



1858

BAKER  
UNIVERSITY

**FACT BOOK  
2005**



**BAKER UNIVERSITY**

# **FACT BOOK**

***2005***

Prepared By

Judith A. Smrha, Ph.D.

Director of Institutional Research and Assessment

The Baker University Fact Book is an annual compilation of University data and serves as a resource to the Baker University community. While the conceptualization and compilation processes necessary to create the exhibits contained within this edition have been carried out by the Office of Institutional Research and its staff, several other University entities have made contributions to the annual report. The Office of Institutional Research would like to thank the following individuals, departments, offices, and schools for their contributions to this edition:

*The Department of Athletics*  
*The Office of the CAS Academic Dean*  
*The Office of Financial Aid*  
*The Office of Human Resources*  
*The Office of the Records and Registration*  
*The Office of Student Development*  
*The Office of Admissions*  
*The School of Professional and Graduate Studies*  
*The School of Nursing*

The information provided in this volume reflects what was available through the end of the CAS Summer II session, or as of close of business on Friday, August 5, 2005.

## TABLE OF CONTENTS

<u>EXHIBIT</u>		<u>PAGE</u>
1	Tuition, Room & Board (CAS)	1
2	Enrollment Report (CAS, BUSN, SPGS)	4
3	Freshman Admissions Statistics (CAS)	11
4	Academic Profiles: Entering Freshman Class (CAS)	14
5	Retention of First-Time Freshmen (CAS)	18
6	Retention of Transfer Students (CAS)	41
7	Annual Cumulative Grade Point Averages (CAS, BUSN, SPGS)	44
8	Distribution of Majors and Degrees (CAS, BUSN, SPGS)	47
9	University Employment Profile (CAS, SPGS)	50
10	Faculty Profile (CAS, BUSN, SPGS)	54
11	Departmental Credit-Hour Production (CAS)	59

## Exhibit 1

### Tuition, Room & Board (CAS)

The following table and figure present CAS tuition, room, and board expenses for each of the past ten academic years, including the current academic year. In addition, the percent increase per year is listed for each expense.

**Table 1**

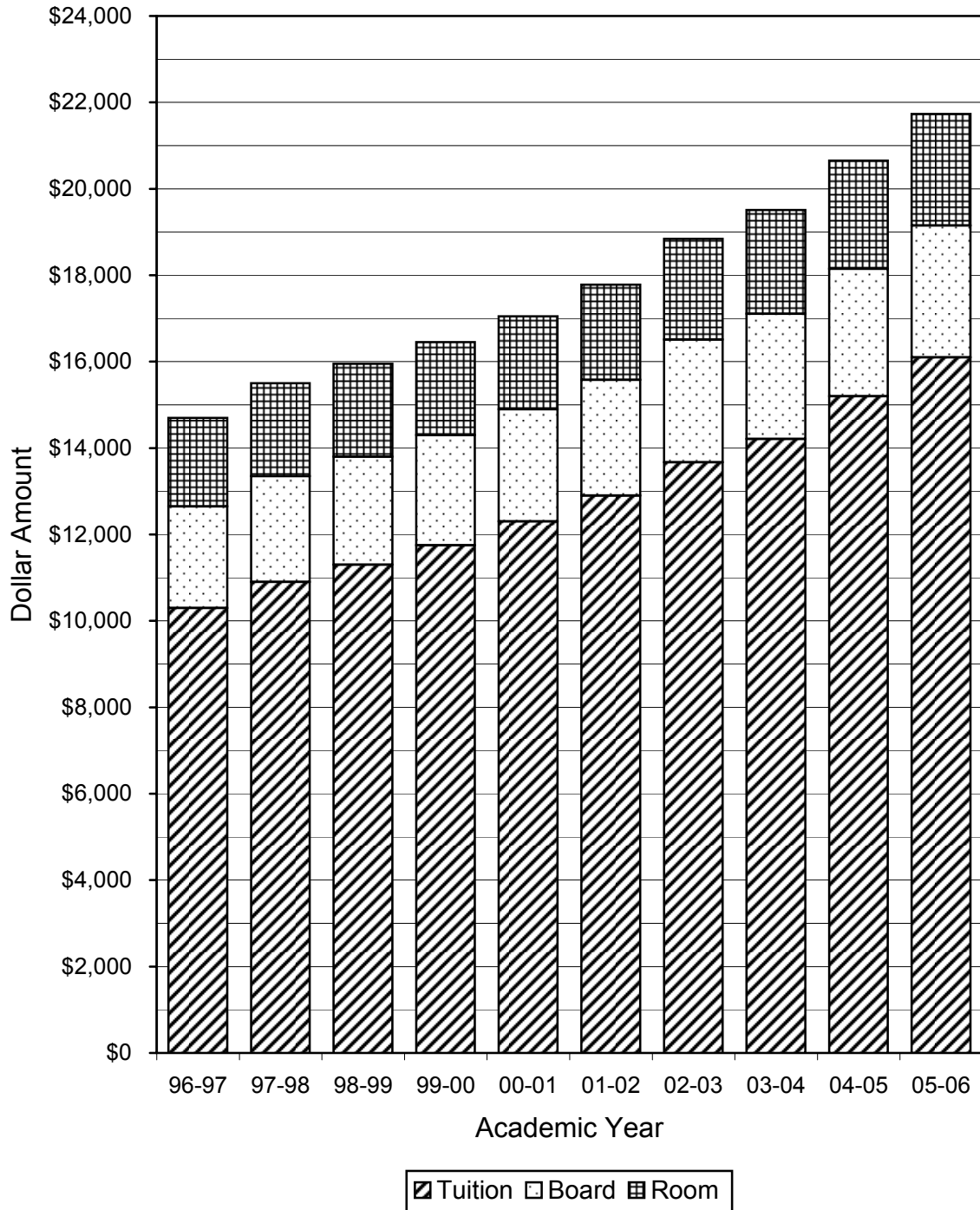
**Tuition, Room, and Board Charges Per Year  
(CAS only)**

Year	Tuition		Traditional Room		Board		Total Expense	
	\$	% Increase	\$	% Increase	\$	% Increase	\$	% Increase
1996-97	10,300	7.3%	2,050	2.5%	2,350	2.2%	14,700	5.8%
1997-98	10,900	5.8%	2,150	4.9%	2,450	4.3%	15,500	5.4%
1998-99	11,300	3.7%	2,150	0.0%	2,500	2.0%	15,950	2.9%
1999-00	11,750	4.0%	2,150	0.0%	2,550	2.0%	16,450	3.1%
2000-01	12,300	4.7%	2,150	0.0%	2,600	2.0%	17,050	3.6%
2001-02	12,900	4.9%	2,200	2.3%	2,680	3.1%	17,780	4.3%
2002-03	13,670	6.0%	2,330	5.9%	2,840	6.0%	18,840	6.0%
2003-04	14,210	4.0%	2,400	3.0%	2,900	2.1%	19,510	3.6%
2004-05	15,200	7.0%	2,500	4.2%	2,950	1.7%	20,650	5.8%
2005-06	16,100	5.9%	2,580	3.2%	3,050	3.4%	21,730	5.2%

Source: Office of Financial Aid

**Figure 1**

**Total Cost of Attending Baker (CAS)  
(Tuition, Board, and Room)**



## Exhibit 2

### Enrollment Report (CAS, SON, SPGS)

The following table and figures (2a through 2d) present the Baker University fall semester enrollment figures for the past ten years. Both head count and student FTE (full-time equivalent) figures are presented for the University as a whole, for the College of Arts and Sciences (CAS), for the School of Nursing (SON), and for the School of Professional and Graduate Studies (SPGS) and its various programs. In addition, faculty FTE figures and student-faculty ratios are presented for each group.

Figure 2e compares the student/faculty ratios for the CAS, SON, SPGS, and the aggregate of all three schools.



**Table 2**  
**BAKER UNIVERSITY**  
**Student Enrollment, Teaching Faculty, and Student/Faculty Ratios**  
**1996-2005 (Reporting Date: 20th Day, Fall Semester)**

Total Baker Enrollment				
Year (Fall)	Head Count	Stud FTE	Fac FTE	St/Fac Ratio
1996:	2008	1770	145.0	12.2
1997:	2010	1754	140.8	12.5
1998:	2405	2086	163.8	12.7
1999:	2659	2236	180.4	12.4
2000:	2817	2366	193.0	12.3
2001:	2919	2491	192.5	12.9
2002:	3013	2529	204.7	12.4
2003:	3061	2594	207.9	12.5
2004:	3145	2619	198.5	13.2
2005:	3261	2747	183.0	15.0

College of Arts and Sciences				
Year (Fall)	Head Count	Stud FTE	Fac FTE	St/Fac Ratio
1996:	798	827	69.5	11.9
1997:	797	822	66.0	12.5
1998:	810	837	68.5	12.2
1999:	763	784	66.9	11.7
2000:	828	842	70.0	12.0
2001:	902	918	71.9	12.8
2002:	886	902	73.2	12.3
2003:	895	904	71.5	12.6
2004:	856	859	73.8	11.6
2005:	916	915	72.7	12.6

School of Nursing				
Year (Fall)	Head Count	Stud FTE	Fac FTE	St/Fac Ratio
1996:	111	114	16.0	7.1
1997:	93	98	13.8	7.1
1998:	75	71	14.3	5.0
1999:	88	82	14.0	5.9
2000:	95	92	14.5	6.3
2001:	100	94	14.5	6.5
2002:	102	94	14.5	6.5
2003:	120	121	15.0	8.1
2004:	132	138	15.5	8.9
2005:	135	137	15.5	8.8

School of Prof & Grad Studies				
Year (Fall)	Head Count	Stud FTE	Fac FTE	St/Fac Ratio
1996:	1099	829	59.5	13.9
1997:	1120	834	61.0	13.7
1998:	1520	1178	81.0	14.5
1999:	1808	1370	99.5	13.8
2000:	1894	1432	108.5	13.2
2001:	1917	1479	106.1	13.9
2002:	2025	1533	117.0	13.1
2003:	2046	1569	121.4	12.9
2004:	2157	1622	109.2	14.9
2005:	2210	1695	94.8	17.9

**Individual SPGS Programs**

Bachelor of Business Admin				
Year (Fall)	Head Count	Stud FTE	Fac FTE	St/Fac Ratio
1996:	199	119	8.3	14.4
1997:	200	120	9.0	13.3
1998:	237	142	12.0	11.8
1999:	262	157	13.5	11.6
2000:	313	188	14.3	13.2
2001:	293	176	12.0	14.7
2002:	281	169	13.5	12.5
2003:	279	167	14.3	11.7
2004:	244	146	10.5	13.9
2005:	225	135	10.5	12.9

Bachelor of Science in Mgmt				
Year (Fall)	Head Count	Stud FTE	Fac FTE	St/Fac Ratio
1996:	122	73	5.3	13.9
1997:	145	88	7.0	12.6
1998:	178	107	8.0	13.4
1999:	187	112	8.3	13.6
2000:	235	141	11.3	12.5
2001:	211	127	10.5	12.1
2002:	218	131	9.8	13.4
2003:	193	116	9.0	12.9
2004:	207	124	9.0	13.8
2005:	217	130	9.0	14.4

Bachelor of Business Information Systems				
Year (Fall)	Head Count	Stud FTE	Fac FTE	St/Fac Ratio
1996:				
1997:				
1998:				
1999:				
2000:				
2001:				
2002:				
2003:				
2004:	26	16	1.5	10.4
2005:	17	10	1.0	10.0

Bridge Programs				
Year (Fall)	Head Count	Stud FTE	Fac FTE	St/Fac Ratio
1996:	209	125	12.0	10.4
1997:	165	99	8.0	12.4
1998:	34	20	2.0	10.0
1999:				
2000:				
2001:				
2002:				
2003:				
2004:				
2005:				

Assoc of Arts in Business				
Year (Fall)	Head Count	Stud FTE	Fac FTE	St/Fac Ratio
1996:				
1997:	72	43	3.0	14.3
1998:	269	161	10.0	16.1
1999:	441	265	21.8	12.2
2000:	429	257	23.3	11.1
2001:	397	238	22.5	10.6
2002:	386	232	23.3	10.0
2003:	375	225	24.0	9.4
2004:	337	202	19.5	10.4
2005:	332	199	20.2	9.9

Master of Bus Admin, EMBA				
Year (Fall)	Head Count	Stud FTE	Fac FTE	St/Fac Ratio
1996:	273	273	17.0	16.1
1997:	268	268	18.0	14.9
1998:	513	513	33.0	15.5
1999:	577	577	40.0	14.4
2000:	526	526	35.0	15.0
2001:	563	563	35.0	16.1
2002:	643	643	28.5	22.6
2003:	650	650	41.0	15.9
2004:	628	628	36.0	17.4
2005:	595	595	24.0	24.8

Master of Science in Mgmt				
Year (Fall)	Head Count	Stud FTE	Fac FTE	St/Fac Ratio
1996:	185	185	11.0	16.8
1997:	154	154	10.0	15.4
1998:	140	140	9.0	15.6
1999:	150	150	10.0	15.0
2000:	141	141	9.0	15.7
2001:	187	187	12.0	15.6
2002:	161	161	7.5	21.5
2003:	114	114	7.0	16.3
2004:	106	106	6.0	17.7
2005:	104	104	5.0	20.8

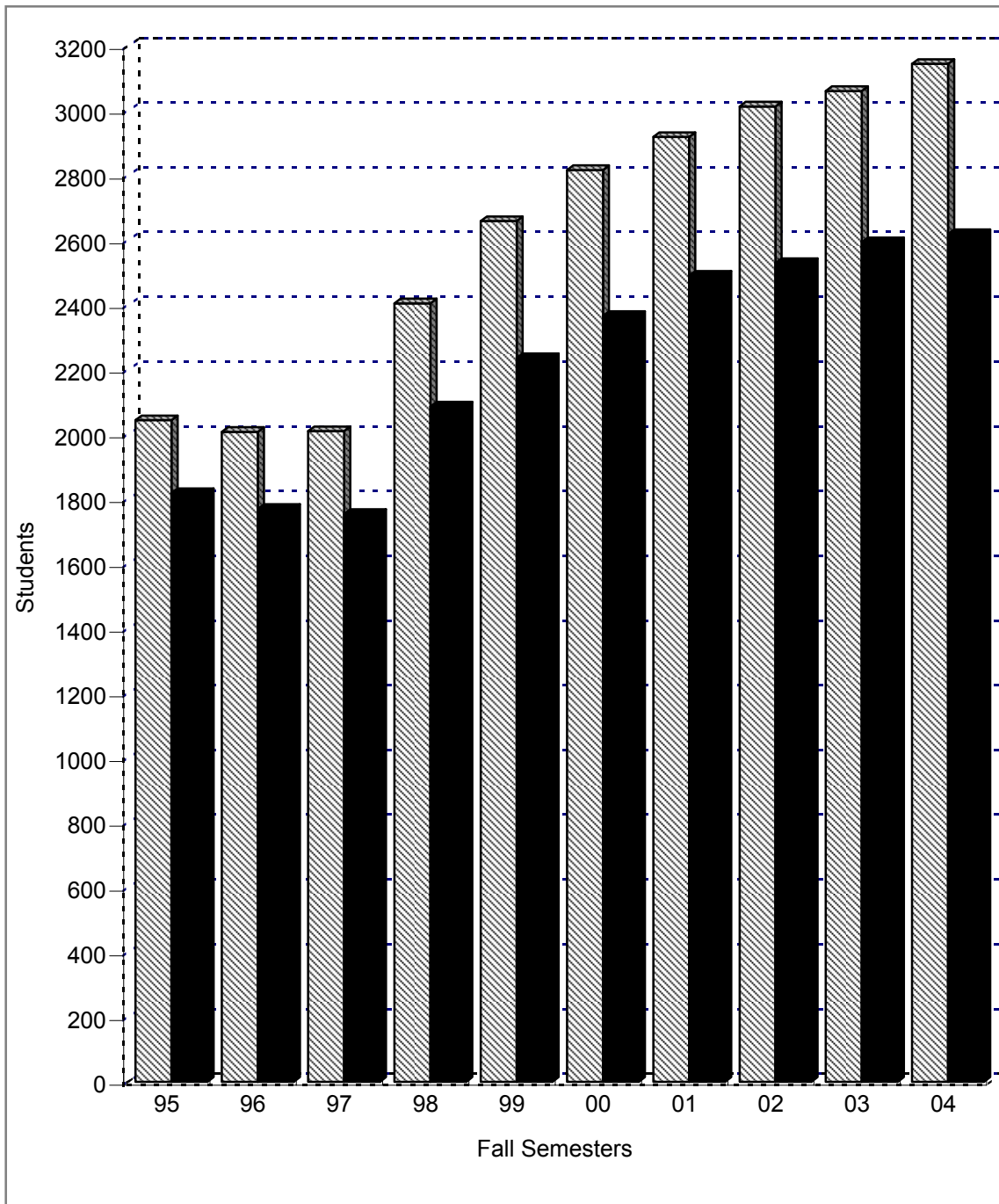
Master of Liberal Arts, Educ, School Leadership				
Year (Fall)	Head Count	Stud FTE	Fac FTE	St/Fac Ratio
1996:	111	54	6.0	9.0
1997:	116	62	6.0	10.3
1998:	149	95	7.0	13.6
1999:	191	109	6.0	18.2
2000:	250	179	15.7	11.4
2001:	266	188	14.1	13.3
2002:	336	198	22.8	8.7
2003:	435	297	27.7	10.7
2004:	609	400	26.7	15.0
2005:	720	522	25.1	20.8

Master of Science in Mgmt				
Year (Fall)	Head Count	Stud FTE	Fac FTE	St/Fac Ratio
1996:				
1997:				
1998:				
1999:				
2000:				
2001:				
2002:				
2003:				
2004:				
2005:				

Sources: Office of the Registrar, BUSN, SPGS

**Figure 2a**

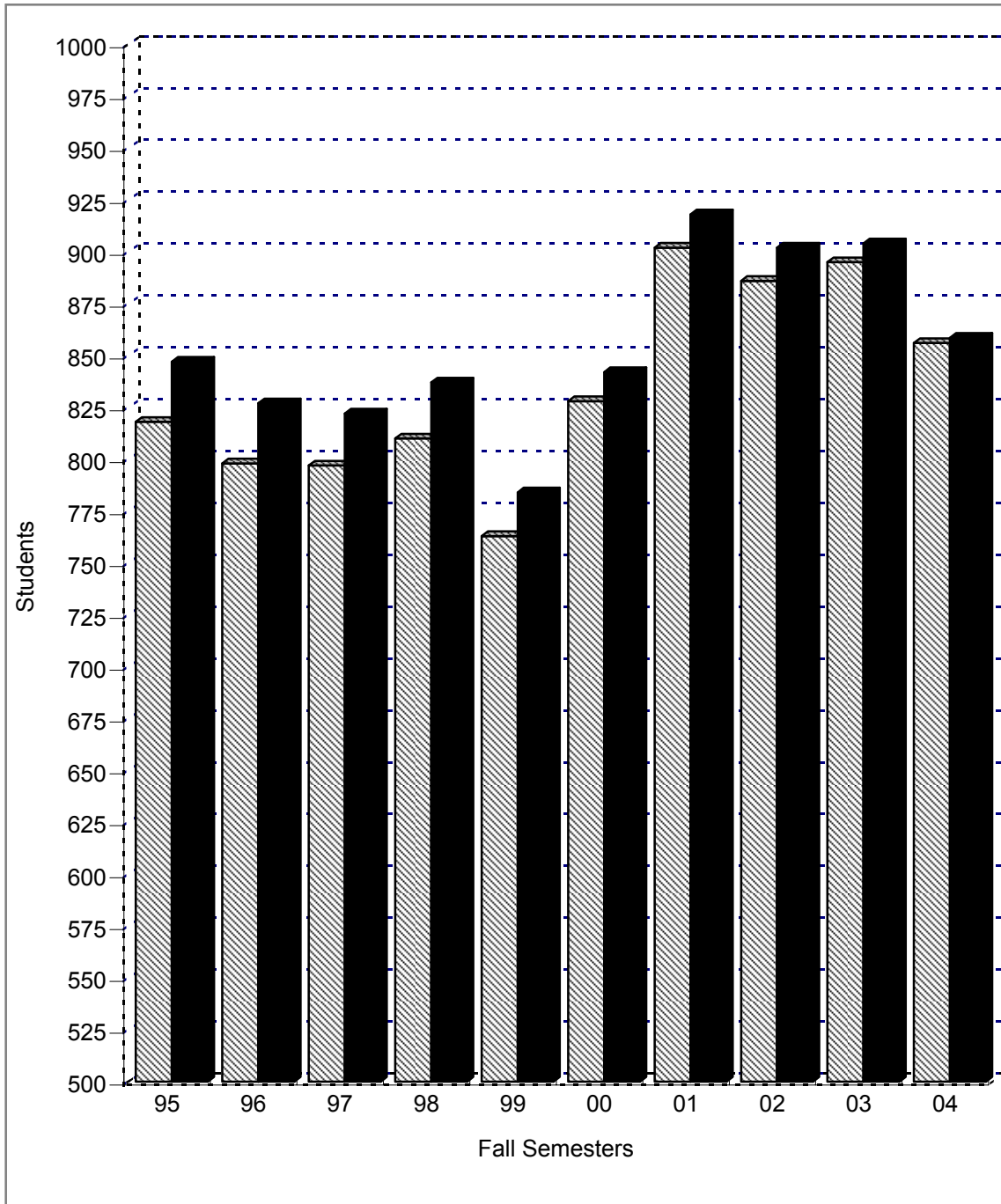
Total Baker University Enrollment  
(CAS, SON, SPGS)



▨ Headcount ■ Stud. FTE

**Figure 2b**

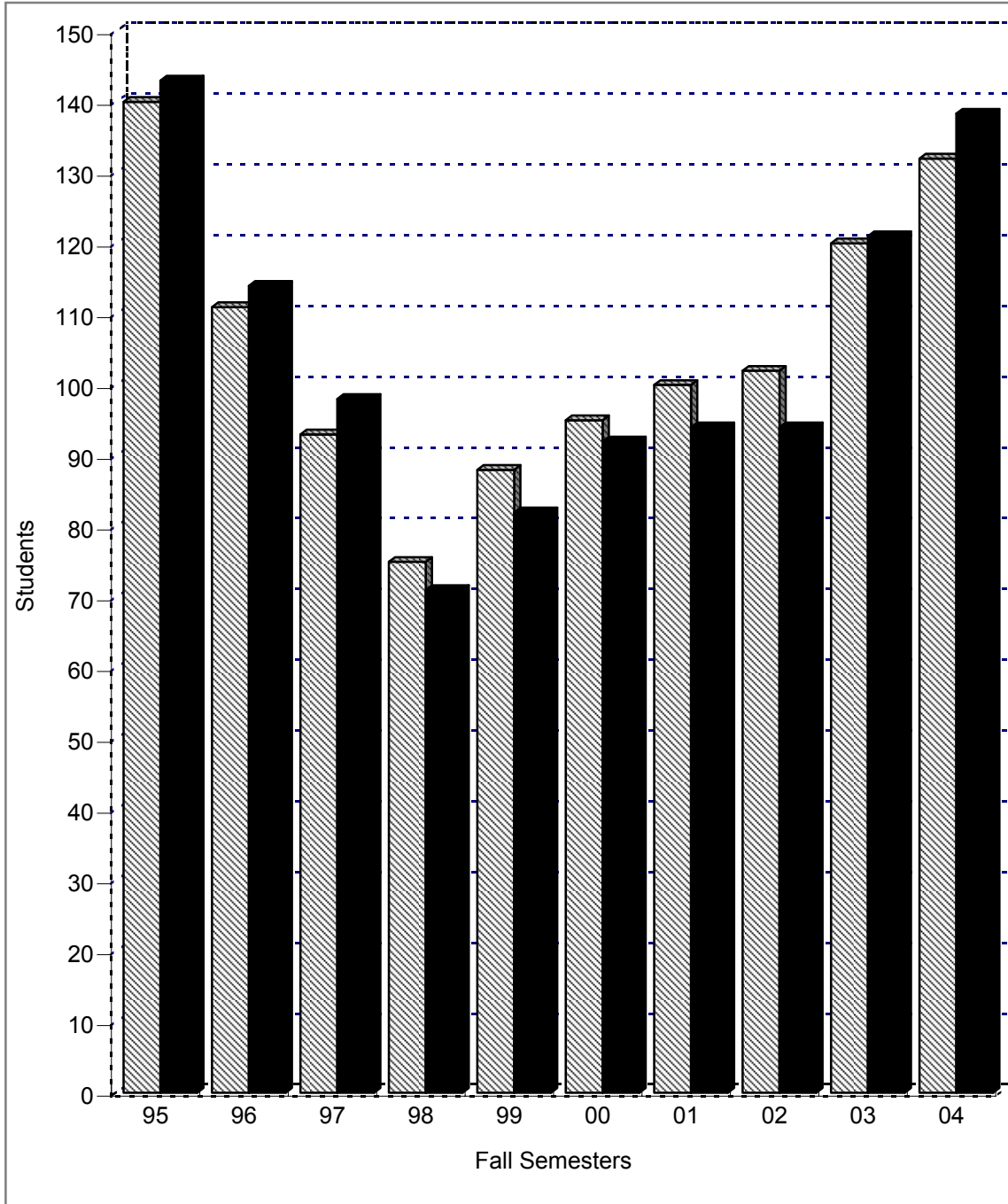
Baker University Enrollment  
College of Arts and Sciences



▨ Headcount ■ Stud. FTE

**Figure 2c**

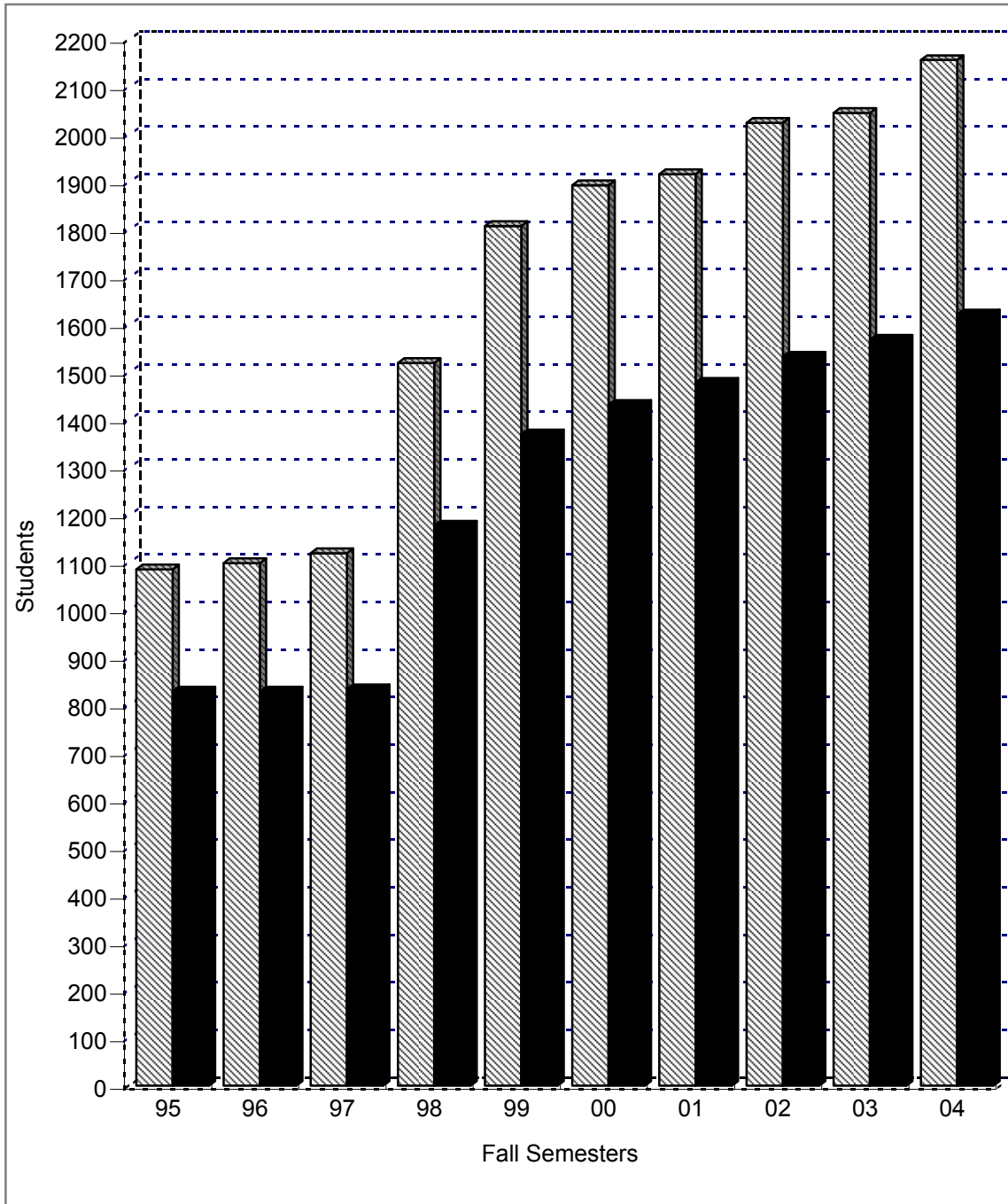
Baker University Enrollment  
School of Nursing



▨ Headcount ■ Stud. FTE

**Figure 2d**

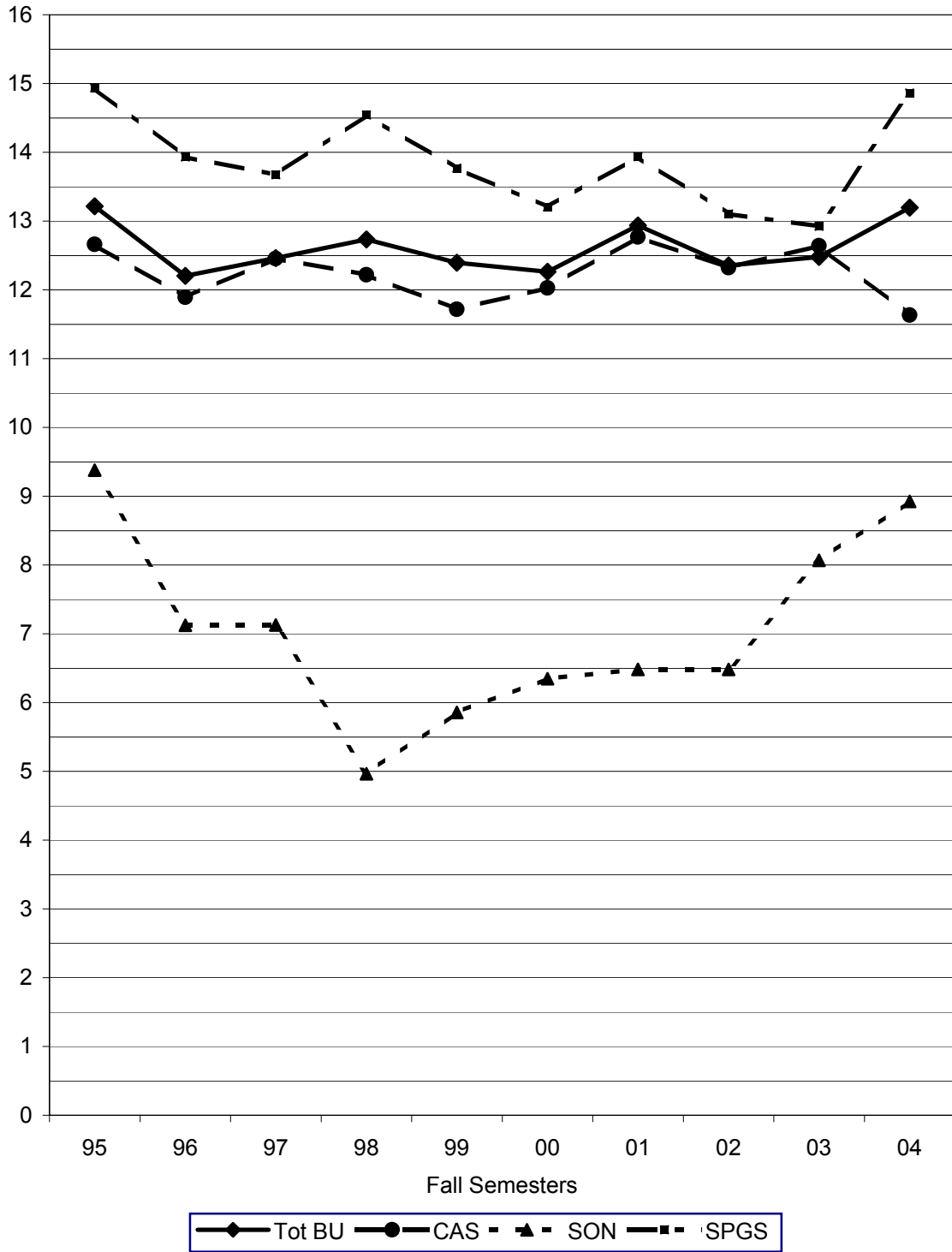
Baker University Enrollment  
School of Prof and Grad Studies



▨ Headcount ■ Stud. FTE

**Figure 2e**

**Baker University  
Student/Faculty Ratios**



## Exhibit 3

### Freshman Admissions Statistics (CAS)

The following table and figure present CAS freshman admissions data for the most recent ten-year period. The number of applicants, number of applicants accepted, and number of applicants enrolled are included. Three sets of conversion rates are also presented in Table 3: 1) the percentage of applicants accepted, 2) the percentage of applicants enrolled, and 3) the percentage of accepted applicants enrolled.

**Table 3**  
**Freshman Admissions Statistics**  
**(CAS only)**

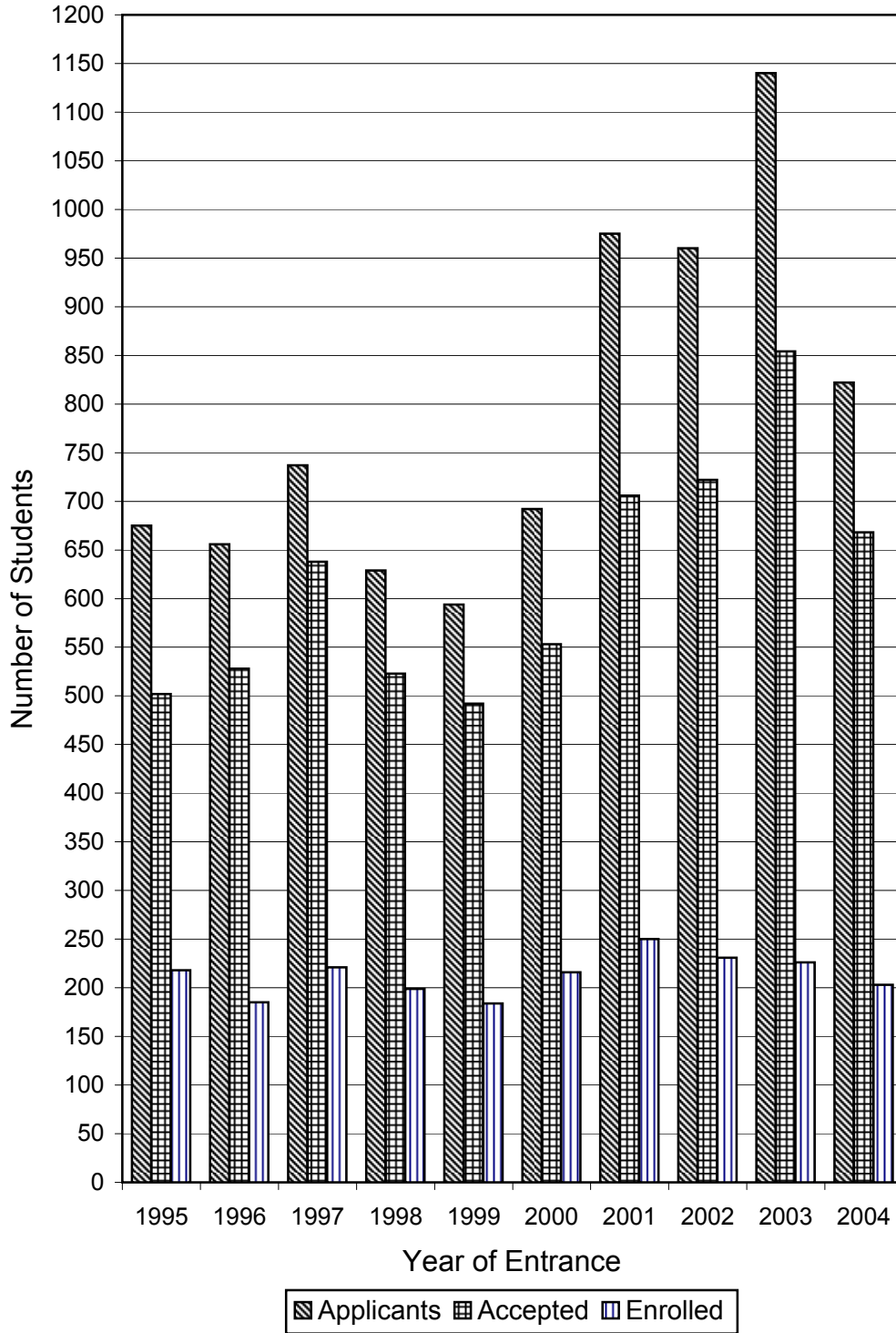
Academic Year	Number of Applicants	Number Accepted	Number Enrolled	Conversion Rates		
				% of Applicants Accepted	% of Applicants Enrolled	% of Accepted Applicants Enrolled
1995-96	675	502	218	74.4%	32.3%	43.4%
1996-97	656	528	185	80.5%	28.2%	35.0%
1997-98	737	638	221	86.6%	30.0%	34.6%
1998-99	629	523	199	83.1%	31.6%	38.0%
1999-00	594	492	184	82.8%	31.0%	37.4%
2000-01	692	553	216	79.9%	31.2%	39.1%
2001-02	975	706	250	72.4%	25.6%	35.4%
2002-03	960	722	231	75.2%	24.1%	32.0%
2003-04	1140	854	226	74.9%	19.8%	26.5%
2004-05	822	668	203	81.3%	24.7%	30.4%

Source: Office of Admissions (CAS)



**Figure 3**

**Freshman Admissions Statistics  
(Number of Applicants, Accepted, Enrolled)**



## Exhibit 4

### Academic Profiles: Entering Freshman Class (CAS)

The following table and figures present summarized academic credentials for each of the last ten classes of entering CAS freshmen. These include mean ACT composite scores and mean high school grade point averages (GPA). Also included for comparison purposes are the annual mean ACT composite scores for all students taking the exam nation-wide.

**Table 4**

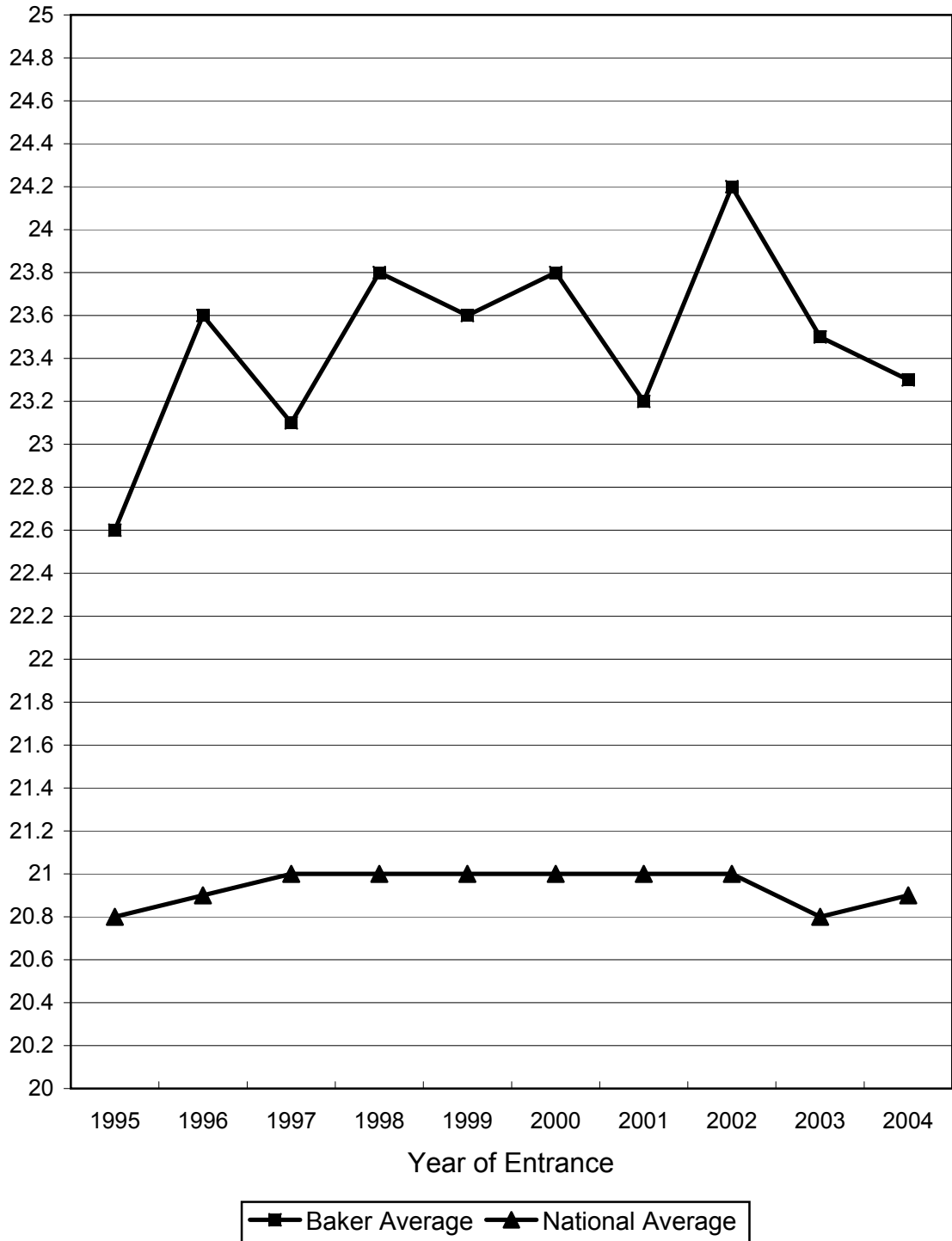
**Academic Profiles: Entering Freshman Class  
(CAS only)**

<b>Entering Class</b>	<b>Number Enrolled</b>	<b>Mean High School GPA</b>	<b>Mean ACT Composite</b>	<b>National ACT Average</b>
1995	218	3.38	22.6	20.8
1996	185	3.38	23.6	20.9
1997	221	3.42	23.1	21.0
1998	199	3.43	23.8	21.0
1999	184	3.49	23.6	21.0
2000	216	3.41	23.8	21.0
2001	258	3.46	23.2	21.0
2002	231	3.45	24.2	21.0
2003	269	3.41	23.5	20.8
2004	203	3.45	23.3	20.9

Sources: Office of Admissions (CAS), ACT

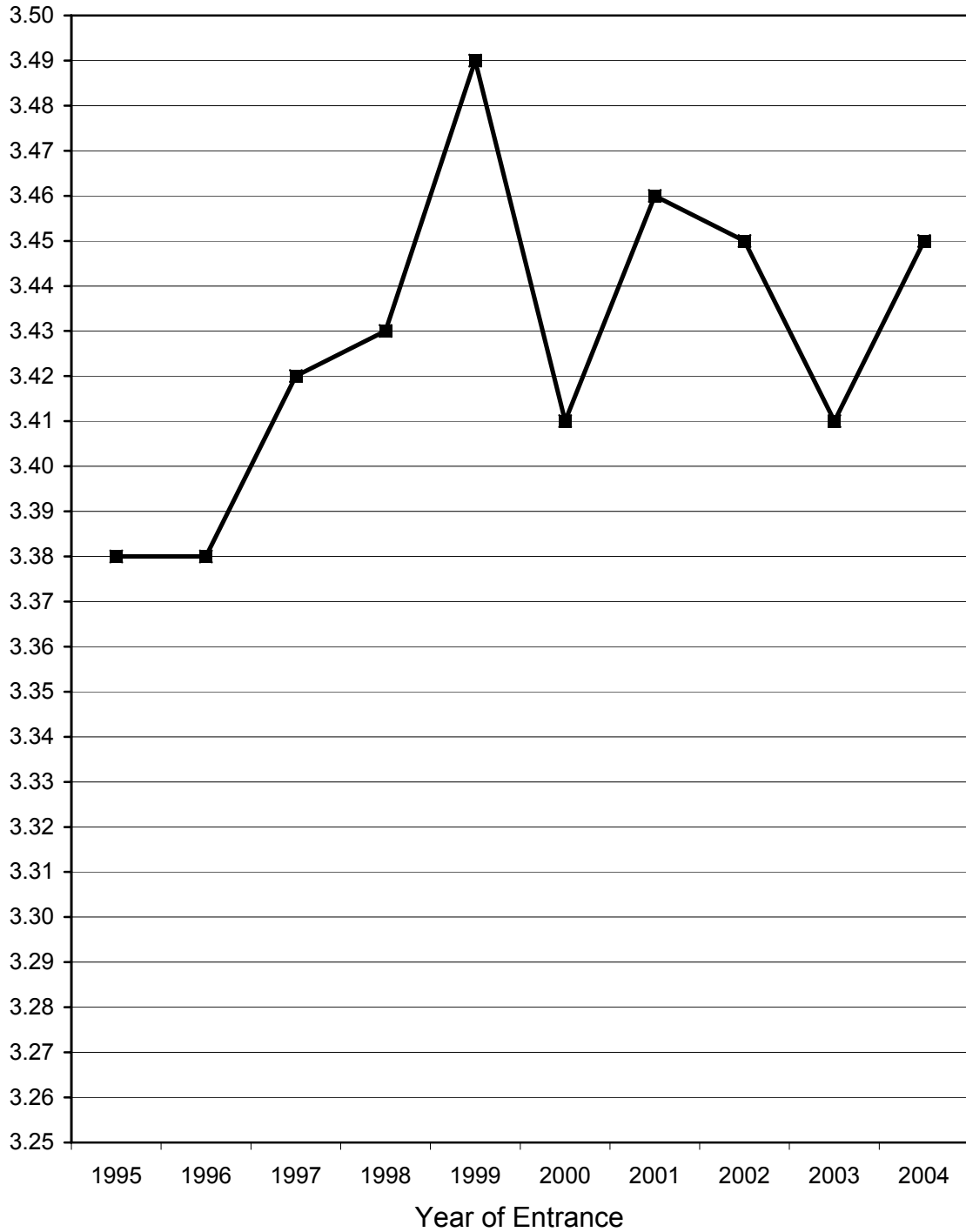
**Figure 4a**

**Entering Freshman Class (CAS)  
Mean ACT Composite Score**



**Figure 4b**

**Entering Freshman Class (CAS)  
Mean High School GPA**



## Exhibit 5

### Retention of First-Time Freshmen (CAS)

The following tables present first-time CAS freshman retention data. In a continuing study since the fall of 1986, first-time freshmen have been tracked in terms of their persistence, as measured by the percentage of students retained, semester by semester, from a given entering freshmen class. In addition, four-year, five-year, and total graduation rates have been determined and are presented. Retention data are presented for all freshmen in each entering class (Table 5a) as well as for the following subgroups: men (Table 5b), women (Table 5c), Greek-affiliated students (Table 5d), non-Greeks (Table 5e), athletes (Table 5f), non-athletes (Table 5g), football players (Table 5h), minority students (Table 5i), major scholarship recipients (Table 5j), and Standards Committee admitted students (borderline admits; Table 5k).

Figures 5a and 5b illustrate selected retention percentages of particular interest. Figure 5a presents semester-by-semester mean retention percentages calculated for all entering classes included in the study. Figure 5b shows freshman-to-sophomore retention percentages by year of entering class. Table 5l summarizes the four-year and five-year graduation rates for all students (and subgroups) for each of the last five years. Figures 5c through 5j illustrate the data on this summary table.

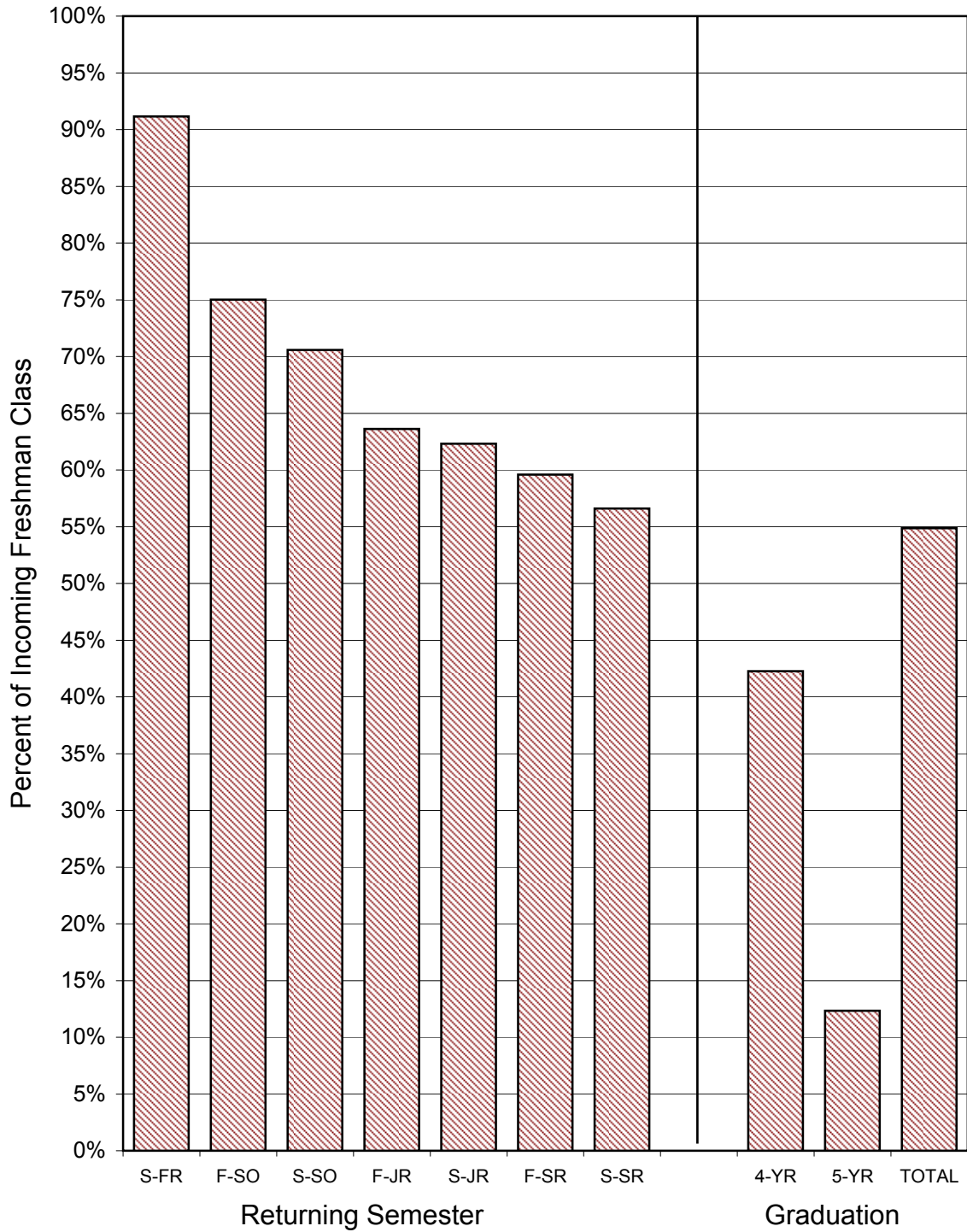
**Table 5a**  
**Retention of First-Time CAS Freshmen**  
**(All Students)**

Entering Class	Entered as Freshman	Returned as...							4-Year Grads	Returned for 5th Year		5-Year Grads	Total Grads	
		1stYr		Sophomore		Junior		Senior		Fall	Spring			
		Fall	Spring	Fall	Spring	Fall	Spring	Fall						Spring
FALL 1986:	243	217 89.3%	177 72.8%	164 67.5%	135 55.6%	135 55.6%	130 53.5%	129 53.1%	102 42.0%	15 6.2%	8 3.3%	16 6.6%	118 48.6%	
FALL 1987:	245	234 95.5%	184 75.1%	173 70.6%	152 62.0%	147 60.0%	136 55.5%	133 54.3%	99 40.4%	29 11.8%	12 4.9%	30 12.2%	129 52.7%	
FALL 1988:	256	234 91.4%	191 74.6%	182 71.1%	154 60.2%	147 57.4%	136 53.1%	133 52.0%	95 37.1%	39 15.2%	23 9.0%	31 12.1%	126 49.2%	
FALL 1989:	230	217 94.3%	164 71.3%	153 66.5%	137 59.6%	130 56.5%	127 55.2%	119 51.7%	98 42.6%	22 9.6%	9 3.9%	23 10.0%	121 52.6%	
FALL 1990:	206	183 88.8%	155 75.2%	139 67.5%	132 64.1%	130 63.1%	127 61.7%	119 57.8%	99 48.1%	18 8.7%	6 2.9%	15 7.3%	114 55.3%	
FALL 1991:	180	162 90.0%	140 77.8%	129 71.7%	127 70.6%	121 67.2%	112 62.2%	107 59.4%	91 50.6%	19 10.6%	4 2.2%	13 7.2%	104 57.8%	
FALL 1992:	198	182 91.9%	160 80.8%	149 75.3%	133 67.2%	134 67.7%	128 64.6%	119 60.1%	89 44.9%	34 17.2%	19 9.6%	24 12.1%	113 57.1%	
FALL 1993:	206	188 91.3%	162 78.6%	154 74.8%	135 65.5%	131 63.6%	122 59.2%	119 57.8%	100 48.5%	20 9.7%	8 3.9%	16 7.8%	116 56.3%	
FALL 1994:	211	189 89.6%	150 71.1%	139 65.9%	123 58.3%	126 59.7%	120 56.9%	109 51.7%	80 37.9%	41 19.4%	19 9.0%	34 16.1%	114 54.0%	
FALL 1995:	218	200 91.7%	171 78.4%	165 75.7%	151 69.3%	146 67.0%	141 64.7%	132 60.6%	100 45.9%	41 18.8%	17 7.8%	35 16.1%	135 61.9%	
FALL 1996:	185	165 89.2%	130 70.3%	125 67.6%	115 62.2%	115 62.2%	107 57.8%	105 56.8%	81 43.8%	26 14.1%	14 7.6%	19 10.3%	100 54.1%	
FALL 1997:	221	203 91.9%	153 69.2%	150 67.9%	136 61.5%	133 60.2%	130 58.8%	125 56.6%	89 40.3%	37 16.7%	15 6.8%	33 14.9%	122 55.2%	
FALL 1998:	199	182 91.5%	145 72.9%	139 69.8%	125 62.8%	120 60.3%	120 60.3%	110 55.3%	69 34.7%	41 20.6%	16 8.0%	34 17.1%	103 51.8%	
FALL 1999:	184	176 95.7%	149 81.0%	142 77.2%	129 70.1%	126 68.5%	120 65.2%	112 60.9%	72 39.1%	43 23.4%	20 10.9%	36 19.6%	108 58.7%	
FALL 2000:	216	201 93.1%	176 81.5%	171 79.2%	150 69.4%	145 67.1%	141 65.3%	134 62.0%	91 42.1%	44 20.4%	25 11.6%	34 15.7%	125 57.9%	
FALL 2001:	250	221 88.4%	181 72.4%	172 68.8%	158 63.2%	157 62.8%	148 59.2%	139 55.6%	96 38.4%	47 18.8%				
FALL 2002:	231	205 88.7%	172 74.5%	160 69.3%	147 63.6%	140 60.6%	138 59.7%							
FALL 2003:	225	199 88.4%	151 67.1%	145 64.4%	135 60.0%									
FALL 2004:	203	185 91.1%	164 80.8%											
FALL 2005:	239													
<b>AVERAGE:</b>		<b>91.1%</b>	<b>75.0%</b>	<b>70.6%</b>	<b>63.6%</b>	<b>62.3%</b>	<b>59.6%</b>	<b>56.6%</b>	<b>42.3%</b>	<b>15.1%</b>	<b>6.8%</b>	<b>12.3%</b>	<b>54.9%</b>	

Source: Office of Institutional Research

**Figure 5a**

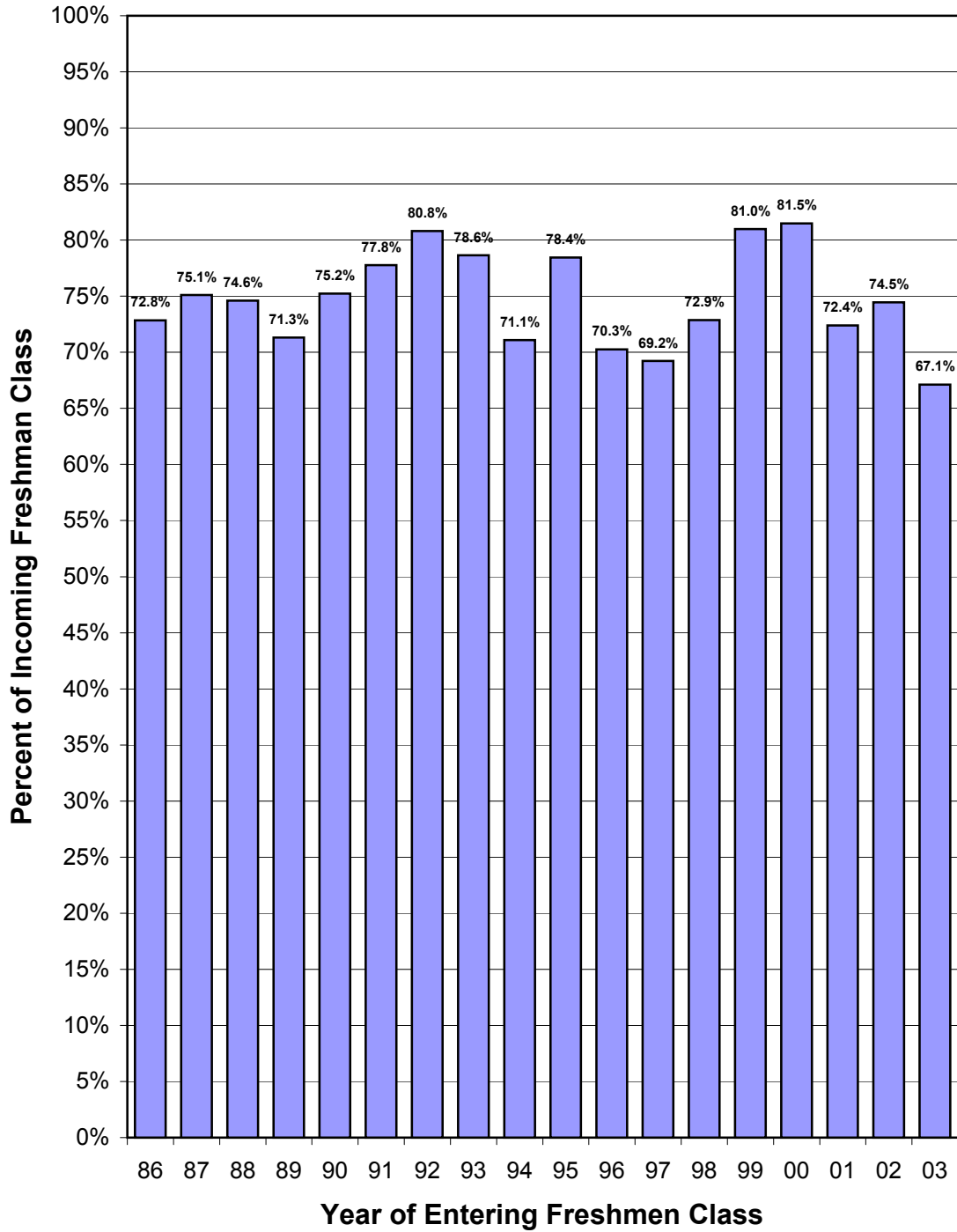
**Semester by Semester Retention (CAS)  
Mean Percentages (1986-2004)**





**Figure 5b**

**Freshman to Sophomore Retention  
(CAS 1986-2003)**



**Table 5b**  
**Retention of First-Time CAS Freshmen**  
**(Men)**

Entering Class	Entered as Freshman Fall	Returned as...							4-Year Grads	Returned for		5-Year Grads	Total Grads	
		1stYr		Sophomore		Junior		Senior		5th Year				
		Spring	Fall	Spring	Fall	Spring	Fall	Spring		Fall	Spring			Fall
FALL 1986:	131	116 88.5%	95 72.5%	86 65.6%	70 53.4%	70 53.4%	66 50.4%	65 49.6%	46 35.1%	11 8.4%	5 3.8%	12 9.2%	58 44.3%	
FALL 1987:	116	110 94.8%	89 76.7%	83 71.6%	77 66.4%	75 64.7%	73 62.9%	72 62.1%	46 39.7%	21 18.1%	10 8.6%	22 19.0%	68 58.6%	
FALL 1988:	107	93 86.9%	81 75.7%	76 71.0%	65 60.7%	62 57.9%	55 51.4%	56 52.3%	36 33.6%	20 18.7%	11 10.3%	15 14.0%	51 47.7%	
FALL 1989:	107	102 95.3%	69 64.5%	63 58.9%	56 52.3%	55 51.4%	56 52.3%	55 51.4%	39 36.4%	12 11.2%	5 4.7%	13 12.1%	52 48.6%	
FALL 1990:	92	82 89.1%	65 70.7%	52 56.5%	50 54.3%	46 50.0%	47 51.1%	45 48.9%	34 37.0%	9 9.8%	2 2.2%	8 8.7%	42 45.7%	
FALL 1991:	87	83 95.4%	71 81.6%	59 67.8%	57 65.5%	56 64.4%	52 59.8%	50 57.5%	38 43.7%	14 16.1%	4 4.6%	10 11.5%	48 55.2%	
FALL 1992:	91	83 91.2%	72 79.1%	67 73.6%	58 63.7%	59 64.8%	58 63.7%	56 61.5%	32 35.2%	23 25.3%	13 14.3%	17 18.7%	49 53.8%	
FALL 1993:	80	71 88.8%	62 77.5%	56 70.0%	44 55.0%	42 52.5%	36 45.0%	36 45.0%	32 40.0%	5 6.3%	1 1.3%	3 3.8%	35 43.8%	
FALL 1994:	84	76 90.5%	59 70.2%	60 71.4%	56 66.7%	56 66.7%	52 61.9%	50 59.5%	36 42.9%	17 20.2%	13 15.5%	15 17.9%	51 60.7%	
FALL 1995:	100	89 89.0%	74 74.0%	75 75.0%	67 67.0%	63 63.0%	60 60.0%	61 61.0%	41 41.0%	19 19.0%	8 8.0%	15 15.0%	56 56.0%	
FALL 1996:	95	81 85.3%	58 61.1%	54 56.8%	48 50.5%	49 51.6%	45 47.4%	45 47.4%	29 30.5%	14 14.7%	9 9.5%	11 11.6%	40 42.1%	
FALL 1997:	105	93 88.6%	60 57.1%	59 56.2%	57 54.3%	57 54.3%	56 53.3%	55 52.4%	32 30.5%	21 20.0%	8 7.6%	17 16.2%	49 46.7%	
FALL 1998:	89	82 92.1%	64 71.9%	63 70.8%	58 65.2%	56 62.9%	56 62.9%	52 58.4%	23 25.8%	29 32.6%	14 15.7%	22 24.7%	45 50.6%	
FALL 1999:	81	76 93.8%	59 72.8%	59 72.8%	50 61.7%	50 61.7%	49 60.5%	48 59.3%	19 23.5%	28 34.6%	15 18.5%	22 27.2%	41 50.6%	
FALL 2000:	102	96 94.1%	80 78.4%	78 76.5%	70 68.6%	69 67.6%	65 63.7%	63 61.8%	42 41.2%	22 21.6%	14 13.7%	14 13.7%	56 54.9%	
FALL 2001:	102	87 85.3%	68 66.7%	64 62.7%	61 59.8%	60 58.8%	55 53.9%	53 52.0%	32 31.4%					
FALL 2002:	94	80 85.1%	67 71.3%	60 63.8%	55 58.5%	51 54.3%								
FALL 2003:	117	101 86.3%	77 65.8%	73 62.4%										
FALL 2004:	86	76 88.4%												
<b>AVERAGE:</b>		<b>89.9%</b>	<b>71.5%</b>	<b>66.9%</b>	<b>60.2%</b>	<b>58.8%</b>	<b>56.3%</b>	<b>55.0%</b>	<b>35.5%</b>	<b>18.4%</b>	<b>9.2%</b>	<b>14.9%</b>	<b>50.6%</b>	

Source: Office of Institutional Research

**Table 5c**  
**Retention of First-Time CAS Freshmen**  
**(Women)**

Entering Class	Entered as Freshman Fall	Returned as...							4-Year Grads	Returned for		5-Year Grads	Total Grads	
		1stYr		Sophomore		Junior		Senior		5th Year				
		Spring	Fall	Spring	Fall	Spring	Fall	Spring		Fall	Spring			Fall
FALL 1986:	112	101 90.2%	82 73.2%	78 69.6%	65 58.0%	65 58.0%	64 57.1%	64 57.1%	56 50.0%	4 3.6%	3 2.7%	4 3.6%	60 53.6%	
FALL 1987:	129	124 96.1%	95 73.6%	90 69.8%	75 58.1%	72 55.8%	63 48.8%	61 47.3%	53 41.1%	8 6.2%	2 1.6%	8 6.2%	61 47.3%	
FALL 1988:	149	141 94.6%	110 73.8%	106 71.1%	89 59.7%	85 57.0%	81 54.4%	77 51.7%	59 39.6%	19 12.8%	12 8.1%	16 10.7%	75 50.3%	
FALL 1989:	123	115 93.5%	95 77.2%	90 73.2%	81 65.9%	75 61.0%	71 57.7%	64 52.0%	59 48.0%	10 8.1%	4 3.3%	10 8.1%	69 56.1%	
FALL 1990:	114	101 88.6%	90 78.9%	87 76.3%	82 71.9%	84 73.7%	80 70.2%	74 64.9%	65 57.0%	9 7.9%	4 3.5%	9 7.9%	74 64.9%	
FALL 1991:	93	79 84.9%	69 74.2%	70 75.3%	70 75.3%	65 69.9%	60 64.5%	57 61.3%	53 57.0%	5 5.4%	0 0.0%	3 3.2%	56 60.2%	
FALL 1992:	107	99 92.5%	89 83.2%	82 76.6%	75 70.1%	75 70.1%	75 70.1%	63 58.9%	57 53.3%	11 10.3%	6 5.6%	7 6.5%	64 59.8%	
FALL 1993:	126	117 92.9%	100 79.4%	98 77.8%	91 72.2%	89 70.6%	86 68.3%	83 65.9%	68 54.0%	15 11.9%	7 5.6%	13 10.3%	81 64.3%	
FALL 1994:	127	113 89.0%	91 71.7%	79 62.2%	67 52.8%	70 55.1%	68 53.5%	59 46.5%	44 34.6%	24 18.9%	6 4.7%	19 15.0%	63 49.6%	
FALL 1995:	118	111 94.1%	97 82.2%	90 76.3%	84 71.2%	83 70.3%	81 68.6%	71 60.2%	59 50.0%	22 18.6%	9 7.6%	20 16.9%	79 66.9%	
FALL 1996:	90	84 93.3%	72 80.0%	71 78.9%	67 74.4%	66 73.3%	62 68.9%	60 66.7%	52 57.8%	12 13.3%	5 5.6%	8 8.9%	60 66.7%	
FALL 1997:	116	110 94.8%	93 80.2%	91 78.4%	79 68.1%	76 65.5%	74 63.8%	70 60.3%	57 49.1%	16 13.8%	7 6.0%	16 13.8%	73 62.9%	
FALL 1998:	110	100 90.9%	81 73.6%	76 69.1%	67 60.9%	64 58.2%	64 58.2%	58 52.7%	46 41.8%	12 10.9%	2 1.8%	12 10.9%	58 52.7%	
FALL 1999:	103	100 97.1%	90 87.4%	83 80.6%	79 76.7%	76 73.8%	71 68.9%	64 62.1%	53 51.5%	15 14.6%	5 4.9%	14 13.6%	67 65.0%	
FALL 2000:	114	105 92.1%	96 84.2%	93 81.6%	80 70.2%	76 66.7%	76 66.7%	71 62.3%	49 43.0%	22 19.3%	11 9.6%	20 17.5%	69 60.5%	
FALL 2001:	148	134 90.5%	113 76.4%	108 73.0%	97 65.5%	97 65.5%	93 62.8%	86 58.1%	64 43.2%					
FALL 2002:	137	125 91.2%	105 76.6%	100 73.0%	92 67.2%	89 65.0%								
FALL 2003:	108	98 90.7%	74 68.5%	72 66.7%										
FALL 2004:	117	109 93.2%												
<b>AVERAGE:</b>		<b>92.1%</b>	<b>77.5%</b>	<b>73.9%</b>	<b>67.0%</b>	<b>65.3%</b>	<b>62.7%</b>	<b>58.0%</b>	<b>48.2%</b>	<b>11.7%</b>	<b>4.7%</b>	<b>10.2%</b>	<b>58.7%</b>	

Source: Office of Institutional Research

**Table 5d**  
**Retention of First-Time CAS Freshmen**  
**(Greek Affiliation)**

Entering Class	Entered as Freshman Fall	Returned as...							4-Year Grads	Returned for 5th Year		5-Year Grads	Total Grads	
		1stYr		Sophomore		Junior		Senior		Fall	Spring			
		Spring	Fall	Spring	Fall	Spring	Fall	Spring						
FALL 1986:	131	122 93.1%	103 78.6%	95 72.5%	80 61.1%	80 61.1%	78 59.5%	77 58.8%	65 49.6%	7 5.3%	3 2.3%	8 6.1%	73 55.7%	
FALL 1987:	121	121 100.0%	106 87.6%	102 84.3%	94 77.7%	92 76.0%	86 71.1%	86 71.1%	67 55.4%	17 14.0%	7 5.8%	17 14.0%	84 69.4%	
FALL 1988:	139	136 97.8%	115 82.7%	111 79.9%	100 71.9%	94 67.6%	91 65.5%	90 64.7%	67 48.2%	25 18.0%	15 10.8%	19 13.7%	86 61.9%	
FALL 1989:	154	148 96.1%	120 77.9%	114 74.0%	105 68.2%	104 67.5%	101 65.6%	96 62.3%	83 53.9%	17 11.0%	5 3.2%	18 11.7%	101 65.6%	
FALL 1990:	126	118 93.7%	92 73.0%	88 69.8%	87 69.0%	91 72.2%	89 70.6%	83 65.9%	73 57.9%	8 6.3%	3 2.4%	8 6.3%	81 64.3%	
FALL 1991:	121	114 94.2%	101 83.5%	98 81.0%	95 78.5%	91 75.2%	86 71.1%	84 69.4%	73 60.3%	14 11.6%	3 2.5%	10 8.3%	83 68.6%	
FALL 1992:	137	132 96.4%	119 86.9%	108 78.8%	98 71.5%	100 73.0%	97 70.8%	91 66.4%	67 48.9%	28 20.4%	18 13.1%	19 13.9%	86 62.8%	
FALL 1993:	136	130 95.6%	114 83.8%	111 81.6%	96 70.6%	93 68.4%	88 64.7%	85 62.5%	68 50.0%	17 12.5%	7 5.1%	14 10.3%	82 60.3%	
FALL 1994:	113	103 91.2%	84 74.3%	80 70.8%	72 63.7%	74 65.5%	71 62.8%	67 59.3%	47 41.6%	25 22.1%	13 11.5%	20 17.7%	67 59.3%	
FALL 1995:	122	117 95.9%	107 87.7%	103 84.4%	94 77.0%	93 76.2%	92 75.4%	86 70.5%	65 53.3%	24 19.7%	9 7.4%	21 17.2%	86 70.5%	
FALL 1996:	112	107 95.5%	86 76.8%	82 73.2%	75 67.0%	75 67.0%	69 61.6%	68 60.7%	56 50.0%	14 12.5%	9 8.0%	10 8.9%	66 58.9%	
FALL 1997:	117	109 93.2%	89 76.1%	87 74.4%	79 67.5%	76 65.0%	77 65.8%	74 63.2%	54 46.2%	18 15.4%	10 8.5%	16 13.7%	70 59.8%	
FALL 1998:	104	101 97.1%	82 78.8%	79 76.0%	70 67.3%	67 64.4%	68 65.4%	65 62.5%	45 43.3%	20 19.2%	9 8.7%	14 13.5%	59 56.7%	
FALL 1999:	108	108 100.0%	98 90.7%	94 87.0%	88 81.5%	87 80.6%	85 78.7%	79 73.1%	51 47.2%	29 26.9%	16 14.8%	24 22.2%	75 69.4%	
FALL 2000:	135	127 94.1%	113 83.7%	113 83.7%	96 71.1%	92 68.1%	88 65.2%	83 61.5%	53 39.3%	31 23.0%	19 14.1%	23 17.0%	76 56.3%	
FALL 2001:	121	107 88.4%	87 71.9%	83 68.6%	79 65.3%	78 64.5%	76 62.8%	74 61.2%	51 42.1%					
FALL 2002:	122	111 91.0%	97 79.5%	93 76.2%	90 73.8%	87 71.3%								
FALL 2003:	91	89 97.8%	79 86.8%	75 82.4%										
FALL 2004:	105	99 94.3%												
<b>AVERAGE:</b>		<b>95.0%</b>	<b>81.1%</b>	<b>77.7%</b>	<b>70.8%</b>	<b>69.6%</b>	<b>67.3%</b>	<b>64.6%</b>	<b>49.2%</b>	<b>15.9%</b>	<b>7.9%</b>	<b>13.0%</b>	<b>62.6%</b>	

Source: Office of Institutional Research

**Table 5e**  
**Retention of First-Time CAS Freshmen**  
**(No Greek Affiliation)**

Entering Class	Entered as Freshman Fall	Returned as...							4-Year Grads	Returned for		5-Year Grads	Total Grads	
		1stYr		Sophomore		Junior		Senior		5th Year				
		Spring	Fall	Spring	Fall	Spring	Fall	Spring		Fall	Spring			Fall
FALL 1986:	112	95 84.8%	74 66.1%	69 61.6%	55 49.1%	55 49.1%	52 46.4%	52 46.4%	37 33.0%	8 7.1%	5 4.5%	8 7.1%	45 40.2%	
FALL 1987:	124	113 91.1%	78 62.9%	71 57.3%	58 46.8%	55 44.4%	50 40.3%	47 37.9%	32 25.8%	12 9.7%	5 4.0%	13 10.5%	45 36.3%	
FALL 1988:	117	98 83.8%	76 65.0%	71 60.7%	54 46.2%	53 45.3%	45 38.5%	43 36.8%	28 23.9%	14 12.0%	8 6.8%	12 10.3%	40 34.2%	
FALL 1989:	76	69 90.8%	44 57.9%	39 51.3%	32 42.1%	26 34.2%	26 34.2%	23 30.3%	15 19.7%	5 6.6%	4 5.3%	5 6.6%	20 26.3%	
FALL 1990:	80	65 81.3%	63 78.8%	51 63.8%	45 56.3%	39 48.8%	38 47.5%	36 45.0%	26 32.5%	10 12.5%	3 3.8%	9 11.3%	35 43.8%	
FALL 1991:	59	48 81.4%	39 66.1%	31 52.5%	32 54.2%	30 50.8%	26 44.1%	23 39.0%	18 30.5%	5 8.5%	1 1.7%	3 5.1%	21 35.6%	
FALL 1992:	61	50 82.0%	41 67.2%	41 67.2%	35 57.4%	35 57.4%	31 50.8%	28 45.9%	22 36.1%	6 9.8%	1 1.6%	5 8.2%	27 44.3%	
FALL 1993:	70	58 82.9%	48 68.6%	43 61.4%	39 55.7%	38 54.3%	34 48.6%	34 48.6%	32 45.7%	3 4.3%	1 1.4%	2 2.9%	34 48.6%	
FALL 1994:	98	86 87.8%	66 67.3%	59 60.2%	51 52.0%	52 53.1%	49 50.0%	42 42.9%	35 35.7%	15 15.3%	6 6.1%	13 13.3%	48 49.0%	
FALL 1995:	96	83 86.5%	64 66.7%	62 64.6%	57 59.4%	53 55.2%	49 51.0%	46 47.9%	35 36.5%	17 17.7%	8 8.3%	14 14.6%	49 51.0%	
FALL 1996:	73	58 79.5%	44 60.3%	43 58.9%	40 54.8%	40 54.8%	38 52.1%	37 50.7%	25 34.2%	12 16.4%	5 6.8%	9 12.3%	34 46.6%	
FALL 1997:	104	94 90.4%	64 61.5%	63 60.6%	57 54.8%	57 54.8%	53 51.0%	51 49.0%	35 33.7%	19 18.3%	5 4.8%	17 16.3%	52 50.0%	
FALL 1998:	95	81 85.3%	63 66.3%	61 64.2%	55 57.9%	53 55.8%	52 54.7%	45 47.4%	24 25.3%	21 22.1%	7 7.4%	20 21.1%	44 46.3%	
FALL 1999:	76	68 89.5%	51 67.1%	48 63.2%	41 53.9%	39 51.3%	35 46.1%	33 43.4%	21 27.6%	14 18.4%	4 5.3%	12 15.8%	33 43.4%	
FALL 2000:	81	74 91.4%	63 77.8%	58 71.6%	54 66.7%	53 65.4%	53 65.4%	49 60.5%	38 46.9%	13 16.0%	6 7.4%	11 13.6%	49 60.5%	
FALL 2001:	129	114 88.4%	94 72.9%	89 69.0%	79 61.2%	79 61.2%	72 55.8%	65 50.4%	45 34.9%					
FALL 2002:	109	94 86.2%	75 68.8%	67 61.5%	57 52.3%	53 48.6%								
FALL 2003:	134	110 82.1%	72 53.7%	70 52.2%										
FALL 2004:	98	86 87.8%												
<b>AVERAGE:</b>		<b>85.9%</b>	<b>66.4%</b>	<b>61.2%</b>	<b>54.2%</b>	<b>52.0%</b>	<b>48.5%</b>	<b>45.1%</b>	<b>32.6%</b>	<b>13.0%</b>	<b>5.0%</b>	<b>11.3%</b>	<b>43.7%</b>	

Source: Office of Institutional Research

**Table 5f**  
**Retention of First-Time CAS Freshmen**  
**(Athletes)**

Entering Class	Entered as Freshman	Returned as...							4-Year Grads	Returned for 5th Year		5-Year Grads	Total Grads	
		1stYr		Sophomore		Junior		Senior		Fall	Spring			
		Fall	Spring	Fall	Spring	Fall	Spring	Fall						Spring
FALL 1992:	77	75 97.4%	66 85.7%	61 79.2%	56 72.7%	57 74.0%	55 71.4%	52 67.5%	33 42.9%	20 26.0%	11 14.3%	16 20.8%	49 63.6%	
FALL 1993:	62	57 91.9%	52 83.9%	49 79.0%	43 69.4%	42 67.7%	40 64.5%	40 64.5%	32 51.6%	7 11.3%	1 1.6%	4 6.5%	36 58.1%	
FALL 1994:	83	75 90.4%	59 71.1%	56 67.5%	48 57.8%	50 60.2%	48 57.8%	44 53.0%	30 36.1%	15 18.1%	9 10.8%	12 14.5%	42 50.6%	
FALL 1995:	104	97 93.3%	80 76.9%	77 74.0%	69 66.3%	67 64.4%	67 64.4%	64 61.5%	46 44.2%	18 17.3%	5 4.8%	14 13.5%	60 57.7%	
FALL 1996:	81	72 88.9%	53 65.4%	51 63.0%	46 56.8%	47 58.0%	43 53.1%	41 50.6%	29 35.8%	15 18.5%	8 9.9%	13 16.0%	42 51.9%	
FALL 1997:	111	99 89.2%	64 57.7%	64 57.7%	58 52.3%	56 50.5%	54 48.6%	51 45.9%	33 29.7%	19 17.1%	8 7.2%	16 14.4%	49 44.1%	
FALL 1998:	98	90 91.8%	72 73.5%	69 70.4%	65 66.3%	62 63.3%	63 64.3%	60 61.2%	33 33.7%	27 27.6%	11 11.2%	21 21.4%	54 55.1%	
FALL 1999:	79	76 96.2%	62 78.5%	60 75.9%	53 67.1%	53 67.1%	52 65.8%	51 64.6%	31 39.2%	20 25.3%	9 11.4%	19 24.1%	50 63.3%	
FALL 2000:	85	77 90.6%	69 81.2%	69 81.2%	62 72.9%	59 69.4%	56 65.9%	54 63.5%	37 43.5%	17 20.0%	10 11.8%	12 14.1%	49 57.6%	
FALL 2001:	76	68 89.5%	56 73.7%	54 71.1%	51 67.1%	50 65.8%	44 57.9%	41 53.9%	27 35.5%					
FALL 2002:	87	76 87.4%	61 70.1%	56 64.4%	50 57.5%	48 55.2%								
FALL 2003:	87	73 83.9%	58 66.7%	55 63.2%										
FALL 2004:	88	80 90.9%												
<b>AVERAGE:</b>		<b>90.9%</b>	<b>73.7%</b>	<b>70.5%</b>	<b>64.2%</b>	<b>63.2%</b>	<b>61.4%</b>	<b>58.6%</b>	<b>39.2%</b>	<b>20.1%</b>	<b>9.2%</b>	<b>16.1%</b>	<b>55.8%</b>	

Source: Office of Institutional Research

**Table 5g**  
**Retention of First-Time CAS Freshmen**  
**(Non-Athletes)**

Entering Class	Entered as Freshman	Returned as...							4-Year Grads	Returned for 5th Year		5-Year Grads	Total Grads	
		1stYr		Sophomore		Junior		Senior		Fall	Spring			
		Fall	Spring	Fall	Spring	Fall	Spring	Fall						Spring
FALL 1992:	121	107 88.4%	94 77.7%	88 72.7%	77 63.6%	77 63.6%	73 60.3%	67 55.4%	56 46.3%	14 11.6%	8 6.6%	8 6.6%	64 52.9%	
FALL 1993:	144	131 91.0%	110 76.4%	105 72.9%	92 63.9%	89 61.8%	82 56.9%	79 54.9%	68 47.2%	13 9.0%	7 4.9%	12 8.3%	80 55.6%	
FALL 1994:	128	114 89.1%	91 71.1%	83 64.8%	75 58.6%	76 59.4%	74 57.8%	65 50.8%	52 40.6%	25 19.5%	10 7.8%	21 16.4%	73 57.0%	
FALL 1995:	114	103 90.4%	91 79.8%	88 77.2%	82 71.9%	79 69.3%	74 64.9%	68 59.6%	54 47.4%	23 20.2%	12 10.5%	21 18.4%	75 65.8%	
FALL 1996:	104	93 89.4%	77 74.0%	74 71.2%	69 66.3%	68 65.4%	64 61.5%	64 61.5%	52 50.0%	11 10.6%	6 5.8%	6 5.8%	58 55.8%	
FALL 1997:	110	104 94.5%	89 80.9%	86 78.2%	78 70.9%	77 70.0%	76 69.1%	74 67.3%	56 50.9%	18 16.4%	7 6.4%	17 15.5%	73 66.4%	
FALL 1998:	101	92 91.1%	73 72.3%	70 69.3%	60 59.4%	58 57.4%	57 56.4%	50 49.5%	36 35.6%	14 13.9%	5 5.0%	13 12.9%	49 48.5%	
FALL 1999:	105	100 95.2%	87 82.9%	82 78.1%	76 72.4%	73 69.5%	68 64.8%	61 58.1%	41 39.0%	23 21.9%	11 10.5%	17 16.2%	58 55.2%	
FALL 2000:	131	124 94.7%	109 83.2%	102 77.9%	88 67.2%	86 65.6%	85 64.9%	80 61.1%	54 41.2%	27 20.6%	15 11.5%	22 16.8%	76 58.0%	
FALL 2001:	174	153 87.9%	125 71.8%	118 67.8%	107 61.5%	107 61.5%	104 59.8%	98 56.3%	69 39.7%					
FALL 2002:	144	129 89.6%	111 77.1%	104 72.2%	97 67.4%	92 63.9%								
FALL 2003:	138	126 91.3%	93 67.4%	90 65.2%										
FALL 2004:	115	105 91.3%												
<b>AVERAGE:</b>		<b>91.1%</b>	<b>76.2%</b>	<b>72.3%</b>	<b>65.7%</b>	<b>64.3%</b>	<b>61.6%</b>	<b>57.4%</b>	<b>43.8%</b>	<b>16.0%</b>	<b>7.6%</b>	<b>13.0%</b>	<b>57.2%</b>	

Source: Office of Institutional Research

**Table 5h**  
**Retention of First-Time CAS Freshmen**  
**(Football Players)**

Entering Class	Entered as Freshman Fall	Returned as...							4-Year Grads	Returned for 5th Year		5-Year Grads	Total Grads	
		1stYr		Sophomore		Junior		Senior		Fall	Spring			
		Spring	Fall	Spring	Fall	Spring	Fall	Spring						Fall
FALL 1986:	49	40 81.6%	36 73.5%	31 63.3%	22 44.9%	22 44.9%	22 44.9%	22 44.9%	13 26.5%	5 10.2%	4 8.2%	5 10.2%	18 36.7%	
FALL 1987:	41	40 97.6%	33 80.5%	30 73.2%	28 68.3%	26 63.4%	25 61.0%	25 61.0%	16 39.0%	7 17.1%	4 9.8%	8 19.5%	24 58.5%	
FALL 1988:	32	26 81.3%	22 68.8%	21 65.6%	17 53.1%	16 50.0%	12 37.5%	12 37.5%	6 18.8%	7 21.9%	6 18.8%	6 18.8%	12 37.5%	
FALL 1989:	41	40 97.6%	24 58.5%	23 56.1%	20 48.8%	22 53.7%	21 51.2%	21 51.2%	13 31.7%	5 12.2%	2 4.9%	7 17.1%	20 48.8%	
FALL 1990:	25	22 88.0%	14 56.0%	15 60.0%	14 56.0%	14 56.0%	15 60.0%	14 56.0%	8 32.0%	4 16.0%	0 0.0%	4 16.0%	12 48.0%	
FALL 1991:	23	21 91.3%	16 69.6%	14 60.9%	11 47.8%	11 47.8%	11 47.8%	11 47.8%	5 21.7%	5 21.7%	1 4.3%	5 21.7%	10 43.5%	
FALL 1992:	25	24 96.0%	24 96.0%	22 88.0%	19 76.0%	19 76.0%	19 76.0%	19 76.0%	9 36.0%	9 36.0%	4 16.0%	8 32.0%	17 68.0%	
FALL 1993:	23	20 87.0%	18 78.3%	16 69.6%	13 56.5%	12 52.2%	11 47.8%	11 47.8%	7 30.4%	4 17.4%	1 4.3%	1 4.3%	8 34.8%	
FALL 1994:	29	25 86.2%	20 69.0%	20 69.0%	18 62.1%	19 65.5%	19 65.5%	19 65.5%	15 51.7%	4 13.8%	3 10.3%	3 10.3%	18 62.1%	
FALL 1995:	34	32 94.1%	24 70.6%	23 67.6%	19 55.9%	19 55.9%	19 55.9%	19 55.9%	15 44.1%	3 8.8%	2 5.9%	2 5.9%	17 50.0%	
FALL 1996:	27	21 77.8%	13 48.1%	12 44.4%	10 37.0%	10 37.0%	8 29.6%	8 29.6%	4 14.8%	4 14.8%	1 3.7%	4 14.8%	8 29.6%	
FALL 1997:	53	46 86.8%	27 50.9%	27 50.9%	25 47.2%	25 47.2%	25 47.2%	24 45.3%	12 22.6%	11 20.8%	4 7.5%	9 17.0%	21 39.6%	
FALL 1998:	30	28 93.3%	21 70.0%	20 66.7%	19 63.3%	17 56.7%	17 56.7%	15 50.0%	7 23.3%	8 26.7%	3 10.0%	6 20.0%	13 43.3%	
FALL 1999:	24	22 91.7%	16 66.7%	16 66.7%	13 54.2%	12 50.0%	12 50.0%	10 41.7%	3 12.5%	7 29.2%	2 8.3%	8 33.3%	11 45.8%	
FALL 2000:	31	30 96.8%	26 83.9%	25 80.6%	23 74.2%	22 71.0%	22 71.0%	21 67.7%	17 54.8%	5 16.1%	3 9.7%	3 9.7%	20 64.5%	
FALL 2001:	34	26 76.5%	19 55.9%	20 58.8%	19 55.9%	18 52.9%	16 47.1%	15 44.1%	12 35.3%					
FALL 2002:	28	22 78.6%	14 50.0%	12 42.9%	10 35.7%	9 32.1%								
FALL 2003:	33	25 75.8%	14 42.4%	11 33.3%										
FALL 2004:	21	17 81.0%												
<b>AVERAGE:</b>		<b>87.3%</b>	<b>66.0%</b>	<b>62.1%</b>	<b>55.1%</b>	<b>53.7%</b>	<b>53.1%</b>	<b>51.4%</b>	<b>31.0%</b>	<b>18.8%</b>	<b>8.1%</b>	<b>16.7%</b>	<b>47.4%</b>	

Source: Office of Institutional Research



**Table 5i**  
**Retention of First-Time CAS Freshmen**  
**(Minority Students)**

Entering Class	Entered as Freshman	Returned as...							4-Year Grads	Returned for 5th Year		5-Year Grads	Total Grads	
		1stYr		Sophomore		Junior		Senior		Fall	Spring			
		Fall	Spring	Fall	Spring	Fall	Spring	Fall						Spring
FALL 1990:	5	5 100.0%	5 100.0%	5 100.0%	5 100.0%	5 100.0%	4 80.0%	4 80.0%	4 80.0%	0 0.0%	0 0.0%	0 0.0%	4 80.0%	
FALL 1991:	15	15 100.0%	12 80.0%	10 66.7%	8 53.3%	8 53.3%	7 46.7%	7 46.7%	6 40.0%	1 6.7%	0 0.0%	1 6.7%	7 46.7%	
FALL 1992:	8	7 87.5%	6 75.0%	4 50.0%	4 50.0%	4 50.0%	3 37.5%	3 37.5%	3 37.5%	0 0.0%	0 0.0%	0 0.0%	3 37.5%	
FALL 1993:	13	12 92.3%	12 92.3%	11 84.6%	8 61.5%	8 61.5%	8 61.5%	8 61.5%	5 38.5%	1 7.7%	1 7.7%	2 15.4%	7 53.8%	
FALL 1994:	19	15 78.9%	10 52.6%	8 42.1%	5 26.3%	6 31.6%	6 31.6%	5 26.3%	2 10.5%	4 21.1%	3 15.8%	4 21.1%	6 31.6%	
FALL 1995:	23	21 91.3%	15 65.2%	11 47.8%	10 43.5%	9 39.1%	8 34.8%	9 39.1%	6 26.1%	5 21.7%	3 13.0%	2 8.7%	8 34.8%	
FALL 1996:	15	12 80.0%	8 53.3%	7 46.7%	6 40.0%	6 40.0%	6 40.0%	5 33.3%	5 33.3%	0 0.0%	0 0.0%	0 0.0%	5 33.3%	
FALL 1997:	26	22 84.6%	15 57.7%	14 53.8%	12 46.2%	12 46.2%	12 46.2%	12 46.2%	7 26.9%	5 19.2%	0 0.0%	4 15.4%	11 42.3%	
FALL 1998:	19	18 94.7%	12 63.2%	12 63.2%	9 47.4%	9 47.4%	9 47.4%	8 42.1%	4 21.1%	4 21.1%	2 10.5%	4 21.1%	8 42.1%	
FALL 1999:	12	11 91.7%	8 66.7%	8 66.7%	8 66.7%	8 66.7%	7 58.3%	7 58.3%	2 16.7%	5 41.7%	2 16.7%	4 33.3%	6 50.0%	
FALL 2000:	13	10 76.9%	9 69.2%	6 46.2%	6 46.2%	6 46.2%	6 46.2%	6 46.2%	3 23.1%	3 23.1%	1 7.7%	2 15.4%	5 38.5%	
FALL 2001:	25	23 92.0%	17 68.0%	18 72.0%	16 64.0%	16 64.0%	12 48.0%	11 44.0%	7 28.0%					
FALL 2002:	29	28 96.6%	25 86.2%	20 69.0%	18 62.1%	17 58.6%								
FALL 2003:	18	16 88.9%	10 55.6%	10 55.6%										
FALL 2004:	27	23 85.2%												
<b>AVERAGE:</b>		<b>89.4%</b>	<b>70.4%</b>	<b>61.7%</b>	<b>54.4%</b>	<b>54.2%</b>	<b>48.2%</b>	<b>46.8%</b>	<b>31.8%</b>	<b>14.7%</b>	<b>6.5%</b>	<b>12.5%</b>	<b>44.6%</b>	

Source: Office of Institutional Research

**Table 5j**  
**Retention of First-Time CAS Freshmen**  
**(Scholarship Students: Harter, Kimball, University, Departmental, and Presidential)**

Entering Class	Entered as Freshman Fall	Returned as...								4-Year Grads	Returned for 5th Year		5-Year Grads	Total Grads
		1stYr		Sophomore		Junior		Senior			Fall	Spring		
		Spring	Fall	Spring	Fall	Spring	Fall	Spring						
FALL 1990:	52	50 96.2%	42 80.8%	39 75.0%	34 65.4%	34 65.4%	32 61.5%	32 61.5%	29 55.8%	2 3.8%	0 0.0%	2 3.8%	31 59.6%	
FALL 1991:	48	47 97.9%	44 91.7%	42 87.5%	41 85.4%	40 83.3%	39 81.3%	35 72.9%	34 70.8%	3 6.3%	2 4.2%	1 2.1%	35 72.9%	
FALL 1992:	45	44 97.8%	40 88.9%	37 82.2%	33 73.3%	33 73.3%	32 71.1%	30 66.7%	28 62.2%	4 8.9%	3 6.7%	3 6.7%	31 68.9%	
FALL 1993:	45	44 97.8%	38 84.4%	38 84.4%	32 71.1%	32 71.1%	30 66.7%	28 62.2%	29 64.4%	2 4.4%	1 2.2%	1 2.2%	30 66.7%	
FALL 1994:	55	52 94.5%	46 83.6%	42 76.4%	38 69.1%	39 70.9%	38 69.1%	32 58.2%	32 58.2%	8 14.5%	2 3.6%	6 10.9%	38 69.1%	
FALL 1995:	46	45 97.8%	40 87.0%	39 84.8%	38 82.6%	38 82.6%	37 80.4%	33 71.7%	30 65.2%	7 15.2%	3 6.5%	7 15.2%	37 80.4%	
FALL 1996:	42	39 92.9%	36 85.7%	36 85.7%	33 78.6%	33 78.6%	30 71.4%	28 66.7%	27 64.3%	4 9.5%	2 4.8%	2 4.8%	29 69.0%	
FALL 1997:	59	58 98.3%	50 84.7%	48 81.4%	44 74.6%	44 74.6%	43 72.9%	40 67.8%	34 57.6%	9 15.3%	3 5.1%	9 15.3%	43 72.9%	
FALL 1998:	67	62 92.5%	57 85.1%	55 82.1%	49 73.1%	50 74.6%	49 73.1%	44 65.7%	31 46.3%	13 19.4%	8 11.9%	11 16.4%	42 62.7%	
FALL 1999:	51	51 100.0%	46 90.2%	43 84.3%	43 84.3%	42 82.4%	41 80.4%	36 70.6%	33 64.7%	7 13.7%	4 7.8%	7 13.7%	40 78.4%	
FALL 2000:	100	96 96.0%	92 92.0%	90 90.0%	84 84.0%	80 80.0%	77 77.0%	69 69.0%	54 54.0%	20 20.0%	11 11.0%	17 17.0%	71 71.0%	
FALL 2001:	187	171 91.4%	146 78.1%	143 76.5%	132 70.6%	131 70.1%	124 66.3%	116 62.0%	85 45.5%					
FALL 2002:	175	161 92.0%	139 79.4%	129 73.7%	120 68.6%	115 65.7%								
FALL 2003:	167	150 89.8%	122 73.1%	119 71.3%										
FALL 2004:	116	107 92.2%												
<b>AVERAGE:</b>		<b>95.1%</b>	<b>84.6%</b>	<b>81.1%</b>	<b>75.4%</b>	<b>74.8%</b>	<b>72.6%</b>	<b>66.3%</b>	<b>59.1%</b>	<b>11.9%</b>	<b>5.8%</b>	<b>9.8%</b>	<b>70.2%</b>	

Source: Office of Institutional Research

**Table 5k**  
**Retention of First-Time CAS Freshmen**  
**(Standards Committee Admits)**

Entering Class	Entered as Freshman	Returned as...								4-Year Grads	Returned for 5th Year		5-Year Grads	Total Grads
		1stYr		Sophomore		Junior		Senior			Fall	Spring		
		Fall	Spring	Fall	Spring	Fall	Spring	Fall	Spring					
FALL 1987:	21	19 90.5%	11 52.4%	10 47.6%	7 33.3%	7 33.3%	5 23.8%	5 23.8%	5 23.8%	1 4.8%	0 0.0%	1 4.8%	6 28.6%	
FALL 1988:	18	15 83.3%	11 61.1%	11 61.1%	10 55.6%	10 55.6%	9 50.0%	8 44.4%	8 44.4%	5 27.8%	4 22.2%	3 16.7%	11 61.1%	
FALL 1989:	27	23 85.2%	22 81.5%	15 55.6%	14 51.9%	14 51.9%	14 51.9%	13 48.1%	9 33.3%	5 18.5%	4 14.8%	5 18.5%	14 51.9%	
FALL 1990:	17	15 88.2%	13 76.5%	12 70.6%	9 52.9%	9 52.9%	9 52.9%	9 52.9%	6 35.3%	3 17.6%	1 5.9%	3 17.6%	9 52.9%	
FALL 1991:	21	19 90.5%	13 61.9%	11 52.4%	10 47.6%	10 47.6%	10 47.6%	9 42.9%	6 28.6%	3 14.3%	1 4.8%	1 4.8%	7 33.3%	
FALL 1992:	13	12 92.3%	9 69.2%	9 69.2%	8 61.5%	8 61.5%	8 61.5%	7 53.8%	2 15.4%	5 38.5%	3 23.1%	4 30.8%	6 46.2%	
FALL 1993:	11	9 81.8%	8 72.7%	8 72.7%	7 63.6%	6 54.5%	5 45.5%	6 54.5%	2 18.2%	2 18.2%	0 0.0%	2 18.2%	4 36.4%	
FALL 1994:	9	6 66.7%	3 33.3%	4 44.4%	3 33.3%	3 33.3%	3 33.3%	3 33.3%	2 22.2%	1 11.1%	1 11.1%	1 11.1%	3 33.3%	
FALL 1995:	7	7 100.0%	6 85.7%	6 85.7%	5 71.4%	5 71.4%	4 57.1%	4 57.1%	2 28.6%	2 28.6%	2 28.6%	2 28.6%	4 57.1%	
FALL 1996:	21	18 85.7%	11 52.4%	9 42.9%	9 42.9%	8 38.1%	8 38.1%	8 38.1%	4 19.0%	4 19.0%	3 14.3%	3 14.3%	7 33.3%	
FALL 1997:	12	12 100.0%	9 75.0%	9 75.0%	7 58.3%	7 58.3%	6 50.0%	6 50.0%	3 25.0%	3 25.0%	0 0.0%	2 16.7%	5 41.7%	
FALL 1998:	17	14 82.4%	8 47.1%	8 47.1%	7 41.2%	6 35.3%	6 35.3%	5 29.4%	0 0.0%	5 29.4%	1 5.9%	5 29.4%	5 29.4%	
FALL 1999:	17	16 94.1%	13 76.5%	12 70.6%	11 64.7%	10 58.8%	10 58.8%	10 58.8%	2 11.8%	8 47.1%	5 29.4%	6 35.3%	8 47.1%	
FALL 2000:	15	12 80.0%	10 66.7%	9 60.0%	7 46.7%	7 46.7%	6 40.0%	5 33.3%	1 6.7%	3 20.0%	2 13.3%	2 13.3%	3 20.0%	
FALL 2001:	8	6 75.0%	4 50.0%	3 37.5%	3 37.5%	3 37.5%	2 25.0%	2 25.0%	0 0.0%					
FALL 2002:	16	13 81.3%	11 68.8%	10 62.5%	9 56.3%	9 56.3%								
FALL 2003:	13	12 92.3%	6 46.2%	5 38.5%										
FALL 2004:	15	12 80.0%												
<b>AVERAGE:</b>		<b>86.1%</b>	<b>63.3%</b>	<b>58.4%</b>	<b>51.2%</b>	<b>49.6%</b>	<b>44.7%</b>	<b>43.0%</b>	<b>20.8%</b>	<b>22.8%</b>	<b>12.4%</b>	<b>18.6%</b>	<b>40.9%</b>	

Source: Office of Institutional Research

**Table 5I**  
**Graduation Rates for**  
**Entering CAS Freshmen Cohorts (1992-2001)**

	1992	1993	1994	1995	1996	1997	1998	1999	2000	2001	Average
<b>Total Number in Cohort</b>	<b>198</b>	<b>206</b>	<b>211</b>	<b>218</b>	<b>185</b>	<b>221</b>	<b>199</b>	<b>184</b>	<b>216</b>	<b>250</b>	<b>203</b>
<b>% Graduating within Four Years</b>	<b>44.9%</b>	<b>48.5%</b>	<b>37.9%</b>	<b>45.9%</b>	<b>43.8%</b>	<b>40.3%</b>	<b>34.7%</b>	<b>39.1%</b>	<b>42.1%</b>	<b>38.4%</b>	<b>41.6%</b>
Subgroups:											
Males	35.2%	40.0%	42.9%	41.0%	30.5%	30.5%	25.8%	23.5%	41.2%	31.4%	<b>34.2%</b>
Females	53.3%	54.0%	34.6%	50.0%	57.8%	49.1%	41.8%	51.5%	43.0%	43.2%	<b>47.8%</b>
Greeks	48.9%	50.0%	41.6%	53.3%	50.0%	46.2%	43.3%	47.2%	39.3%	42.1%	<b>46.2%</b>
Non-Greeks	36.1%	45.7%	35.7%	36.5%	34.2%	33.7%	25.3%	27.6%	46.9%	34.9%	<b>35.7%</b>
Athletes	42.9%	51.6%	36.1%	44.2%	35.8%	29.7%	33.7%	39.2%	43.5%	35.5%	<b>39.2%</b>
Non-Athletes	46.3%	47.2%	40.6%	47.4%	50.0%	50.9%	35.6%	39.0%	41.2%	39.7%	<b>43.8%</b>
Football Players	36.0%	30.4%	51.7%	44.1%	14.8%	22.6%	23.3%	12.5%	54.8%	35.3%	<b>32.6%</b>
Minority Students	37.5%	38.5%	10.5%	26.1%	33.3%	26.9%	21.1%	16.7%	23.1%	28.0%	<b>26.2%</b>
Scholarship Recipients	62.2%	64.4%	58.2%	65.2%	64.3%	57.6%	46.3%	64.7%	54.0%	45.5%	<b>58.2%</b>
Committee Admits	15.4%	18.2%	22.2%	28.6%	19.0%	25.0%	0.0%	11.8%	6.7%	0.0%	<b>14.7%</b>
<b>% Graduating within Five Years</b>	<b>57.1%</b>	<b>56.3%</b>	<b>54.0%</b>	<b>61.9%</b>	<b>54.1%</b>	<b>55.2%</b>	<b>51.8%</b>	<b>58.7%</b>	<b>57.9%</b>		<b>56.3%</b>
Subgroups:											
Males	53.8%	43.8%	60.7%	56.0%	42.1%	46.7%	50.6%	50.6%	54.9%		<b>51.0%</b>
Females	59.8%	64.3%	49.6%	66.9%	66.7%	62.9%	52.7%	65.0%	60.5%		<b>61.0%</b>
Greeks	62.8%	60.3%	59.3%	70.5%	58.9%	59.8%	56.7%	69.4%	56.3%		<b>61.6%</b>
Non-Greeks	44.3%	48.6%	49.0%	51.0%	46.6%	50.0%	46.3%	43.4%	60.5%		<b>48.9%</b>
Athletes	63.6%	58.1%	50.6%	57.7%	51.9%	44.1%	55.1%	63.3%	57.6%		<b>55.8%</b>
Non-Athletes	52.9%	55.6%	57.0%	65.8%	55.8%	66.4%	48.5%	55.2%	58.0%		<b>57.2%</b>
Football Players	68.0%	34.8%	62.1%	50.0%	29.6%	39.6%	43.3%	45.8%	64.5%		<b>48.6%</b>
Minority Students	37.5%	53.8%	31.6%	34.8%	33.3%	42.3%	42.1%	50.0%	38.5%		<b>40.4%</b>
Scholarship Recipients	68.9%	66.7%	69.1%	80.4%	69.0%	72.9%	62.7%	78.4%	71.0%		<b>71.0%</b>
Committee Admits	46.2%	36.4%	33.3%	57.1%	33.3%	41.7%	29.4%	47.1%	20.0%		<b>38.3%</b>

Source: Office of Institutional Research

**Figure 5c**

**4-Year Graduation Rates for Fall Entering Classes (1992 - 2001)  
Gender Versus All Freshmen**

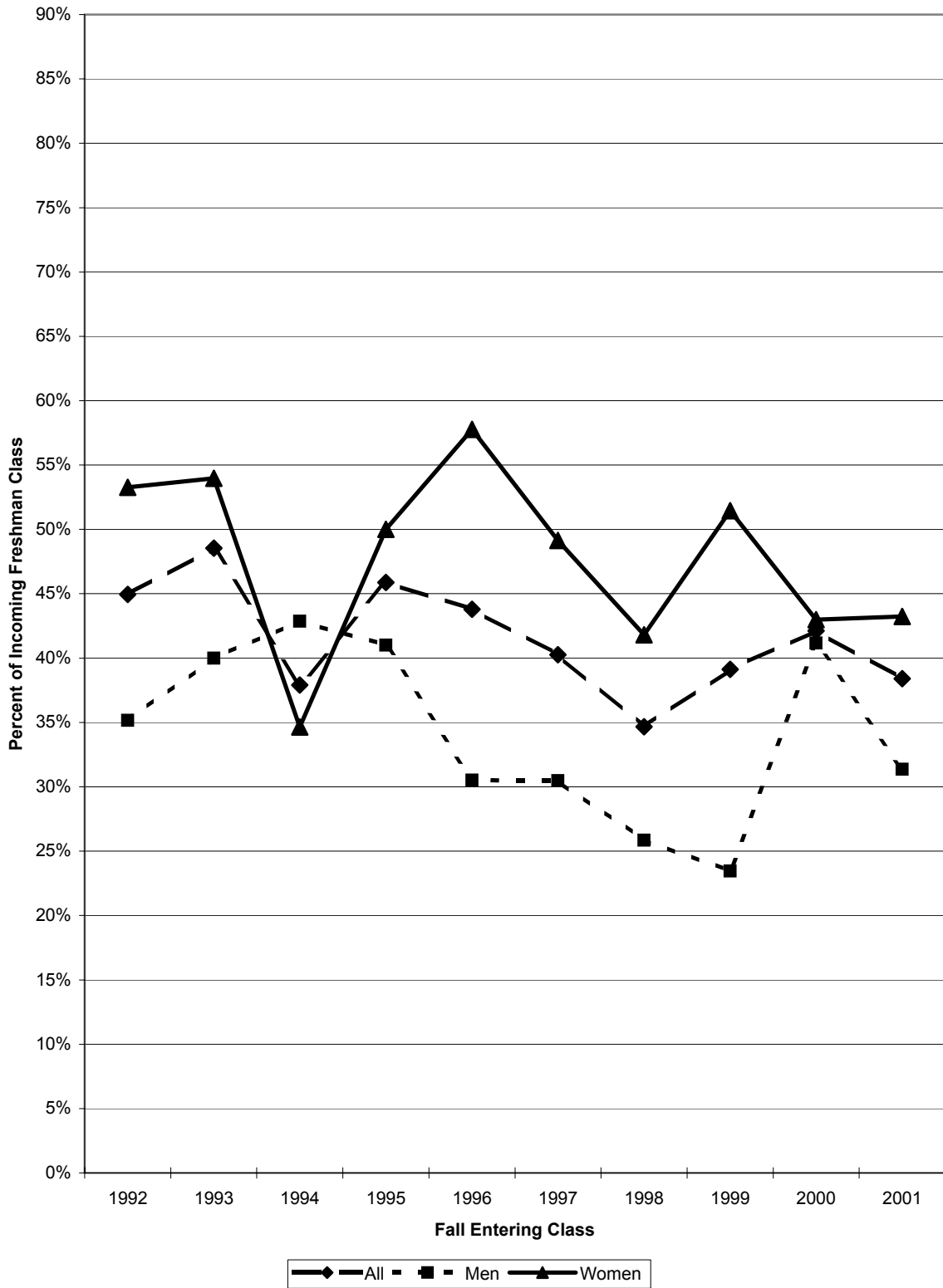
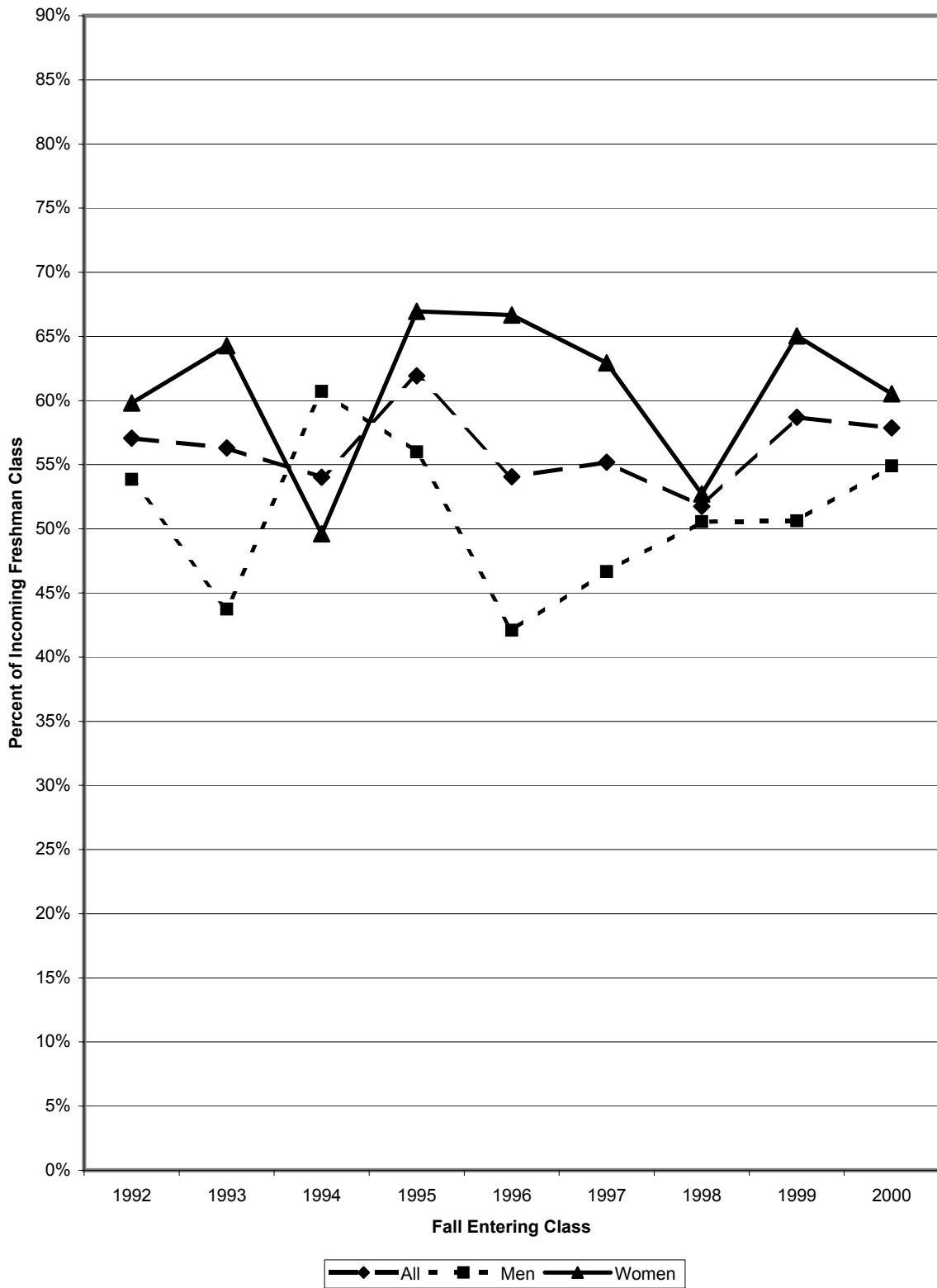


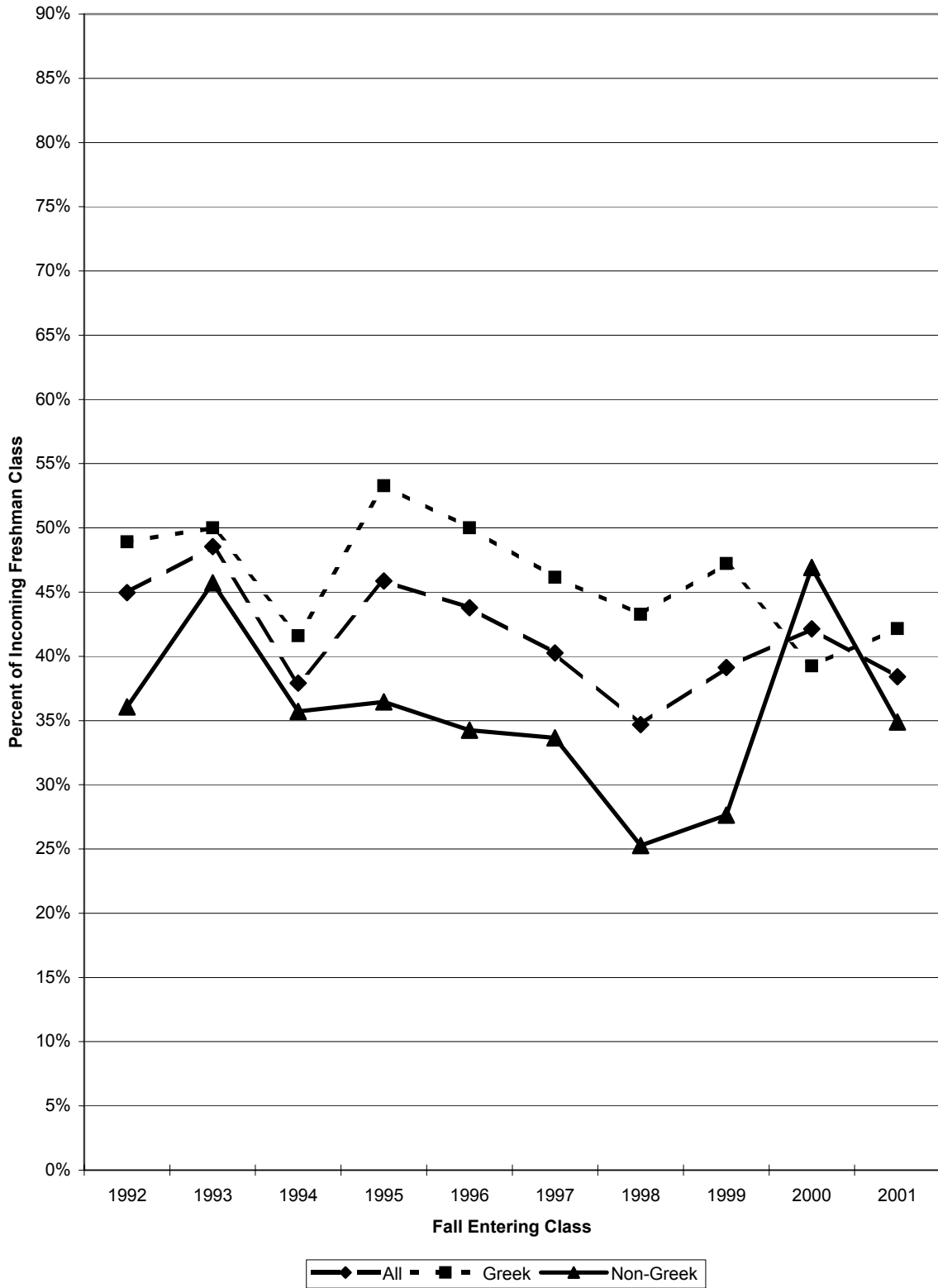
Figure 5d

5-Year Graduation Rates for Fall Entering Classes (1992 - 2000)  
Gender Versus All Freshmen



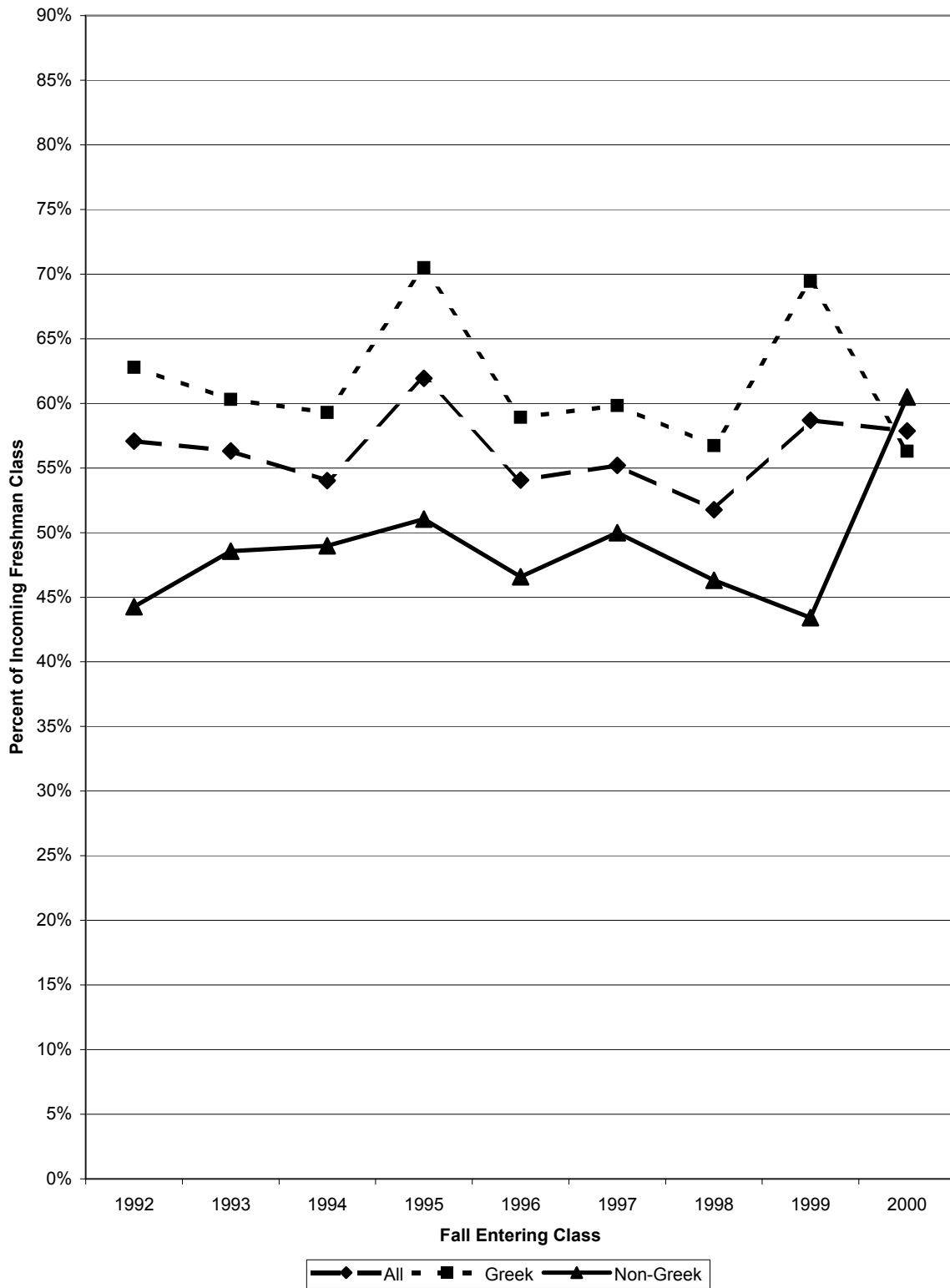
**Figure 5e**

**4-Year Graduation Rates for Fall Entering Classes (1992 - 2001)  
Greek Status Versus All Freshmen**



**Figure 5f**

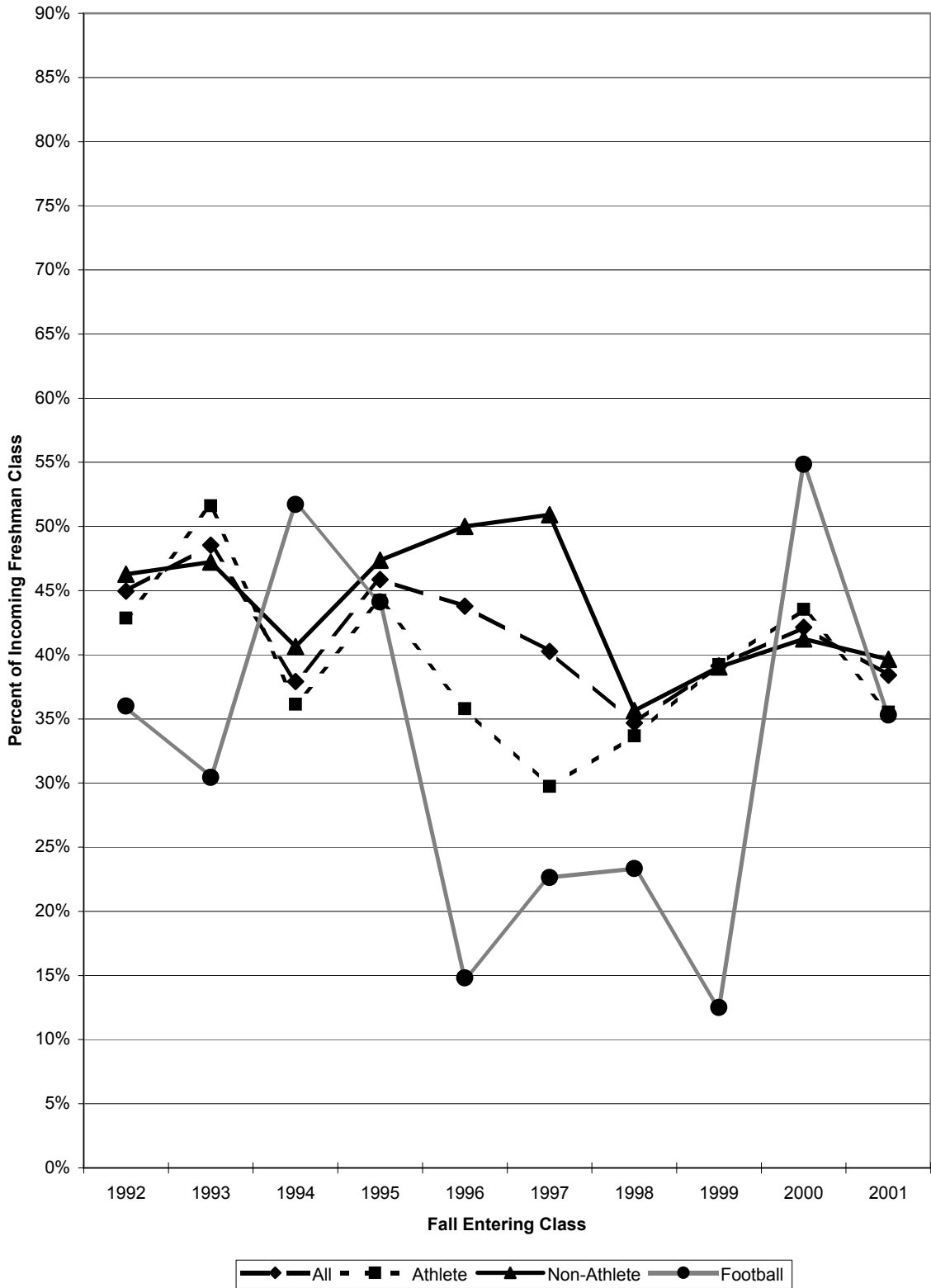
**5-Year Graduation Rates for Fall Entering Classes (1992 - 2000)  
Greek Status Versus All Freshmen**





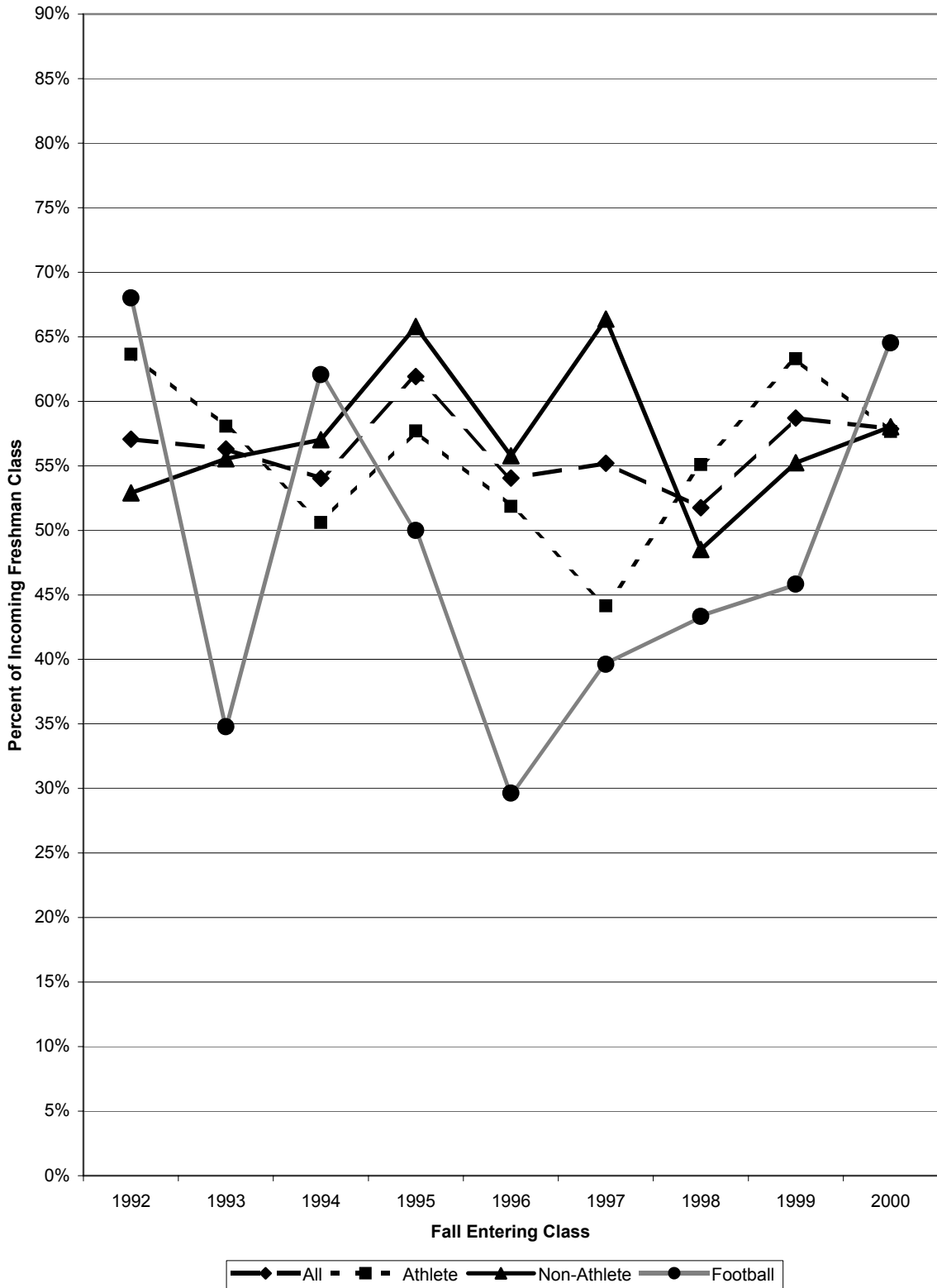
**Figure 5g**

**4-Year Graduation Rates for Fall Entering Classes (1992 - 2001)  
Athletes Versus All Freshmen**



**Figure 5h**

**5-Year Graduation Rates for Fall Entering Classes (1992 - 2000)  
Athletes Versus All Freshmen**



**Figure 5i**

**4-Year Graduation Rates for Fall Entering Classes (1992 - 2001)  
Various Subgroups Versus All Freshmen**

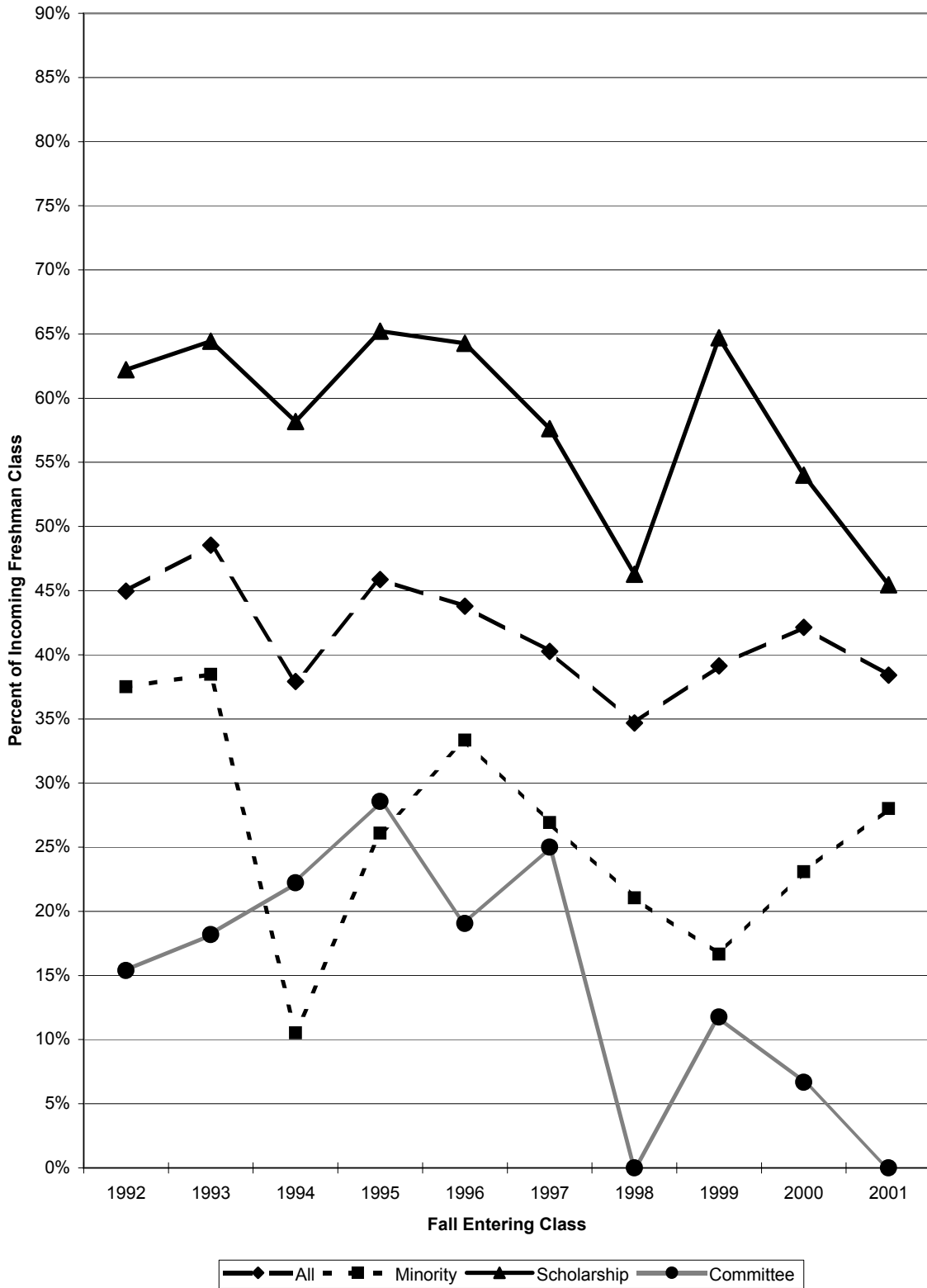
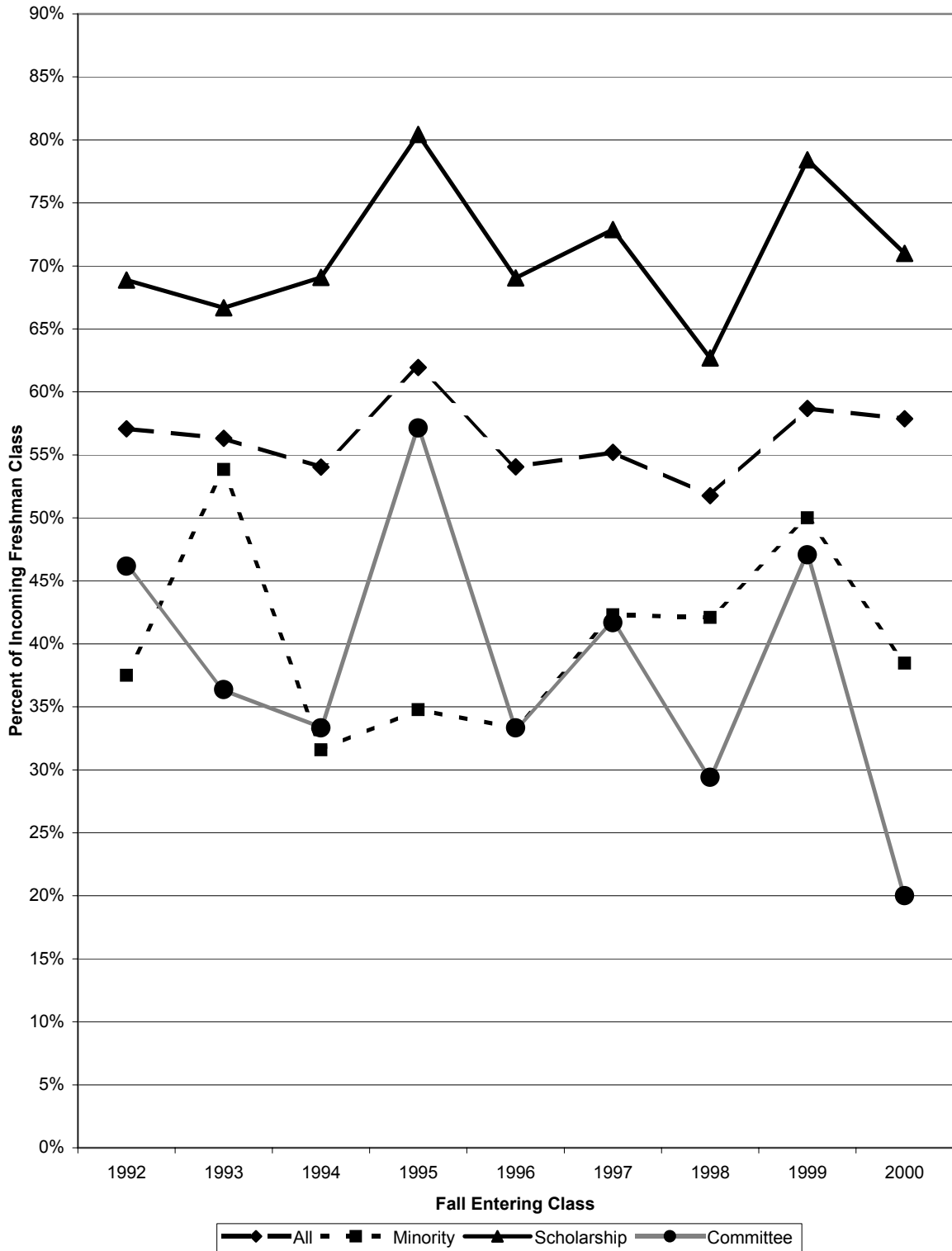


Figure 5j

5-Year Graduation Rates for Fall Entering Classes (1992 - 2000)  
Various Subgroups Versus All Freshmen



## Exhibit 6

### Retention of Transfer Students (CAS)

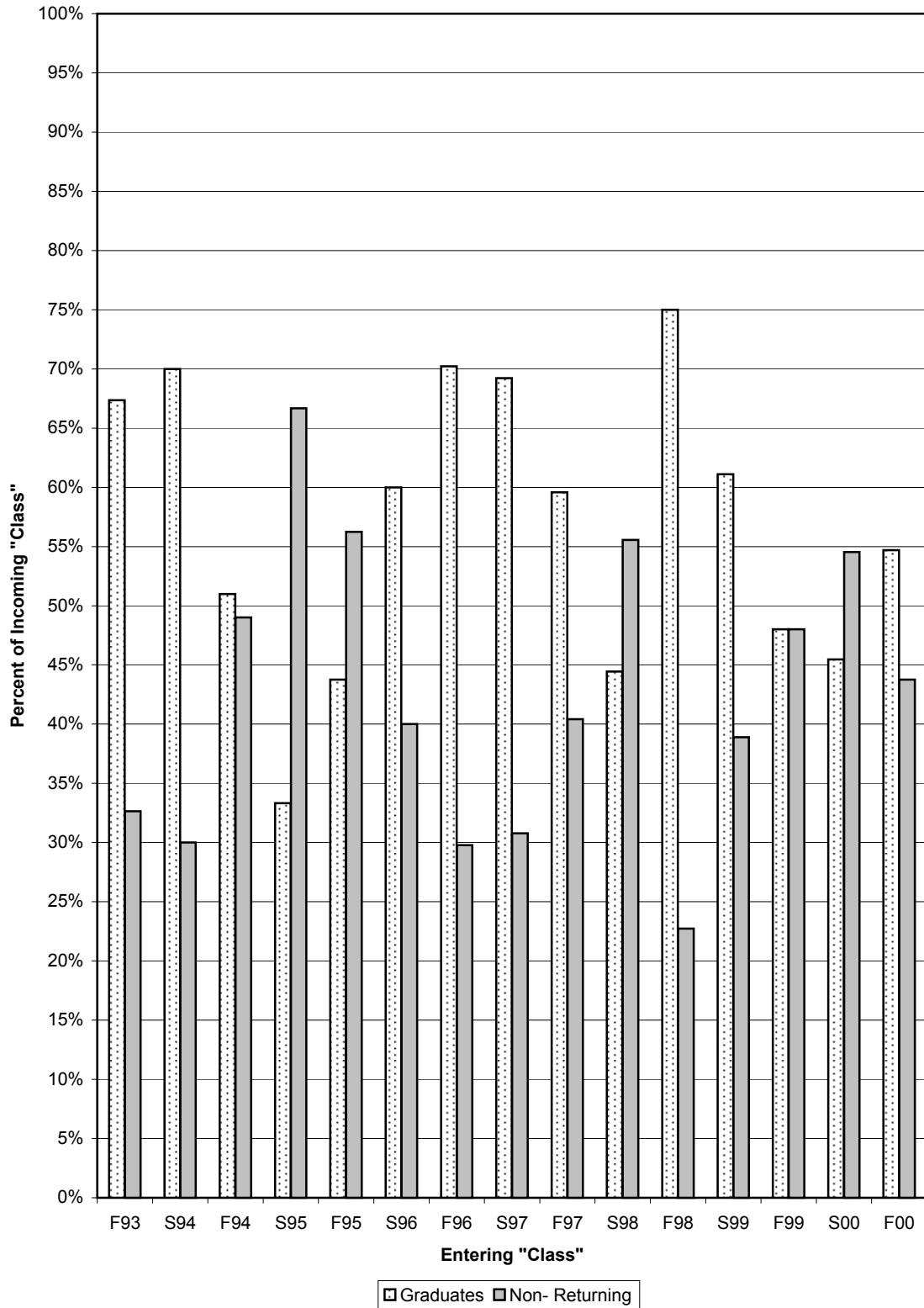
The following table and figure present transfer retention data since the fall of 1993. Tracking transfer students is different than tracking first-time freshmen in that the "expected" time until graduation varies from student to student. Therefore, the most meaningful retention statistics regarding transfer students are: 1) the number and percentage who graduate; 2) the number and percentage who do not graduate; and 3) the number and percentage of those who persist but have not yet graduated. The number and percentages of those who have graduated and those who have not graduated (non-returning) for each entering "semester class" are listed in the last two columns of Table 6. The number and percentage of transfer students who have returned but have not yet graduated are tracked along the middle columns of the table according to how many semesters these students have been at Baker. The average graduation and non-returning rates presented in the lower right corner of the table only summarize those classes considered "complete" – none of the students remain enrolled. Figure 6 plots graduation and non-returning rates for the completed entering "classes" from Fall 1993 through Fall 2000.

**Table 6**  
**Retention of CAS Transfer Students**

Entering Class	Entered as a Transfer	Returned for "X" Semesters										Graduates	Non-Returning
		2	3	4	5	6	7	8	9	10			
FALL 1993:	49	38 77.6%	39 79.6%	31 63.3%	20 40.8%	15 30.6%	4 8.2%	2 4.1%	0 0.0%	0 0.0%	33 67.3%	16 32.7%	
SPRING 1994:	10	9 90.0%	9 90.0%	10 100.0%	7 70.0%	7 70.0%	6 60.0%	1 10.0%	0 0.0%	0 0.0%	7 70.0%	3 30.0%	
FALL 1994:	51	43 84.3%	37 72.5%	34 66.7%	26 51.0%	18 35.3%	5 9.8%	2 3.9%	0 0.0%	0 0.0%	26 51.0%	25 49.0%	
SPRING 1995:	18	15 83.3%	10 55.6%	9 50.0%	7 38.9%	4 22.2%	4 22.2%	0 0.0%	0 0.0%	0 0.0%	6 33.3%	12 66.7%	
FALL 1995:	48	36 75.0%	29 60.4%	25 52.1%	11 22.9%	8 16.7%	3 6.3%	1 2.1%	0 0.0%	0 0.0%	21 43.8%	27 56.3%	
SPRING 1996:	10	7 70.0%	7 70.0%	5 50.0%	5 50.0%	2 20.0%	1 10.0%	1 10.0%	0 0.0%	0 0.0%	6 60.0%	4 40.0%	
FALL 1996:	47	44 93.6%	38 80.9%	39 83.0%	31 66.0%	24 51.1%	11 23.4%	5 10.6%	0 0.0%	0 0.0%	33 70.2%	14 29.8%	
SPRING 1997:	13	10 76.9%	10 76.9%	8 61.5%	8 61.5%	4 30.8%	3 23.1%	1 7.7%	1 7.7%	0 0.0%	9 69.2%	4 30.8%	
FALL 1997:	47	41 87.2%	35 74.5%	33 70.2%	26 55.3%	20 42.6%	9 19.1%	6 12.8%	4 8.5%	0 0.0%	28 59.6%	19 40.4%	
SPRING 1998:	9	8 88.9%	5 55.6%	4 44.4%	4 44.4%	4 44.4%	3 33.3%	1 11.1%	0 0.0%	0 0.0%	4 44.4%	5 55.6%	
FALL 1998:	44	38 86.4%	37 84.1%	35 79.5%	28 63.6%	25 56.8%	10 22.7%	5 11.4%	1 2.3%	1 2.3%	33 75.0%	10 22.7%	
SPRING 1999:	18	14 77.8%	11 61.1%	12 66.7%	11 61.1%	5 27.8%	4 22.2%	0 0.0%	0 0.0%	0 0.0%	11 61.1%	7 38.9%	
FALL 1999:	25	22 88.0%	16 64.0%	14 56.0%	10 40.0%	6 24.0%	4 16.0%	4 16.0%	1 4.0%	1 4.0%	12 48.0%	12 48.0%	
SPRING 2000:	22	17 77.3%	16 72.7%	13 59.1%	12 54.5%	9 40.9%	5 22.7%	2 9.1%	2 9.1%	0 0.0%	10 45.5%	12 54.5%	
FALL 2000:	64	50 78.1%	44 68.8%	39 60.9%	25 39.1%	16 25.0%	5 7.8%	2 3.1%	3 4.7%	1 1.6%	35 54.7%	28 43.8%	
SPRING 2001:	12	9 75.0%	7 58.3%	6 50.0%	6 50.0%	4 33.3%	1 8.3%	1 8.3%	0 0.0%		7 58.3%	5 41.7%	
FALL 2001:	46	41 89.1%	28 60.9%	26 56.5%	17 37.0%	12 26.1%	7 15.2%	5 10.9%			25 0.0%	21 45.7%	
SPRING 2002:	13	8 61.5%	5 38.5%	3 23.1%	3 23.1%	2 15.4%	2 15.4%				2 15.4%	9 69.2%	
FALL 2002:	38	31 81.6%	23 60.5%	23 60.5%	15 39.5%	15 39.5%					10 26.3%	16 42.1%	
SPRING 2003:	11	11 100.0%	11 100.0%	8 72.7%	8 72.7%						1 9.1%	3 27.3%	
FALL 2003:	42	32 76.2%	31 73.8%	30 71.4%							2 4.8%	12 28.6%	
SPRING 2004:	6	4 66.7%	3 50.0%								1 16.7%	2 33.3%	
FALL 2004:	57	53 93.0%										4 7.0%	
SPRING 2005:	18												
<b>AVERAGE:</b>		Completed "classes" only (Fall 1993 through Fall 2000)										<b>56.9%</b>	<b>42.6%</b>

**Figure 6**

**Retention of CAS Transfer Students  
Graduation vs Non-Returning Rates**



## Exhibit 7

### Annual Cumulative Grade Point Averages (CAS, SON, SPGS)

The following table and figure present and illustrate respectively the semester-by-semester grade point averages (GPAs) for the Bachelor's degree programs at each of the three schools of Baker University for the past fourteen years (since the inception of the SON program). Since SPGS does not operate under a traditional semester calendar, semester time period equivalents are used to track students' academic performance.



**Table 7**

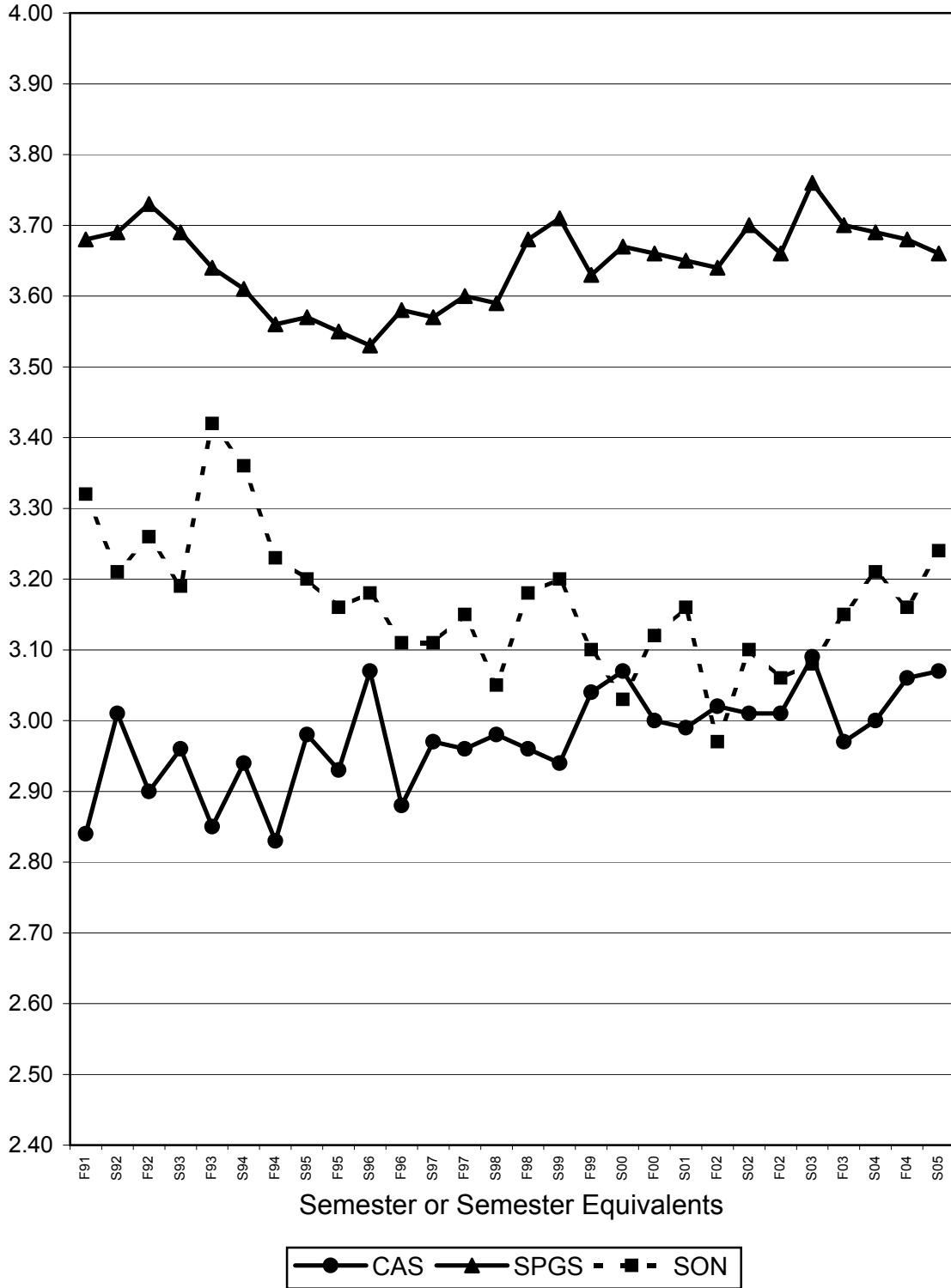
**University Cumulative Grade Point Averages  
(Bachelor Degree Programs Only)**

<b>Academic Semester</b>	<b>CAS</b>	<b>SPGS</b>	<b>SON</b>
Fall 1991	2.84	3.68	3.32
Spring 1992	3.01	3.69	3.21
Fall 1992	2.90	3.73	3.26
Spring 1993	2.96	3.69	3.19
Fall 1993	2.85	3.64	3.42
Spring 1994	2.94	3.61	3.36
Fall 1994	2.83	3.56	3.23
Spring 1995	2.98	3.57	3.20
Fall 1995	2.93	3.55	3.16
Spring 1996	3.07	3.53	3.18
Fall 1996	2.88	3.58	3.11
Spring 1997	2.97	3.57	3.11
Fall 1997	2.96	3.60	3.15
Spring 1998	2.98	3.59	3.05
Fall 1998	2.96	3.68	3.18
Spring 1999	2.94	3.71	3.20
Fall 1999	3.04	3.63	3.10
Spring 2000	3.07	3.67	3.03
Fall 2000	3.00	3.66	3.12
Spring 2001	2.99	3.65	3.16
Fall 2001	3.02	3.64	2.97
Spring 2002	3.01	3.70	3.10
Fall 2002	3.01	3.66	3.06
Spring 2003	3.09	3.76	3.08
Fall 2003	2.97	3.70	3.15
Spring 2004	3.00	3.69	3.21
Fall 2004	3.06	3.68	3.16
Spring 2005	3.07	3.66	3.24
Fall Avg	2.94	3.64	3.17
Spring Avg	3.00	3.65	3.16

Sources: Office of Records and Registration and SPGS

**Figure 7**

**Semester by Semester Cumulative GPA  
CAS, SPGS, SON**



## Exhibit 8

### Distribution of Majors and Degrees (CAS, SON, SPGS)

The following two tables list the distribution of majors produced by Baker's CAS students and the distribution of different degrees awarded by Baker's CAS, SON, and SPGS over the most recent 5-year period. Table 8a includes the percentage of seniors graduating with each of the various majors during the most recent 5-year tracking period. Similarly, the Distribution of Degrees Awarded table (Table 8b) includes the number and percentage of graduating students receiving each degree as well as an overall breakdown of degree type (Associate, Bachelor, Master) for the same time period.

**Table 8a**  
**Distribution of Majors (CAS)**  
**2001-2005**

Major Field	2001		2002		2003		2004		2005		TOTAL	
	Num.	Pct.	Num.	Pct.	Num.	Pct.	Num.	Pct.	Num.	Pct.	Num.	Pct.
Accounting	9	6.0%	11	7.2%	9	5.5%	7	4.2%	7	4.2%	43	5.5%
Art	4	2.7%	4	2.6%	2	1.2%	6	3.6%	5	3.0%	21	2.7%
Biology	16	10.7%	18	11.8%	15	9.2%	12	7.3%	15	9.1%	76	9.7%
Business	40	26.7%	37	24.3%	48	29.4%	37	22.4%	30	18.2%	192	24.6%
Chemistry	1	0.7%	3	2.0%	2	1.2%	0	0.0%	2	1.2%	8	1.0%
Computer Information Systems	2	1.3%	1	0.7%	0	0.0%	3	1.8%	2	1.2%	8	1.0%
Computer Science	2	1.3%	4	2.6%	1	0.6%	2	1.2%	2	1.2%	11	1.4%
Economics	1	0.7%	0	0.0%	1	0.6%	4	2.4%	1	0.6%	7	0.9%
Elementary Education	11	7.3%	15	9.9%	11	6.7%	10	6.1%	14	8.5%	61	7.8%
Engineering	0	0.0%	0	0.0%	0	0.0%	0	0.0%	0	0.0%	0	0.0%
English	7	4.7%	7	4.6%	6	3.7%	5	3.0%	3	1.8%	28	3.6%
ETM	2	1.3%	1	0.7%	n/a		n/a		n/a		3	0.4%
Foreign Language (French)	3	2.0%	0	0.0%	0	0.0%	2	1.2%	0	0.0%	5	0.6%
Foreign Language (German)	0	0.0%	0	0.0%	0	0.0%	1	0.6%	1	0.6%	2	0.3%
Foreign Language (Spanish)	2	1.3%	1	0.7%	3	1.8%	2	1.2%	1	0.6%	9	1.2%
Functional/Self-Designed	2	1.3%	3	2.0%	3	1.8%	2	1.2%	2	1.2%	12	1.5%
History	3	2.0%	6	3.9%	3	1.8%	14	8.5%	6	3.6%	32	4.1%
International Business	5	3.3%	2	1.3%	4	2.5%	3	1.8%	2	1.2%	16	2.0%
Mass Communication	12	8.0%	8	5.3%	13	8.0%	15	9.1%	14	8.5%	62	7.9%
Mathematics	2	1.3%	4	2.6%	6	3.7%	5	3.0%	8	4.8%	25	3.2%
Molecular Bioscience	n/a		n/a		n/a		n/a		3	1.8%	3	0.4%
Music/Music Education	1	0.7%	2	1.3%	2	1.2%	4	2.4%	5	3.0%	14	1.8%
Philosophy	0	0.0%	1	0.7%	1	0.6%	2	1.2%	1	0.6%	5	0.6%
Physical Education	10	6.7%	10	6.6%	16	9.8%	13	7.9%	11	6.7%	60	7.7%
Physics	2	1.3%	1	0.7%	2	1.2%	3	1.8%	7	4.2%	15	1.9%
Political Science	2	1.3%	2	1.3%	4	2.5%	7	4.2%	6	3.6%	21	2.7%
Psychology	12	8.0%	11	7.2%	13	8.0%	8	4.8%	9	5.5%	53	6.8%
Religion	1	0.7%	0	0.0%	0	0.0%	1	0.6%	0	0.0%	2	0.3%
Sociology	9	6.0%	9	5.9%	4	2.5%	7	4.2%	7	4.2%	36	4.6%
Speech Communication	4	2.7%	1	0.7%	0	0.0%	1	0.6%	1	0.6%	7	0.9%
Theatre	2	1.3%	1	0.7%	2	1.2%	2	1.2%	2	1.2%	9	1.2%
Wildlife Biology	1	0.7%	1	0.7%	3	1.8%	3	1.8%	1	0.6%	9	1.2%
<b>Total Majors Achieved</b>	<b>168</b>		<b>164</b>		<b>174</b>		<b>181</b>		<b>168</b>		<b>855</b>	
<b>Total Degrees Awarded</b>	<b>150</b>		<b>152</b>		<b>163</b>		<b>165</b>		<b>152</b>		<b>782</b>	

Source: Office of Records and Registration

**Table 8b**  
**Distribution of Degrees Awarded**  
**CAS, SON, & SPGS**  
**2001-2005**

Degrees Awarded CAS, SON, & SPGS	2001		2002		2003		2004		2005		TOTAL	
	Num.	% Grads	Num.	% Grads	Num.	% Grads	Num.	% Grads	Num.	% Grads	Num.	% Grads
Associate of Arts in Business	88	9.0%	124	11.6%	97	9.0%	86	7.3%	85	8.0%	480	8.9%
Bachelor of Arts	44	4.5%	41	3.8%	37	3.4%	62	5.3%	32	3.0%	216	4.0%
Bachelor of Science	105	10.7%	109	10.2%	123	11.4%	99	8.4%	116	10.9%	552	10.3%
Bachelor of Music Education	1	0.1%	2	0.2%	2	0.2%	4	0.3%	4	0.4%	13	0.2%
Bachelor of Music Performance	0	0.0%	0	0.0%	1	0.1%	n/a	n/a	n/a	n/a	1	0.0%
Bachelor of Science in Nursing	41	4.2%	40	3.7%	41	3.8%	54	4.6%	60	5.6%	236	4.4%
Bachelor of Business Administration	109	11.1%	97	9.0%	110	10.2%	122	10.4%	134	12.6%	572	10.6%
Bachelor of Science in Management	96	9.8%	68	6.3%	93	8.6%	85	7.2%	75	7.0%	417	7.8%
Bachelor of Business Info Systems	n/a	0.0%	n/a	0.0%	n/a	0.0%	n/a	n/a	2	0.2%	2	0.0%
Master of Business Administration	251	25.6%	316	29.5%	250	23.1%	320	27.2%	277	26.0%	1414	26.3%
Master of Science in Management	104	10.6%	103	9.6%	108	10.0%	86	7.3%	50	4.7%	451	8.4%
Master of Liberal Arts	37	3.8%	26	2.4%	33	3.1%	30	2.6%	30	2.8%	156	2.9%
Master of Arts in Education	86	8.8%	106	9.9%	137	12.7%	149	12.7%	140	13.1%	618	11.5%
Master of Arts in School Leadership	20	2.0%	40	3.7%	49	4.5%	78	6.6%	62	5.8%	249	4.6%
<b>TOTAL ASSOCIATE:</b>	<b>88</b>	<b>9.0%</b>	<b>124</b>	<b>11.6%</b>	<b>97</b>	<b>9.0%</b>	<b>86</b>	<b>7.3%</b>	<b>85</b>	<b>8.0%</b>	<b>480</b>	<b>8.9%</b>
<b>TOTAL BACHELOR:</b>	<b>396</b>	<b>40.3%</b>	<b>357</b>	<b>33.3%</b>	<b>407</b>	<b>37.7%</b>	<b>426</b>	<b>36.3%</b>	<b>423</b>	<b>39.6%</b>	<b>2007</b>	<b>37.3%</b>
<b>TOTAL MASTER:</b>	<b>498</b>	<b>50.7%</b>	<b>591</b>	<b>55.1%</b>	<b>577</b>	<b>53.4%</b>	<b>663</b>	<b>56.4%</b>	<b>559</b>	<b>52.4%</b>	<b>2888</b>	<b>53.7%</b>
<b>TOTAL DEGREES AWARDED:</b>	<b>982</b>		<b>1072</b>		<b>1081</b>		<b>1175</b>		<b>1067</b>		<b>5375</b>	

Source: Office of the Records and Registration

## Exhibit 9

### University Employment Profile (CAS, SPGS)

The following table and figures present gender distributions by employment category of full-time Baker University employees for the past ten academic years. Only CAS and SPGS employees are included because SON employees are not included on the regular University payroll. Employment categories include faculty, administrators, and support staff.

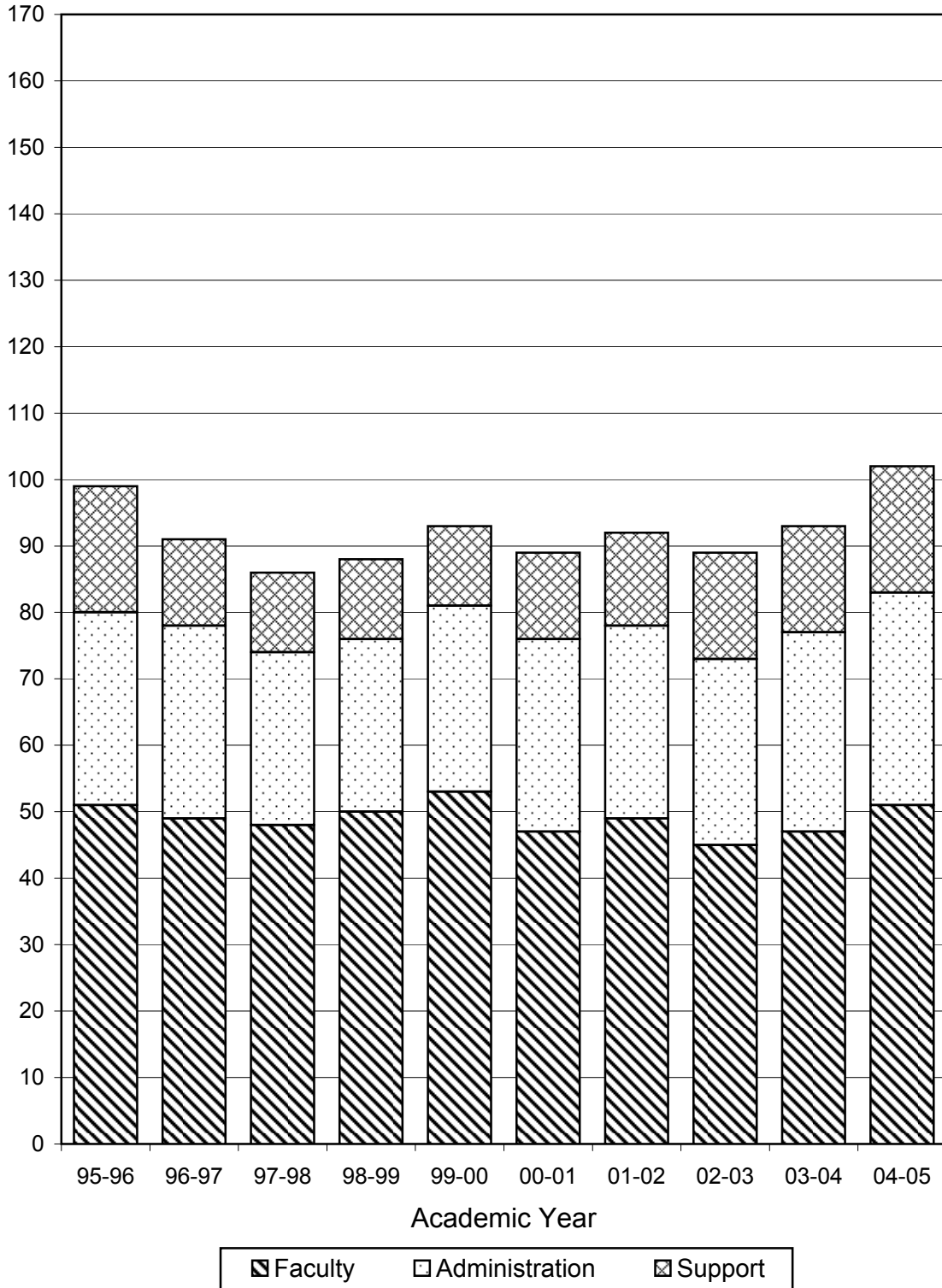
**Table 9**  
**University Employment Profile**  
**Full-Time Employees--CAS & SPGS**  
**1995-2005**

Academic Year	Total			Faculty			Administration			Support		
	TOTAL	Male	Female	TOTAL	Male	Female	TOTAL	Male	Female	TOTAL	Male	Female
1995-96	<b>204</b>	99	105	<b>72</b>	51	21	<b>70</b>	29	41	<b>62</b>	19	43
1996-97	<b>205</b>	91	114	<b>71</b>	49	22	<b>73</b>	29	44	<b>61</b>	13	48
1997-98	<b>202</b>	86	116	<b>72</b>	48	24	<b>73</b>	26	47	<b>57</b>	12	45
1998-99	<b>213</b>	88	125	<b>75</b>	50	25	<b>82</b>	26	56	<b>56</b>	12	44
1999-00	<b>230</b>	93	137	<b>79</b>	53	26	<b>82</b>	28	54	<b>69</b>	12	57
2000-01	<b>231</b>	89	142	<b>81</b>	47	34	<b>86</b>	29	57	<b>64</b>	13	51
2001-02	<b>242</b>	92	150	<b>86</b>	49	37	<b>89</b>	29	60	<b>67</b>	14	53
2002-03	<b>244</b>	89	155	<b>82</b>	45	37	<b>94</b>	28	66	<b>68</b>	16	52
2003-04	<b>254</b>	93	161	<b>81</b>	47	34	<b>103</b>	30	73	<b>70</b>	16	54
2004-05	<b>263</b>	102	161	<b>89</b>	51	38	<b>102</b>	32	70	<b>72</b>	19	53

Source: Office of Human Resources

**Figure 9a**

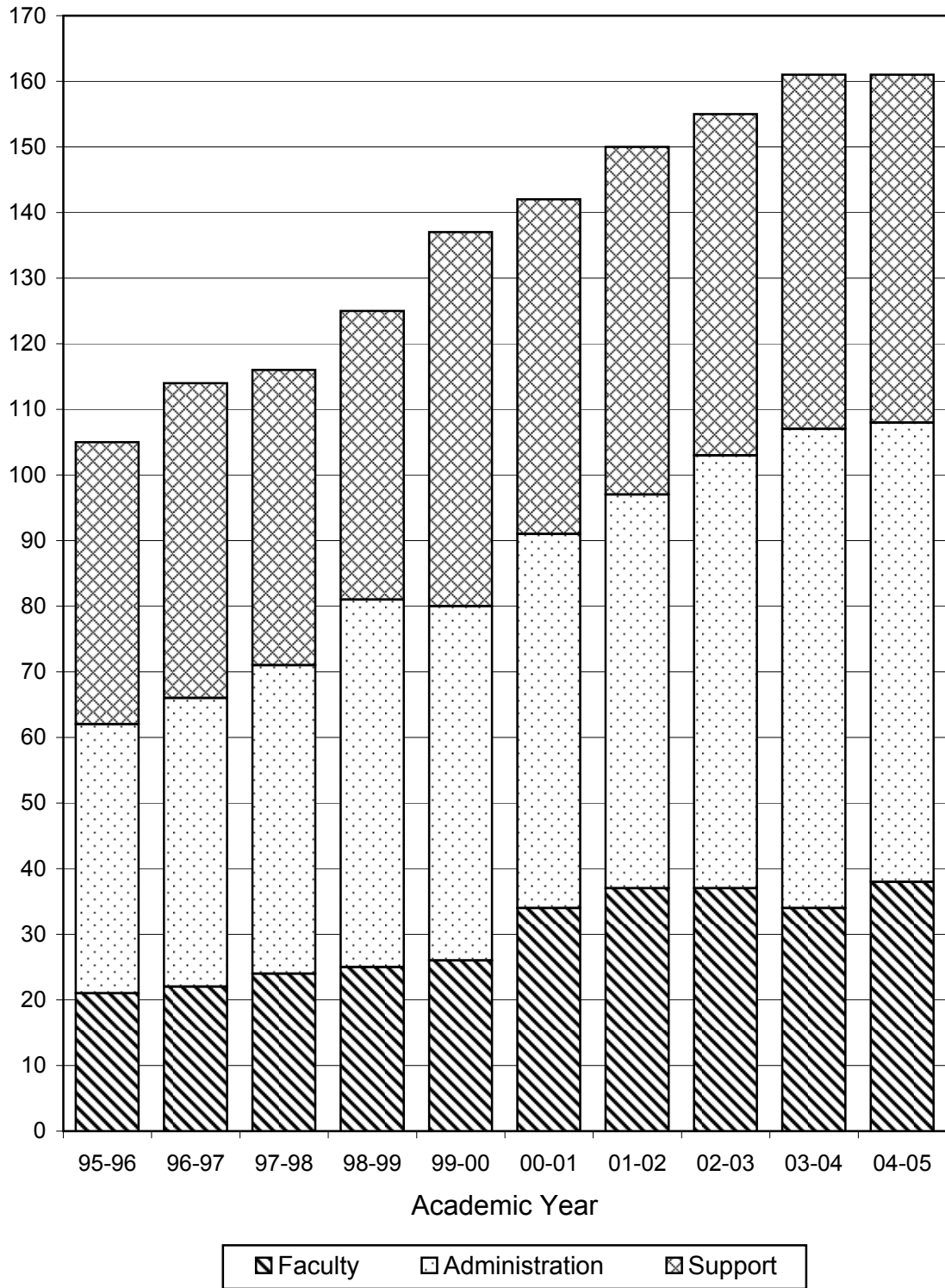
**University Employment Profile  
Full-Time Male Employees**





**Figure 9b**

**University Employment Profile  
Full-Time Female Employees**



## Exhibit 10

### Faculty Profile (CAS, SON, SPGS)

The following tables present a breakdown of full-time teaching faculty by rank and tenure status, as well as an overall count of part-time faculty. Data are presented for CAS, SON, and SPGS for the most recent five-year period. In addition, a composite table (Table 10d) is included, summarizing these data for all three schools.

**Table 10a**

**Number of Faculty by Rank and Tenure Status  
College of Arts and Sciences  
Fall 2000 Through Fall 2004**

Rank (Full Time)	2000				2001				2002				2003				2004			
	T	TT	NT	Tot	T	TT	NT	Tot	T	TT	NT	Tot	T	TT	NT	Tot	T	TT	NT	Tot
Professor	19	1	1	21	20	1	1	22	21	1	1	23	19	0	2	21	21	0	0	21
Associate Professor	11	3	0	14	13	2	0	15	15	1	0	16	17	2	0	19	17	4	0	21
Assistant Professor	3	12	14	29	4	13	12	29	3	10	10	23	3	13	6	22	4	13	3	20
Instructor	0	0	3	3	0	0	4	4	0	0	3	3	0	0	1	1	0	0	0	0
Learning Resources	0	0	6	6	0	0	6	6	0	0	4	4	0	0	4	4	0	0	4	4
Total Full-Time Faculty	33	16	24	73	37	16	23	76	39	12	18	69	39	15	13	67	42	17	7	66
Total Part-Time Faculty	0	0	31	31	0	0	31	31	0	0	38	38	0	0	38	38	0	0	44	44
<b>Grand Total</b>	<b>33</b>	<b>16</b>	<b>55</b>	<b>104</b>	<b>37</b>	<b>16</b>	<b>54</b>	<b>107</b>	<b>39</b>	<b>12</b>	<b>56</b>	<b>107</b>	<b>39</b>	<b>15</b>	<b>51</b>	<b>105</b>	<b>42</b>	<b>17</b>	<b>51</b>	<b>110</b>

Legend: T = Tenured TT = Tenure Track NT = Non-Tenure Track Tot = Total

Source: Office of the CAS Academic Dean

**Table 10b**

**Number of Faculty by Rank and Tenure Status  
School of Nursing  
Fall 2000 Through Fall 2004**

Rank (Full Time)	2000				2001				2002				2003				2004			
	T	TT	NT	Tot	T	TT	NT	Tot	T	TT	NT	Tot	T	TT	NT	Tot	T	TT	NT	Tot
Professor	0	0	0	0	0	0	0	0	0	0	0	0	0	0	0	0	0	0	0	0
Associate Professor	0	0	1	1	0	0	1	1	0	0	1	1	0	0	2	2	0	0	2	2
Assistant Professor	0	0	9	9	0	0	10	10	0	0	9	9	0	0	7	7	0	0	10	10
Instructor	0	0	5	5	0	0	4	4	0	0	4	4	0	0	6	6	0	0	4	4
Learning Resources	0	0	0	0	0	0	0	0	0	0	0	0	0	0	0	0	0	0	0	0
<b>Total Full Time Faculty</b>	<b>0</b>	<b>0</b>	<b>15</b>	<b>15</b>	<b>0</b>	<b>0</b>	<b>15</b>	<b>15</b>	<b>0</b>	<b>0</b>	<b>14</b>	<b>14</b>	<b>0</b>	<b>0</b>	<b>15</b>	<b>15</b>	<b>0</b>	<b>0</b>	<b>16</b>	<b>16</b>
<b>Total Part Time Faculty</b>	<b>0</b>	<b>0</b>	<b>1</b>	<b>1</b>	<b>0</b>	<b>0</b>	<b>1</b>	<b>1</b>	<b>0</b>	<b>0</b>	<b>1</b>	<b>1</b>	<b>0</b>	<b>0</b>	<b>0</b>	<b>0</b>	<b>0</b>	<b>0</b>	<b>0</b>	<b>0</b>
<b>Grand Total</b>	<b>0</b>	<b>0</b>	<b>16</b>	<b>16</b>	<b>0</b>	<b>0</b>	<b>16</b>	<b>16</b>	<b>0</b>	<b>0</b>	<b>15</b>	<b>15</b>	<b>0</b>	<b>0</b>	<b>15</b>	<b>15</b>	<b>0</b>	<b>0</b>	<b>16</b>	<b>16</b>

Legend: T = Tenured TT = Tenure Track NT = Non-Tenure Track Tot = Total

Source: School of Nursing

**Table 10c**

**Number of Faculty by Rank and Tenure Status  
School of Professional and Graduate Studies  
Fall 2000 Through Fall 2004**

Rank (Full Time)	2000				2001				2002				2003				2004			
	T	TT	NT	Tot	T	TT	NT	Tot	T	TT	NT	Tot	T	TT	NT	Tot	T	TT	NT	Tot
Professor	0	0	0	0	0	0	0	0	0	0	0	0	0	0	0	0	0	0	0	0
Associate Professor	0	1	1	2	0	1	1	2	0	1	1	2	0	1	1	2	0	1	2	3
Assistant Professor	0	1	1	2	0	1	1	2	0	0	1	1	0	0	1	1	0	0	0	0
Instructor	0	0	1	1	0	0	1	1	0	0	1	1	0	0	1	1	0	0	1	1
Learning Resources	0	0	0	0	0	0	0	0	0	0	0	0	0	0	0	0	0	0	0	0
Total Full Time Faculty	0	2	3	5	0	2	3	5	0	1	3	4	0	1	3	4	0	1	3	4
Other Full Time Faculty (affiliated with CAS)	8				5				8				5				5			
Total Part Time Faculty (SPGS adjunct faculty)	0	0	187	187	0	0	184	184	0	0	160	160	0	0	170	170	0	0	161	161
<b>Grand Total</b>	<b>0</b>	<b>2</b>	<b>190</b>	<b>200</b>	<b>0</b>	<b>2</b>	<b>187</b>	<b>194</b>	<b>0</b>	<b>1</b>	<b>163</b>	<b>172</b>	<b>0</b>	<b>1</b>	<b>173</b>	<b>179</b>	<b>0</b>	<b>1</b>	<b>164</b>	<b>170</b>

Legend: T = Tenured TT = Tenure Track NT = Non-Tenure Track Tot = Total

Source: SPGS

**Table 10d**

**Summary of all Baker Branches  
(summary of three previous tables)  
Fall 2000 Through Fall 2004**

Rank (Full Time)	2000				2001				2002				2003				2004			
	T	TT	NT	Tot	T	TT	NT	Tot	T	TT	NT	Tot	T	TT	NT	Tot	T	TT	NT	Tot
Professor	19	1	1	21	20	1	1	22	21	1	1	23	19	0	2	21	21	0	0	21
Associate Professor	11	4	2	17	13	3	2	18	15	2	2	19	17	3	3	23	17	5	4	26
Assistant Professor	3	13	24	40	4	14	23	41	3	10	20	33	3	13	14	30	4	13	13	30
Instructor	0	0	9	9	0	0	9	9	0	0	8	8	0	0	8	8	0	0	5	5
Learning Resources	0	0	6	6	0	0	6	6	0	0	4	4	0	0	4	4	0	0	4	4
Total Full Time Faculty	33	18	42	93	37	18	41	96	39	13	35	87	39	16	31	86	42	18	26	86
Total Part Time Faculty	0	0	219	219	0	0	216	216	0	0	199	199	0	0	198	198	0	0	208	208
<b>Grand Total</b>	<b>33</b>	<b>18</b>	<b>261</b>	<b>312</b>	<b>37</b>	<b>18</b>	<b>257</b>	<b>312</b>	<b>39</b>	<b>13</b>	<b>234</b>	<b>286</b>	<b>39</b>	<b>16</b>	<b>229</b>	<b>284</b>	<b>42</b>	<b>18</b>	<b>234</b>	<b>294</b>

Legend: T = Tenured TT = Tenure Track NT = Non-Tenure Track Tot = Total

Source: Office of Institutional Research

## Exhibit 11

### Departmental Credit-Hour Production (CAS)

Table 11 (actually, a set of tables) presents a semester-by-semester report of departmental credit hour load production at CAS for the past ten academic years.

Included are:

- 1) the number of credit hours produced by each department (or program) per semester and per academic year
- 2) the faculty FTE (full-time equivalent based on a 12-hour teaching load) for each department/program per semester and per academic year
- 3) the number of credit hours produced per FTE faculty member by each department/program per semester and per academic year
- 4) the percent increase or decrease from the preceding year in both total credit hours produced and credit hours produced per FTE faculty for each department/program per academic year
- 5) the University rank in both total credit hours produced and credit hours produced per FTE faculty for each department/program per academic year
- 6) 10-year averages for each of the above

**Table 11**  
**Departmental Credit Hours Per FTE Faculty**  
**Ten-Year Period 1995-2005 (CAS only)**

**DEPARTMENT OF ART**

ACADEMIC YEAR	FALL			SPRING			YEAR					
	Total CrHrs	Fac FTE	CrHrs /Fac	Total CrHrs	Fac FTE	CrHrs /Fac	Total CrHrs	Pct Change	Univ Rank	CrHrs /Fac	Pct Change	Univ Rank
1995-1996	621	3.33	186	605	3.83	158	1226	19%	10	344	-5%	10
1996-1997	524	3.33	157	546	3.08	177	1070	-13%	12	334	-3%	11
1997-1998	637	3.83	166	701	3.83	183	1338	25%	9	349	4%	10
1998-1999	492	3.50	141	522	3.00	174	1014	-24%	12	315	-10%	10
1999-2000	512	3.00	171	639	3.25	197	1151	14%	9	367	17%	8
2000-2001	699	4.25	164	672	3.50	192	1371	19%	7	356	-3%	9
2001-2002	599	3.50	171	754	3.50	215	1353	-1%	11	387	8%	8
2002-2003	573	3.50	164	536	3.50	153	1109	-18%	13	317	-18%	10
2003-2004	549	3.25	169	597	3.33	179	1146	3%	13	348	10%	10
2004-2005	544	3.25	167	384	3.50	110	928	-19%	13	277	-20%	12
<b>AVERAGE</b>	<b>575</b>	<b>3.47</b>	<b>166</b>	<b>609</b>	<b>3.37</b>	<b>181</b>	<b>1171</b>		<b>12</b>	<b>340</b>		<b>10</b>

**DEPARTMENT OF BIOLOGY, ALLIED HEALTH SCIENCES, AND ENVIRONMENTAL SCIENCES**  
(separate prior to 2000-2001)

ACADEMIC YEAR	FALL			SPRING			YEAR					
	Total CrHrs	Fac FTE	CrHrs /Fac	Total CrHrs	Fac FTE	CrHrs /Fac	Total CrHrs	Pct Change	Univ Rank	CrHrs /Fac	Pct Change	Univ Rank
1995-1996	837	3.25	258	790	3.33	237	1627	-11%	6	495	-14%	2
1996-1997	906	3.58	253	844	3.75	225	1750	8%	5	478	-3%	2
1997-1998	1029	4.58	225	841	4.00	210	1870	7%	4	435	-9%	4
1998-1999	988	3.92	252	845	3.75	225	1833	-2%	5	477	10%	2
1999-2000	989	4.17	237	686	3.50	196	1675	-9%	5	433	-9%	3
2000-2001	724	2.92	248	572	2.83	202	1296	-23%	8	450	4%	3
2001-2002	1165	4.50	259	581	2.83	205	1746	35%	7	464	3%	5
2002-2003	1059	3.42	310	709	3.17	224	1768	1%	6	533	15%	1
2003-2004	1115	4.42	252	699	3.42	204	1814	3%	6	457	-14%	4
2004-2005	998	4.50	222	889	4.50	198	1887	4%	4	419	-8%	7
<b>AVERAGE</b>	<b>981</b>	<b>3.93</b>	<b>252</b>	<b>746</b>	<b>3.51</b>	<b>213</b>	<b>1727</b>		<b>6</b>	<b>464</b>		<b>3</b>

**DEPARTMENT OF BUSINESS AND ECONOMICS**

ACADEMIC YEAR	FALL			SPRING			YEAR					
	Total CrHrs	Fac FTE	CrHrs /Fac	Total CrHrs	Fac FTE	CrHrs /Fac	Total CrHrs	Pct Change	Univ Rank	CrHrs /Fac	Pct Change	Univ Rank
1995-1996	1578	5.50	287	1446	6.00	241	3024	8%	1	528	17%	1
1996-1997	1620	5.83	278	1488	6.25	238	3108	3%	1	516	-2%	1
1997-1998	1497	5.00	299	1444	6.00	241	2941	-5%	1	540	5%	1
1998-1999	1626	5.50	296	1398	5.75	243	3024	3%	1	539	0%	1
1999-2000	1563	5.25	298	1377	5.25	262	2940	-3%	1	560	4%	1
2000-2001	1584	5.50	288	1575	6.00	263	3159	7%	1	551	-2%	1
2001-2002	1593	5.25	303	1392	5.75	242	2985	-6%	1	546	-1%	2
2002-2003	1632	5.75	284	1351	5.50	246	2983	0%	2	529	-3%	3
2003-2004	1506	6.25	241	1299	6.50	200	2805	-6%	2	441	-17%	5
2004-2005	1353	5.50	246	1500	5.83	257	2853	2%	1	503	14%	1
<b>AVERAGE</b>	<b>1555</b>	<b>5.53</b>	<b>282</b>	<b>1427</b>	<b>5.88</b>	<b>243</b>	<b>2982</b>		<b>1</b>	<b>525</b>		<b>1</b>

**DEPARTMENT OF CHEMISTRY**

ACADEMIC YEAR	FALL			SPRING			YEAR					
	Total CrHrs	Fac FTE	CrHrs /Fac	Total CrHrs	Fac FTE	CrHrs /Fac	Total CrHrs	Pct Change	Univ Rank	CrHrs /Fac	Pct Change	Univ Rank
1995-1996	255	1.83	139	360	1.92	188	615	7%	15	327	8%	12
1996-1997	429	2.08	206	318	1.92	166	747	21%	15	372	14%	8
1997-1998	254	1.75	145	329	2.00	165	583	-22%	15	310	-17%	12
1998-1999	255	1.83	139	331	2.00	166	586	1%	15	305	-2%	12
1999-2000	197	1.50	131	287	1.50	191	484	-17%	15	323	6%	10
2000-2001	219	1.92	114	267	1.92	139	486	0%	15	253	-22%	13
2001-2002	234	1.92	122	309	1.83	169	543	12%	15	291	15%	13
2002-2003	264	2.00	132	314	1.83	172	578	6%	14	304	4%	11
2003-2004	272	1.92	142	333	2.00	167	605	5%	14	308	2%	12
2004-2005	185	2.42	77	276	2.00	138	461	-24%	14	215	-30%	13
<b>AVERAGE</b>	<b>256</b>	<b>1.92</b>	<b>135</b>	<b>312</b>	<b>1.89</b>	<b>166</b>	<b>569</b>		<b>14</b>	<b>301</b>		<b>12</b>



**DEPARTMENT OF COMMUNICATION AND THEATRE ARTS**  
(separate prior to 1996-1997; separate again after 2003-2004)

ACADEMIC YEAR	FALL			SPRING			YEAR					
	Total CrHrs	Fac FTE	CrHrs /Fac	Total CrHrs	Fac FTE	CrHrs /Fac	Total CrHrs	Pct Change	Univ Rank	CrHrs /Fac	Pct Change	Univ Rank
1995-1996	705	5.42	130	605	4.42	137	1310	0%	9	267	7%	13
1996-1997	688	5.33	129	608	5.25	116	1296	-1%	9	245	-8%	13
1997-1998	696	5.08	137	725	5.25	138	1421	10%	7	275	12%	13
1998-1999	775	5.67	137	777	4.50	173	1552	9%	8	309	12%	11
1999-2000	783	6.25	125	694	4.59	151	1477	-5%	7	276	-11%	13
2000-2001	865	5.67	153	748	5.83	128	1613	9%	5	281	2%	12
2001-2002	1131	6.17	183	914	6.00	152	2045	27%	4	336	20%	12
2002-2003	917	6.33	145	855	6.00	143	1772	-13%	5	287	-14%	12
2003-2004	949	6.17	154	941	5.75	164	1890	7%	5	317	10%	11
AVERAGE	834	5.79	144	763	5.29	145	1597		n/a	288		n/a

**DEPARTMENT OF COMMUNICATION (separate from Theatre Arts starting 2004-2005)**

ACADEMIC YEAR	FALL			SPRING			YEAR					
	Total CrHrs	Fac FTE	CrHrs /Fac	Total CrHrs	Fac FTE	CrHrs /Fac	Total CrHrs	Pct Change	Univ Rank	CrHrs /Fac	Pct Change	Univ Rank
2004-2005	863	5.58	155	662	3.75	177	1525	n/a	9	331	n/a	9
AVERAGE	863	5.58	155	662	3.75	177	1525		8	331		11

**DEPARTMENT OF EDUCATION**

ACADEMIC YEAR	FALL			SPRING			YEAR					
	Total CrHrs	Fac FTE	CrHrs /Fac	Total CrHrs	Fac FTE	CrHrs /Fac	Total CrHrs	Pct Change	Univ Rank	CrHrs /Fac	Pct Change	Univ Rank
1995-1996	786	3.60	218	672	3.75	179	1458	-14%	7	398	-5%	9
1996-1997	838	4.35	193	791	4.39	180	1629	12%	6	373	-6%	7
1997-1998	688	3.33	207	699	3.75	186	1387	-15%	8	393	5%	7
1998-1999	879	4.65	189	681	4.15	164	1560	12%	7	353	-10%	9
1999-2000	742	4.80	155	774	4.65	166	1516	-3%	6	321	-9%	11
2000-2001	648	4.40	147	621	3.90	159	1269	-16%	9	307	-5%	11
2001-2002	777	4.20	185	606	3.80	159	1383	9%	8	344	12%	11
2002-2003	741	4.37	170	748	3.98	188	1489	8%	10	358	4%	8
2003-2004	893	4.68	191	777	3.73	208	1670	12%	8	399	12%	7
2004-2005	975	4.39	222	824	3.92	210	1799	8%	6	433	8%	6
AVERAGE	797	4.28	188	719	4.00	180	1516		9	368		8

**DEPARTMENT OF ENGLISH (prior to 2002-2003)**

ACADEMIC YEAR	FALL			SPRING			YEAR					
	Total CrHrs	Fac FTE	CrHrs /Fac	Total CrHrs	Fac FTE	CrHrs /Fac	Total CrHrs	Pct Change	Univ Rank	CrHrs /Fac	Pct Change	Univ Rank
1995-1996	757	3.83	198	432	3.00	144	1189	8%	11	342	12%	11
1996-1997	741	4.42	168	526	3.33	158	1267	7%	10	325	-5%	12
1997-1998	674	3.92	172	591	3.67	161	1265	0%	10	333	2%	11
1998-1999	694	4.25	163	504	3.33	151	1198	-5%	10	315	-6%	10
1999-2000	558	3.75	149	531	3.00	177	1089	-9%	11	326	4%	9
2000-2001	600	4.00	150	507	2.92	174	1107	2%	13	324	-1%	10
2001-2002	770	3.75	205	605	3.42	177	1375	24%	9	382	18%	9
AVERAGE	685	3.99	172	528	3.24	163	1213		n/a	335		n/a

**DEPARTMENT OF FOREIGN LANGUAGE (prior to 2002-2003)**

ACADEMIC YEAR	FALL			SPRING			YEAR					
	Total CrHrs	Fac FTE	CrHrs /Fac	Total CrHrs	Fac FTE	CrHrs /Fac	Total CrHrs	Pct Change	Univ Rank	CrHrs /Fac	Pct Change	Univ Rank
1995-1996	477	4.42	108	168	2.75	61	645	-23%	14	169	-30%	15
1996-1997	422	3.67	115	389	3.25	120	811	26%	14	235	39%	14
1997-1998	423	3.67	115	304	3.42	89	727	-10%	14	204	-13%	15
1998-1999	511	4.42	116	354	3.33	106	865	19%	14	222	9%	13
1999-2000	496	3.83	130	341	3.58	95	837	-3%	14	225	1%	14
2000-2001	427	3.83	111	285	3.75	76	712	-15%	14	187	-17%	15
2001-2002	486	4.08	119	319	3.58	89	805	13%	14	208	11%	14
AVERAGE	463	3.99	116	309	3.38	91	772		n/a	207		n/a

**FIRST-YEAR EXPERIENCE PROGRAM**

ACADEMIC YEAR	FALL			SPRING			YEAR					
	Total CrHrs	Fac FTE	CrHrs /Fac	Total CrHrs	Fac FTE	CrHrs /Fac	Total CrHrs	Pct Change	Univ Rank	CrHrs /Fac	Pct Change	Univ Rank
1995-1996	217	1.17	185	0	0.00	0	217	n/a	16	185	n/a	14
1996-1997	180	1.17	154	3	0.08	36	183	-16%	16	190	2%	15
1997-1998	224	1.17	191	2	0.08	24	226	23%	16	215	13%	14
1998-1999	200	1.25	160	0	0.00	0	200	-12%	16	160	-26%	14
1999-2000	187	1.25	150	6	0.08	75	193	-4%	16	225	40%	14
2000-2001	216	1.33	162	3	0.08	38	219	13%	16	200	-11%	14
2001-2002	222	1.42	156	2	0.08	25	224	2%	16	181	-9%	15
2002-2003	222	1.50	148	3	0.08	38	225	0%	15	186	2%	14
2003-2004	213	1.33	160	1	0.08	13	214	-5%	15	173	-7%	15
2004-2005	216	1.50	144	6	0.17	36	222	4%	16	180	4%	14
<b>AVERAGE</b>	<b>210</b>	<b>1.31</b>	<b>161</b>	<b>3</b>	<b>0.07</b>	<b>28</b>	<b>212</b>		<b>16</b>	<b>189</b>		<b>14</b>

**DEPARTMENT OF HISTORY, POLITICAL SCIENCE AND SOCIOLOGY (separate prior to 1998-1999)**

ACADEMIC YEAR	FALL			SPRING			YEAR					
	Total CrHrs	Fac FTE	CrHrs /Fac	Total CrHrs	Fac FTE	CrHrs /Fac	Total CrHrs	Pct Change	Univ Rank	CrHrs /Fac	Pct Change	Univ Rank
1995-1996	1020	5.25	194	1251	6.00	209	2271	-12%	4	403	-5%	7
1996-1997	1094	5.50	199	1188	5.25	226	2282	0%	3	425	6%	5
1997-1998	1101	5.50	200	1218	5.00	244	2319	2%	3	444	4%	3
1998-1999	1203	5.75	209	1449	5.75	252	2652	14%	2	461	4%	4
1999-2000	1194	5.75	208	1098	5.00	220	2292	-14%	3	427	-7%	5
2000-2001	1194	6.00	199	1143	5.25	218	2337	2%	3	417	-2%	5
2001-2002	1505	6.25	241	1326	5.75	231	2831	21%	3	471	13%	4
2002-2003	1347	5.75	234	1204	5.50	219	2551	-10%	3	453	-4%	4
2003-2004	1413	5.75	246	1080	4.75	227	2493	-2%	3	473	4%	2
2004-2005	1176	6.00	196	1308	5.50	238	2484	0%	3	434	-8%	5
<b>AVERAGE</b>	<b>1225</b>	<b>5.75</b>	<b>213</b>	<b>1227</b>	<b>5.38</b>	<b>228</b>	<b>2451</b>		<b>3</b>	<b>441</b>		<b>5</b>

**DEPARTMENT OF LANGUAGE AND LITERATURE (combined starting in 2002-2003)**

ACADEMIC YEAR	FALL			SPRING			YEAR					
	Total CrHrs	Fac FTE	CrHrs /Fac	Total CrHrs	Fac FTE	CrHrs /Fac	Total CrHrs	Pct Change	Univ Rank	CrHrs /Fac	Pct Change	Univ Rank
2002-2003	1252	8.75	143	1057	7.42	143	2309	6%	4	286	-3%	13
2003-2004	1177	7.83	150	859	6.83	126	2036	-12%	4	276	-3%	13
2004-2005	1045	7.08	148	834	6.08	137	1879	-8%	5	285	3%	11
<b>AVERAGE</b>	<b>1158</b>	<b>7.89</b>	<b>147</b>	<b>917</b>	<b>6.78</b>	<b>135</b>	<b>2075</b>		<b>4</b>	<b>282</b>		<b>13</b>

**LIBERAL ARTS PROGRAM**

ACADEMIC YEAR	FALL			SPRING			YEAR					
	Total CrHrs	Fac FTE	CrHrs /Fac	Total CrHrs	Fac FTE	CrHrs /Fac	Total CrHrs	Pct Change	Univ Rank	CrHrs /Fac	Pct Change	Univ Rank
1995-1996	954	4.50	212	786	3.75	210	1740	0%	5	422	-1%	6
1996-1997	927	4.25	218	696	3.75	186	1623	-7%	7	404	-4%	6
1997-1998	915	3.75	244	762	3.75	203	1677	3%	6	447	11%	2
1998-1999	789	3.75	210	786	3.75	210	1575	-6%	6	420	-6%	5
1999-2000	726	3.25	223	717	3.50	205	1443	-8%	8	428	2%	4
2000-2001	969	4.25	228	762	3.75	203	1731	20%	4	431	1%	4
2001-2002	1041	4.83	215	813	4.08	199	1854	7%	5	415	-4%	7
2002-2003	778	3.58	217	753	3.75	201	1531	-17%	8	418	1%	6
2003-2004	945	4.25	222	720	3.50	206	1665	9%	9	428	2%	6
2004-2005	851	3.83	222	784	3.58	219	1635	-2%	8	441	3%	3
<b>AVERAGE</b>	<b>890</b>	<b>4.02</b>	<b>221</b>	<b>758</b>	<b>3.72</b>	<b>204</b>	<b>1647</b>		<b>7</b>	<b>425</b>		<b>6</b>

**DEPARTMENT OF MATHEMATICS, COMPUTER SCIENCES AND PHYSICS (separate prior to 2000-2001)**

ACADEMIC YEAR	FALL			SPRING			YEAR					
	Total CrHrs	Fac FTE	CrHrs /Fac	Total CrHrs	Fac FTE	CrHrs /Fac	Total CrHrs	Pct Change	Univ Rank	CrHrs /Fac	Pct Change	Univ Rank
1995-1996	1365	6.08	225	1156	6.50	178	2521	-4%	2	402	8%	8
1996-1997	1459	7.50	195	1008	5.92	170	2467	-2%	2	365	-9%	9
1997-1998	1561	7.92	197	1244	7.58	164	2805	14%	2	361	-1%	9
1998-1999	1412	7.17	197	1099	6.50	169	2511	-10%	3	366	1%	7
1999-2000	1357	7.42	183	1436	7.33	196	2793	11%	2	379	3%	7
2000-2001	1663	8.75	190	1403	7.42	189	3066	10%	2	379	0%	7
2001-2002	1567	6.67	235	1360	7.00	194	2927	-5%	2	429	13%	6
2002-2003	1680	8.42	200	1495	7.58	197	3175	8%	1	397	-8%	7
2003-2004	1473	7.33	201	1428	8.17	175	2901	-9%	1	376	-5%	8
2004-2005	1399	7.67	182	1128	7.17	157	2527	-13%	2	340	-10%	8
<b>AVERAGE</b>	<b>1494</b>	<b>7.49</b>	<b>200</b>	<b>1276</b>	<b>7.12</b>	<b>179</b>	<b>2769</b>		<b>2</b>	<b>379</b>		<b>7</b>

**DEPARTMENT OF MUSIC**

ACADEMIC YEAR	FALL			SPRING			YEAR					
	Total CrHrs	Fac FTE	CrHrs /Fac	Total CrHrs	Fac FTE	CrHrs /Fac	Total CrHrs	Pct Change	Univ Rank	CrHrs /Fac	Pct Change	Univ Rank
1995-1996	484	7.33	66	443	7.39	60	927	1%	13	126	-14%	16
1996-1997	529	8.95	59	467	6.91	68	996	7%	13	127	1%	16
1997-1998	566	7.43	76	526	8.47	62	1092	10%	12	138	9%	16
1998-1999	464	7.46	62	592	7.76	76	1056	-3%	11	138	0%	15
1999-2000	432	6.70	64	569	7.07	80	1001	-5%	12	145	5%	15
2000-2001	529	8.92	59	621	8.64	72	1150	15%	12	131	-10%	16
2001-2002	665	11.14	60	707	10.88	65	1372	19%	10	125	-5%	16
2002-2003	719	9.27	78	807	8.89	91	1526	11%	9	168	35%	15
2003-2004	694	8.82	79	754	7.94	95	1448	-5%	10	174	3%	14
2004-2005	797	9.93	80	883	10.07	88	1680	16%	7	168	-3%	16
<b>AVERAGE</b>	<b>588</b>	<b>8.59</b>	<b>68</b>	<b>637</b>	<b>8.40</b>	<b>76</b>	<b>1225</b>		<b>11</b>	<b>144</b>		<b>16</b>

**DEPARTMENT OF PHILOSOPHY AND RELIGION**

ACADEMIC YEAR	FALL			SPRING			YEAR					
	Total CrHrs	Fac FTE	CrHrs /Fac	Total CrHrs	Fac FTE	CrHrs /Fac	Total CrHrs	Pct Change	Univ Rank	CrHrs /Fac	Pct Change	Univ Rank
1995-1996	573	2.50	229	431	1.83	236	1004	-7%	12	465	8%	3
1996-1997	513	2.50	205	667	2.75	243	1180	18%	11	448	-4%	3
1997-1998	498	2.25	221	348	2.00	174	846	-28%	13	395	-12%	6
1998-1999	531	2.25	236	399	1.75	228	930	10%	13	464	17%	3
1999-2000	498	2.25	221	402	2.25	179	900	-3%	13	400	-14%	6
2000-2001	558	2.50	223	666	2.50	266	1224	36%	10	490	22%	2
2001-2002	330	1.00	330	714	2.25	317	1044	-15%	13	647	32%	1
2002-2003	585	2.50	234	591	2.00	296	1176	13%	12	530	-18%	2
2003-2004	627	2.50	251	630	2.25	280	1257	7%	11	531	0%	1
2004-2005	555	2.50	222	628	2.50	251	1183	-6%	12	473	-11%	2
<b>AVERAGE</b>	<b>527</b>	<b>2.28</b>	<b>237</b>	<b>548</b>	<b>2.21</b>	<b>247</b>	<b>1074</b>		<b>13</b>	<b>484</b>		<b>2</b>

**DEPARTMENT OF PHYSICAL EDUCATION**

ACADEMIC YEAR	FALL			SPRING			YEAR					
	Total CrHrs	Fac FTE	CrHrs /Fac	Total CrHrs	Fac FTE	CrHrs /Fac	Total CrHrs	Pct Change	Univ Rank	CrHrs /Fac	Pct Change	Univ Rank
1995-1996	1203	5.00	241	1223	5.50	222	2426	0%	3	463	-4%	4
1996-1997	865	4.58	189	889	5.25	169	1754	-28%	4	358	-23%	10
1997-1998	888	4.75	187	886	4.83	183	1774	1%	5	370	3%	8
1998-1999	910	4.92	185	945	5.25	180	1855	5%	4	365	-1%	8
1999-2000	899	5.50	163	840	5.42	155	1739	-6%	4	318	-13%	12
2000-2001	648	3.33	195	878	4.83	182	1526	-12%	6	376	18%	8
2001-2002	939	4.92	191	812	4.92	165	1751	15%	6	356	-5%	10
2002-2003	903	5.08	178	730	4.58	159	1633	-7%	7	337	-5%	9
2003-2004	889	4.92	181	839	4.75	177	1728	6%	7	357	6%	9
2004-2005	762	5.08	150	724	4.42	164	1486	-14%	10	314	-12%	10
<b>AVERAGE</b>	<b>891</b>	<b>4.81</b>	<b>186</b>	<b>877</b>	<b>4.97</b>	<b>176</b>	<b>1767</b>		<b>5</b>	<b>362</b>		<b>9</b>

**DEPARTMENT OF PSYCHOLOGY**

ACADEMIC YEAR	FALL			SPRING			YEAR					
	Total CrHrs	Fac FTE	CrHrs /Fac	Total CrHrs	Fac FTE	CrHrs /Fac	Total CrHrs	Pct Change	Univ Rank	CrHrs /Fac	Pct Change	Univ Rank
1995-1996	689	2.92	236	688	3.25	212	1377	-8%	8	448	-15%	5
1996-1997	616	2.92	211	786	3.50	225	1402	2%	8	436	-3%	4
1997-1998	583	2.83	206	632	2.92	216	1215	-13%	11	422	-3%	5
1998-1999	567	3.00	189	670	3.17	211	1237	2%	9	400	-5%	6
1999-2000	509	2.33	218	622	2.42	257	1131	-9%	10	475	19%	2
2000-2001	520	2.67	195	639	2.92	219	1159	2%	11	414	-13%	6
2001-2002	618	2.33	265	568	2.67	213	1186	2%	12	478	16%	3
2002-2003	702	3.00	234	670	3.17	211	1372	16%	11	445	-7%	5
2003-2004	558	2.08	268	647	3.17	204	1205	-12%	12	472	6%	3
2004-2005	696	3.08	226	673	3.17	213	1369	14%	11	438	-7%	4
<b>AVERAGE</b>	<b>606</b>	<b>2.72</b>	<b>225</b>	<b>660</b>	<b>3.04</b>	<b>218</b>	<b>1265</b>		<b>10</b>	<b>443</b>		<b>4</b>

**DEPARTMENT OF THEATRE ARTS (separate from Communication starting 2004-2005)**

ACADEMIC YEAR	FALL			SPRING			YEAR					
	Total CrHrs	Fac FTE	CrHrs /Fac	Total CrHrs	Fac FTE	CrHrs /Fac	Total CrHrs	Pct Change	Univ Rank	CrHrs /Fac	Pct Change	Univ Rank
2004-2005	146	1.50	97	133	1.67	80	279	n/a	15	177	n/a	15
<b>AVERAGE</b>	<b>146</b>	<b>1.50</b>	<b>97</b>	<b>133</b>	<b>1.67</b>	<b>80</b>	<b>279</b>		<b>15</b>	<b>177</b>		<b>15</b>

Sources: Office Records and Registration  
Office of Institutional Research