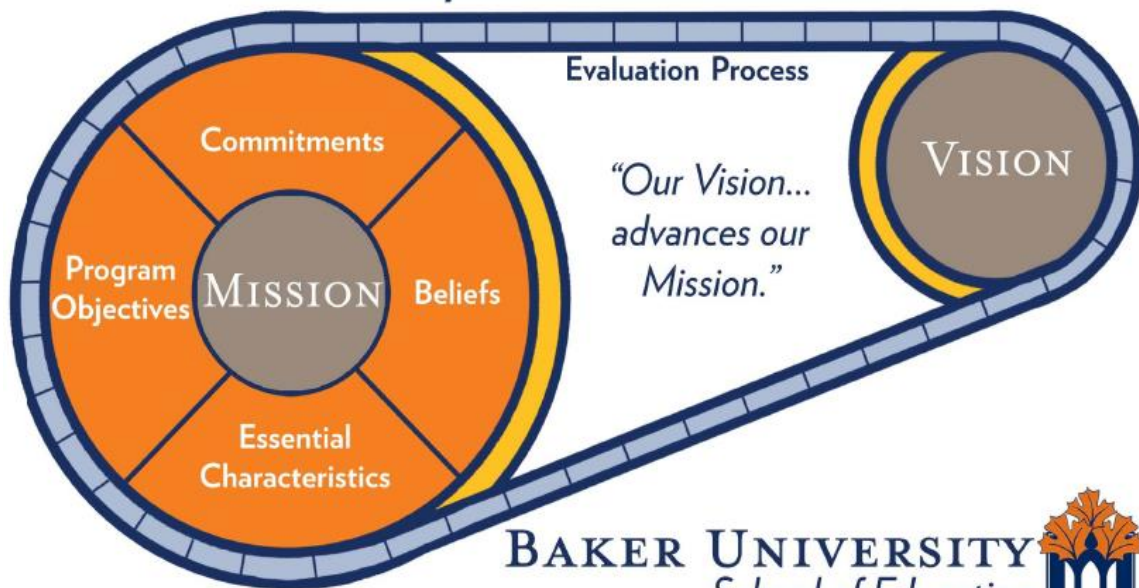


BAKER UNIVERSITY

TEACHER EDUCATION POLICY AND PROGRAMS HANDBOOK AE (TEPPH-AE)

2015-2016

MODEL OF THE SCHOOL OF EDUCATION *Conceptual Framework*



BAKER UNIVERSITY
School of Education



SOE Mission:

The Baker University School of Education is committed to learning and to developing confident and competent educational leaders.

BAKER UNIVERSITY TEACHER EDUCATION POLICY AND PROGRAMS HANDBOOK AE

BU TEPPH Handbook AE version was edited and updated by department members in August 2015.

2015-2016

PREFACE

This Handbook--the TEPPH

The Teacher Education Policy and Programs Handbook (TEPPH) serves as the official document governing six majors in education. It supplements the catalog as an additional primary document for students seeking teacher licensure. The TEPPH outlines the SOE undergraduate department's conceptual framework, requirements, policies and procedures, and coursework required for licensure. This document is available through the SOE undergraduate department, online, and is distributed to all teacher education candidates upon application to the program.

Accreditation

Baker University's SOE programs are accredited by the National Council for Accreditation of Teacher Education (NCATE) and the Kansas State Department of Education (KSDE).

Mission Statement

Our mission: *The Baker University School of Education is committed to learning and to developing confident and competent educational leaders.* This mission statement is one of the seven components of the Conceptual Framework, which is located later in the handbook in complete form.

TABLE OF CONTENTS

Baker University Teacher Education Policy and Programs Handbook AE

Preface	2
Table of Contents.....	3
Section I Course Requirements	4
Section II Endorsement Areas	6
Section III Admission to and Retention in the Teacher Education Program	24
Section IV Pre-Licensure Testing.....	31
Section V Professional Field Experiences.....	33
Section VI The Student Teaching Semester	36
Section VII Procedures for Obtaining Teacher Licensure	38
Section VIII Non-Traditional Pathways to Education.....	40
Section IX Conceptual Framework	42
Section X Governance	50
Section XI Appendices	53
Appendix A - Matrix Associating Program Objectives to Courses.....	54
Appendix B - Governance Structure for the School of Education	55
Appendix C - Student Teacher Evaluation Forms.....	56
Appendix D - Graduate Reflection Form	60
Appendix E - Graduate Evaluation Form	61
Appendix F - Personal and Professional Skills Survey	62
Appendix G – Undergraduate Dispositions.....	63
Appendix H – Kansas Educator Code of Conduct	64
Appendix I - Recommended Strategies and Best Practices.....	65
Appendix J – Academic and Professional Misconduct	67
Appendix K - Technology Expectations.....	68
Appendix L - Community Service.....	69
Appendix M - Plan for Addressing Concerns Regarding Candidate Status	71
Appendix N - Criteria for Admission to Student Teaching.....	72
Appendix O - Licensure Requirements.... Previously Earned a Degree.....	73
Appendix P – Attendance Policy.....	74
Appendix Q - Frequently Asked Questions	76
Appendix R – Felony Disclosure Form	77
Appendix S – (New) Admission to the Teacher Education Program	79
Appendix T – (New) KS Licensure Standards for Professional Education	81
Appendix U – Glossary of Terms	91
Appendix V- Bibliography of Pedagogical Knowledge.....	94

SECTION I COURSE REQUIREMENTS

Professional Education Courses

All teacher education candidates must take the following professional education courses. In addition, all education candidates must complete the courses listed on the appropriate endorsement pages listed under Section II. Keep in mind that all licensed teachers must also have a college degree from Baker University or elsewhere. Earning a degree at Baker University will include a major, which also has required courses. You must work closely with an advisor or advisors to successfully complete your professional education requirements, your major requirements and teacher licensure requirements in addition to the general education requirements.

Required Professional Education Courses

ED 100	Teaching as a Career (first semester freshman or above)	1 hour	F/SP
ED 243	Introduction to Education	2 hours	F/SP

A student who has successfully completed ED 100 and ED 243 may enroll in the following courses.

ED 244	Education Field Practicum I	1 hour	F/SP
ED 264	Foundations of Classroom Management	1 hour	F/SP
ED 265	Technology for Teachers	1 hour	F/SP
ED 309	Evaluation Techniques for the Classroom	3 hours	F/SP
ED 313	Bilingual Education	3 hours	F/SP
ED 320	Education Field Service Practicum II (BME candidates meet this requirement through music education courses.)	1 hour	F/SP
ED 343	Educational Psychology	3 hours	F/SP
ED 345	Psychology of the Exceptional Learner	3 hours	F/SP
ED 366	Teaching Elementary Language Arts in the Content Areas OR	3 hours	F
ED 368	Teaching Reading in the Secondary Content Areas	3 hours	SP
IS 199	Diversity in Education Interterm (juniors or seniors)	3 hours	January
ED 462*	Education Orientation Internship	1 hour	F
ED 440**	Pre-Student Teaching Seminar for Elementary Majors OR	3 hours	F/SP
ED 460**	Pre-Student Teaching Seminar for Sec. and/or Middle Level Majors		
Supporting courses:			
PY 111	General Psychology	3 hours	F/SP
PY 243	Human Development	3 hour	F/SP/SU
CO 115	Oral Communication	3 hours	F/SP

* Must be taken in the fall of the academic year of student teaching

**Must be taken in the semester prior to student teaching

A candidate must complete all requirements to be approved for student teaching. During the student teaching semester, candidates enroll in the following course(s) that are required for your particular program.

ED 450	Student Teaching in the Elementary or Middle School OR	12 hours	F/SP
ED 470	Student Teaching at the Secondary and/or Middle Level OR		
ED 480	Middle Level Student Teaching		

Candidates in a PreK-12 program take 6 hours each of ED 450 and ED 470.

Total Professional Education Hours: 48 hours

General Education Requirements

All persons who earn degrees from Baker University must meet Baker University's general graduation requirements. If ED 100 is taken in a year that differs from the official catalog year, graduation requirements will align with the catalog year and teacher education requirements will align with the applicable TEPPH. These two years may differ.

Persons who hold a degree from an accredited institution and are seeking teacher licensure from Baker University must satisfy the licensure requirements specified in Appendix O.

Majors Offered by the Undergraduate School of Education

Listing of Majors

The Undergraduate School of Education offers six majors:

1. Elementary Education
2. Health
3. Middle Level English
4. Middle Level Mathematics
5. Physical Education
6. Secondary Education

Requirements for Elementary, Health, Middle Level Majors and Physical Education Majors

The major requirements for candidate majoring in 1) elementary education, 2) health, 3) middle level English, 4) middle level mathematics, or 5) physical education would be those in the TEPPH from the year the candidate successfully completed ED 100. The practical application of this ruling means that a candidate could be in a catalog from a year either before or after the TEPPH year of record. Thus a candidate might need to meet the general education and graduation requirements from a catalog year that might differ from the major requirements as defined in the TEPPH from another year.

Required Double Major for Secondary Education Candidates

Candidates who desire to teach in secondary schools will earn a double major in a content field and in secondary education. To earn the secondary education major, the candidate must complete all professional education and general education requirements previously listed as well as the appropriate content courses listed on the following pages. In addition, the candidate must earn a major in a content area. Many times the requirements for licensure in a content area and the requirements for the major in that content area are identical, but occasionally they are not. Secondary Education candidates will list their secondary content field as their first major and secondary education as their second major.

SECTION II

ENDORSEMENT AREAS (15)

Endorsement Areas Explanation

It is important to understand the differences between licensure and endorsement. The Kansas State Department of Education licenses teachers to teach at particular levels. The specific levels are elementary (K-6), middle (5-8), secondary (6-12), and elementary-secondary (PreK-12). Further, teachers are endorsed (granted permission) to teach specific subjects within respective licensure levels. In the case of elementary school licensure, teachers are endorsed to teach all the subjects normally taught in the self-contained elementary school classroom; e.g., reading, social studies, science and mathematics. Middle level and secondary licensure include endorsements in the specific subjects taught in the middle and secondary schools. Teachers licensed to teach at the PreK-12 level are endorsed in only one subject; e.g., art, health, music, or physical education. Regardless of the level(s) of licensure sought, the specific program(s) completed will determine the endorsement(s) received.

1. Art Education
2. Biology
3. Business
4. Chemistry
5. Elementary Education
6. English
7. Health
8. History and Government
9. Mathematics
10. Middle Level English
11. Middle Level Mathematics
12. Music Education: General
13. Music Education: Instrumental
14. Music Education: Vocal
15. Physical Education

Special Education-Provisional opportunities also available.

Art Education

The art education program is approved by the Kansas Department of Education for the purpose of licensing PreK-12 art teachers. The following courses are required and will satisfy the content courses needed for licensure. Please note that all teacher candidates must have an earned degree, from Baker University or elsewhere, and must satisfy Baker University's professional education and basic general education requirements.

The following courses are required of candidates seeking art licensure from Baker University.

- | | | | |
|------|---|----------|----------------------|
| I. | Seven (7) hours of Art Education courses. | | |
| A. | AE 110 Visual Language | 3 hours | F/Sp |
| B. | ED 411 Methods of Teaching PreK-12 Art | 3 hours | F |
| C. | AE 496 Portfolio and Exhibition | 1 hour | |
| II. | Twelve (12) hours of Art History courses. | | |
| A. | AH111 Survey of Art History | 3 hours | F/Sp |
| B. | AH 495 Writing About Art | 3 hours | Sp |
| C. | AH 347 Art of the 20 th Century and Beyond (1920-present) | 3 hours | Sp, odd-numbered yrs |
| D. | Three (3) hours from Art History courses numbered 300 or above | 3 hours | |
| III. | Twenty-four hours of Studio Art courses including. | | |
| | Six (6) hours of two-dimensional Studio Art courses including: | | |
| A. | AS 120 Drawing I | 3 hours | Sp |
| B. | AS 121 Painting I | 3 hours | F/Sp |
| | AND | | |
| | Three (3) additional hours of two-dimensional Studio Art: | | |
| C. | AS 170 Photography I | 3 hours | F/Sp |
| | Six (6) hours of three-dimensional Studio Art courses including: | | |
| D. | AS 132 Sculpture I | 3 hours | F |
| E. | AS 135 Ceramics I: Wheel Throwing | 3 hours | F/Sp |
| IV. | Nine (9) hours of Studio Art courses numbered 300 or above, which include all advanced and/or prerequisite courses. | 9 hours | |
| | Total hours required | 43 hours | |

Biology

The biology education program is approved by the Kansas Department of Education for the purpose of licensing 6-12 biology teachers. The following courses are required and will satisfy the content courses needed for licensure. Please note that all teacher candidates must have an earned degree, from Baker University or elsewhere, and must satisfy Baker University's professional education and basic general education requirements.

The following courses are required of candidates seeking biology licensure from Baker University.

BI 151	Molecular and Cellular Biology	3 hours	F
BI 151L	Molecular and Cellular Biology Lab	1 hour	F
BI 152	Genetics (with lab)	4 hours	Sp
BI 251	Ecology and Evolution	4 hours	F
BI 254	Organismal Diversity	4 hours	Sp
BI 298	Experimental Design workshop	1 hour	Sp
BI 342	Plant Physiology (with lab)	4 hours	
BI 375	Evolution	3 hours	Sp, odd-numbered yrs.
BI 377	Population and Community	4 hours	F
BI 380	Animal Behavior	4 hours	Sp, odd-numbered yrs
BI 382	Comparative Physiology (with lab)	4 hours	Sp
BI 410	Senior Seminar in Biology	2 hours	F
BI 498	Research in Biology	2 hours	F/Sp
ED 410	Methods for Teaching Secondary School Science	3 hours	F

Supporting Courses:

CH 137	General Chemistry I (with lab)	4 hours	F
PC 125	Introduction to Physics I (with lab)	4 hours	F
MA 221	Statistics I	3 hours	

Total hours required 54 hours

Business

The business education program is approved by the Kansas Department of Education for the purpose of licensing 6-12 business teachers. The following courses are required and will satisfy the content courses needed for licensure. Please note that all teacher candidates must have an earned degree, from Baker University or elsewhere, and must satisfy Baker University's professional education and basic general education requirements.

The following courses are required of candidates seeking licensure from Baker University.

BS 141	Introduction to Business	3 hours	F/Sp
BS 251	Business Law I	3 hours	F
BS 271	Principles of Marketing	3 hours	Sp
BS 353	Fundamentals of Management	3 hours	F
BS 381	Corporate Finance	3 hours	F
ED 417	Methods of Teaching Business	3 hours	F
BS 456	Business Policy	3 hours	F/SP
AC 141	Introduction to Financial Accounting	3 hours	F/SP
AC 142	Managerial Accounting	3 hours	F/SP
AC 351	Intermediate Accounting I	3 hours	F
AC 353	Accounting Information Systems	3 hours	F
EC 242	Principles of Economics: Micro	3 hours	F/SP
EC 243	Principles of Economics: Macro	3 hours	F/SP

Supporting courses:

BS 230	Quantitative Analysis for Business and Economics I	4 hours	F/Sp
BS 330	Quantitative Analysis for Business and Economics II	4 hours	F/Sp
BS 331	Business Information Systems	3 hours	F/Sp
BS 390	Business Internship	3 hours	F/Sp

Total hours required	53 hours
----------------------	----------

Chemistry

The chemistry education program is approved by the Kansas Department of Education for the purpose of licensing 6-12 chemistry teachers. The following courses are required and will satisfy the content courses needed for licensure. Please note that all teacher candidates must have an earned degree, from Baker University or elsewhere, and must satisfy Baker University's professional education and basic general education requirements.

The following courses are required of candidates seeking chemistry licensure from Baker University.

CH 137	General Chemistry I (with lab)	4 hours	F
CH 138	General Chemistry II	3 hours	Sp
CH 140	Quantitative Analysis (with lab)	2 hours	Sp
CH 251	Organic Chemistry I (with lab)	4 hours	F
CH 252	Organic Chemistry II (with lab)	4 hours	Sp
CH 341	Instrumental Methods (with lab)	4 hours	F alt. yr
CH 361	Physical Chemistry I	3 hours	F
CH 363	Integrated Chemistry Lab I (Spectroscopy)	1 hour	F
CH 370	Biochemistry	3 hours	Sp
CH 381 or 382	Laboratory Teaching in Chemistry (or equivalent experience)	1 hour	F/Sp
CH 491	Chemistry Seminar	2 hours	F
ED 410	Methods of Teaching Science	3 hours	F

Supporting courses:

BI 151 & BI 151L	Introduction to Molecular and Cellular Biology w/lab	4 hours	F
OR			
BI 251	Ecology and Evolution		
MA 172	Calculus & Analytic Geometry II	4 hours	
PC 140	Astronomy	3 hours	
OR			
PC 141	The Solar System		
PC 125, 126	Introductory Physics I and II,	8 hours	
OR			
PC 225, 226	General Physics I and II		
Total hours required		53 hours	

Elementary Education

Elementary education majors must complete professional and general education requirements previously listed and the required elementary education hours listed below. In order to assist with program planning, the semester in which courses are offered are indicated below.

The following courses are required of candidates seeking Elementary Education licensure.

ED 331	Methods for Teaching Elementary and Middle Level Mathematics	3 hours	S
ED 348	Methods for Teaching Elementary and Middle School Science	3 hours	F
ED 352*	Essentials of Reading and Literacy	3 hours	Sp
ED 353	Core Literacy Practicum	3 hours	Sp
ED 363**	Elementary School Social Studies	3 hours	Sp
ED 381	Integrating Music in the Elementary Classroom	1 hour	F
ED 382	Elementary and Middle-Level Art	1 hour	F
ED 383	Elementary and Middle Level Physical Education and Health	1 hour	F
ED/EN 262	Children's Literature	3 hours	F
MA 261	Mathematics for Elementary and Middle School Teachers I	3 hours	F
MA 262	Mathematics for Elementary and Middle School Teachers II	3 hours	Sp
ED 413 or 414	Special Education Requirement	3 hours	F/Sp
Total hours required		30 hours	

*Prerequisites for ED 352 Essentials of Reading and Literacy:

ED/EN 262 Children's Literature and ED 366 Teaching Elementary Language Arts in the in the Content Area

**Supporting Courses for ED 363 Elementary School Social Studies

US History course

ED 333 Teaching Economics and Geography in the Classroom

NOTE: Candidates who are considering studying abroad should plan carefully.

Please note that ED 352 Essentials of Reading and Literacy, ED 352 Core Literacy Practicum and MA 262 Math for the Elementary and Middle School Teacher II have prerequisites.

English

The English education program is approved by the Kansas Department of Education for the purpose of licensing grades 6-12 language arts teachers. The following courses are required and will satisfy the content courses needed for licensure. Please note that all teacher candidates must have an earned degree, from Baker University or elsewhere, and must satisfy Baker University's professional education and basic general education requirements.

The following courses are required of candidates seeking English licensure from Baker University.

EN 152	Introduction to Writing and Research	3 hours	S
EN 210	American Literature, Colonial Period to 1890	3 hours	
EN 212	American Literature since 1890	3 hours	

One of the following World Literature courses:

EN 223	World Literature		
EN 224	Studies in World Literature	3 hours	

Each of the following courses:

EN 226	Multi-Ethnic American Literature	3 hours	
EN 330	British Literature to 1780	3 hours	F
EN 331	British Literature since 1780	3 hours	S
ED 418	Methods of Teaching Secondary and Middle Level English	3 hours	F
ED 362	Exploring Young Adult Literature	3 hours	S
EN 363	The English Language	3 hours	F, odd-numbered yrs*
EN 365	Advanced Composition	3 hours	Sp, odd-numbered yrs
EN 460	Critical Approaches to Literature	3 hours	
EN 4XX	Two 400-level seminar courses in two different areas	6 hours	
ED 342	Language and Communication Arts in the Secondary English Classrooms	3 hours	F, even-numbered yrs.

Total hours required	45 hours
----------------------	----------

*Sometimes offered more often to accommodate candidate schedules

Health

The health education program is approved by the Kansas Department of Education for the purpose of licensing PreK-12 health teachers. The following courses are required and will satisfy the content courses needed for licensure. Please note that all teacher candidates must have an earned degree, from Baker University or elsewhere, and must satisfy Baker University's professional education and basic general education requirements.

The following courses are required of candidates seeking health education licensure from Baker University.

K-12 Physical Education and Health Licensure - Department Courses:

ED 143	Movement and Rhythm	1 hour	odd Springs
ED 180	Concepts of Health	3 hours	S
ED 240	Techniques of Teaching Team Sports	3 hours	S
ED 241	Techniques of Teaching Individual and Dual Sports	3 hours	F
ED 252	Practicum Experience in Health	1 hour	S
ED 339	Methods of Teaching Physical Education and Health	3 hours	F
EX 180	First Aid and CPR/AED for the Professional Rescuer	1 hour	S
EX 181	Introduction to Human Performance	3 hours	F & S
EX 244	Essentials in Sports Medicine	3 hours	F & S
EX 343	Physiology of Exercise	3 hours	S
PE 332	Physical Education and Health for Special Populations	3 hours	S
EX 347	Applied Kinesiology	3 hours	F
SA 388	Sports Management	3 hours	S

Activity courses:

HP 1XX	Team Sport	1 hour	
HP 167	Cross Training	1 hour	F & S

Supporting Courses:

BI 246	Human Anatomy and Physiology I	4 hours	F
EX 245	Human Nutrition	3 hours	

Total hours required	42 hours
----------------------	----------

History and Government

The history and government education program is approved by the Kansas Department of Education for the purpose of licensing 6-12 history and government teachers. The following courses are required and will satisfy the content courses needed for licensure. Please note that all teacher candidates must have an earned degree, from Baker University or elsewhere, and must satisfy Baker University's professional education and basic general education requirements.

The following courses are required of candidates seeking U.S. history, U.S. government, and world history licensure from Baker University:

HI 127	History of the United States to 1877	3 hours	F
HI 128	History of the United States since 1877	3 hours	S
HI 142	World Civilizations III	3 hours	every other fall
HI 143	World Civilizations IV	3 hours	every other spring
HI 226	Laboratory Course in Historical Methods	3 hours	F
HI 346	History of Kansas	3 hours	every other fall
HI 436	Senior Seminar in History	3 hours	F
ED 333	Teaching Econ and Geography in the Clsrm	3 hours	S
IN 101	Introduction to International Studies	3 hours	F/Sp
PS 115	Introduction to American Politics	3 hours	F
SO 115	Principles of Sociology	3 hours	F/Sp
ED 419	Teaching Social Studies in the Secondary School	3 hours	F

Total hours required 36 hours

Mathematics

The mathematics program is approved by the Kansas State Department of Education for the purpose of licensing 6-12 mathematics teachers. The following courses are required and will satisfy the content courses needed for licensure. Please note that all teachers must have an earned degree, from Baker University or elsewhere, and must satisfy Baker University's professional education and basic general education requirements.

The following courses are required of candidates seeking mathematics licensure from Baker University.

MA 171	Calculus I	4 hours	F/Sp
MA 172	Calculus II	4 hours	F/Sp
MA 271	Calculus III	4 hours	Sp
MA 281	Introduction to Linear Algebra	4 hours	F
MA 291	Introduction to Higher Mathematics	3 hours	F
MA 332	Geometry for Teachers	3 hours	Every other Sp
MA 345	Problem Seminar in Mathematics	1 hour	Sp
MA 355	Statistics and Modeling	3 hours	Every other F
MA 362	Modern Geometries	3 hours	Every other Sp
MA 383	Introduction to Modern Algebra	3 hours	Every other F
MA 445	Senior Seminar in Mathematics	3 hours	Sp
ED 412	Methods of Teaching Secondary Mathematics	3 hours	F
CS 175	Introduction to Computer Science, C++	4 hours	F
Total hours required		42 hours	

Middle Level English (Grades 5 - 8)

The middle level English education major and/or English language arts licensure program is approved by the Kansas Department of Education for the purpose of licensing grades 5-8 English language arts teachers. The following courses are required and will satisfy the content courses needed for licensure. Please note that all teacher candidates must have an earned degree, from Baker University or elsewhere, and must satisfy Baker University's professional education and basic general education requirements.

The following courses are required of candidates seeking middle level English language arts licensure from Baker University.

EN 120 Introduction to Literature	3 hours	F/Sp
EN 152 Introduction to Writing and Research	3 hours	S
EN 212 American Literature Since 1890	3 hours	
EN 226 Multi-Ethnic American Literature	3 hours	
EN 232 Poetry Writing I	3 hours	
EN 331 British Literature Since 1780	3 hours	
ED 418 Methods of Teaching Sec. and Middle Level English	3 hours	F
EN 363 The English Language	3 hours	F, odd-numbered yrs
EN 365 Advanced Composition	3 hours	Sp, odd-numbered yrs

Candidates seeking this endorsement must also take:

ED 342 Language and Communication Arts in the Secondary English Classroom	3 hours	EOF, even yrs
ED 409 Teaching Middle Level Learners	3 hours	Every other year
ED/EN 262 Children's Literature	3 hours	F
EN 362 Exploring Young Adult Literature	3 hours	S

Total Hours required	39 hours
----------------------	----------

Middle Level Mathematics (Grades 5-8)

The middle level mathematics education major and/or licensure program is approved by the Kansas State Department of Education for the purpose of licensing 5-8 mathematics teachers. The following courses are required and will satisfy the content courses needed for licensure. Please note that all teachers must have an earned degree, from Baker University or elsewhere, and must satisfy Baker University's professional education and basic general education requirements.

The following courses are required of candidates seeking middle level mathematics licensure from Baker University.

All candidates must have taken Algebra II and Geometry in high school or have completed equivalent coursework from a junior college.

MA 142	The Language of Mathematics	3 hours	Sp
MA 171	Calculus I	4 hours	F/Sp
MA 172	Calculus II	4 hours	F/Sp
MA 261	Mathematics for Elem. and Middle School Teachers I	3 hours	F
MA 262	Mathematics for Elem. and Middle School Teachers II	3 hours	Sp
MA 291	Introduction to Higher Mathematics	3 hours	F
MA 332	Geometry for Teachers	3 hours	Every other Sp
MA 345	Problem Seminar in Mathematics	1 hour	Sp
MA 355	Statistics and Modeling	3 hours	Every other F
ED 331	Methods for Teaching Elem. and Middle School Math I	3 hours	F
ED 409	Teaching Middle Level Learners	3 hours	Every other Yr
CS 151	Introduction to Computing for Non-Science Majors	3 hours	
OR			
CS 175	Introduction to Computer Science, C++	4 hours	F
Total hours required		36-37 hours	

Bachelor of Music Education for General Licensure
General - Vocal and Instrumental Music PreK-12

The Bachelor of Music Education for general licensure is approved by the Kansas State Department of Education for the purpose of licensing PK-12 vocal and instrumental music teachers. The following courses are required and will satisfy the content courses needed for licensure. Please note that all teachers must earn a degree, from Baker University or elsewhere, and must satisfy Baker University's professional education requirements. It is recommended that candidates interested in teacher licensure work closely with advisors in both the Department of Education and the Department of Music.

The following courses are required of candidates seeking PK-12 Vocal and Instrumental licensure:

Musicianship:

MU 151	Music Theory Fundamentals	2 hours	F
MU 153	Sight-singing/ Dictation/Aural Skills	1 hour	F
MU 157	Class Piano	1 hour	F
MU 164	18 th Century Harmony	3 hours	Sp
MU 158	Class Piano	1 hour	Sp
MU 263	Chromatic Harmony	3 hours	F
MU 257	Class Piano	1 hour	F
MU 264	20 th Century Compositional Techniques	3 hours	Sp
MU 258	Class Piano	1 hour	Sp
MU 320	World Music	3 hours	Sp/Su
MU 331	History of Western Music I	3 hours	F
MU 332	History of Western Music II	3 hours	Sp
MU 362	Instrumental Arranging	1 hour	Sp (Fall 15 due to sab.)
MU 249	Diction: English/Italian/Latin	1 hour	Every three semesters
MU 349	Diction: German/French	1 hour	Every three semesters
MU 354	Form and Analysis	2 hours	Sp
MU 244	Choral Conducting Techniques	1 hour	F
MU 246	Instrumental Conducting Techniques	1 hour	Sp
MU 282	Methods of Teaching Strings	1 hour	Sp, odd-numbered years
MU 283	Methods of Teaching Brass	1 hour	F, odd-numbered years
MU 284	Methods of Teaching Woodwinds	1 hour	Sp, odd-numbered years
MU 285	Methods of Teaching Percussion	1 hour	F, even-numbered years
MU 286	Methods of Teaching Voice	1 hour	Every three semesters
MU 287	Methods of Teaching Guitar	1 hour	F, even-numbered years
MU 461	Teaching Choral Music	4 hours	Varies, as enrollment dictates
MU 462	Teaching Instrumental Music	4 hours	Varies, as enrollment dictates
MU 463	Teaching Elementary General Music	4 hours	Varies, as enrollment dictates
	Recital/Concert Attendance (7 semesters minimum)	0 hours	F/Sp

Performance:

MU 21XM	Applied Lessons: Primary	7-8 hours	F/Sp
MU 41XM	Applied Lessons: Primary	6 hours	F/Sp
MU 2XX	Large Ensemble: Primary	4 hours	F/Sp
MU 4XX	Large Ensemble: Primary	3+ hours	F/Sp
MU 2XX	Large Ensemble: Secondary	4 hours	F/Sp
MU2XX	Chamber Ensemble	2 hours	F/Sp
MU 480	Partial Recital	1 hour	F/Sp

The candidate earns credit in two of the following depending on the primary performance area.

MU 207/207L AND 217	Applied Lessons: Secondary Voice (inst. or piano major)	2 hours	F/Sp
MU 21X	Applied Lessons: Secondary Inst. (inst., piano, or voice major)	2 hours	F/Sp
MU 215	Applied Lessons: Secondary Piano (voice major)	2 hours	F/Sp

Total hours required 81-82 hours

(During first semester, voice candidates enroll in MU 207, which is only 1 cr., while instrumental candidates enroll in MU 21X for 2 cr.; after the first semester, both vocalists and instrumentalists enroll in 2 cr. lessons for 3 additional semesters at the 200-level)

Bachelor of Music Education for Instrumental Licensure

Instrumental Music PreK-12

The Bachelor of Music Education for instrumental licensure is approved by the Kansas State Department of Education for the purpose of licensing PK-12 instrumental music teachers. The following courses are required and will satisfy the content courses needed for licensure. Please note that all teachers must have a degree, from Baker University or elsewhere, and must satisfy Baker University's professional education requirements. It is recommended that candidates interested in teacher licensure work closely with advisors in both the Department of Education and the Department of Music.

The following courses are required of candidates seeking PK-12 Instrumental licensure:

Musicianship:

MU 151	Music Theory Fundamentals	2 hours	F
MU 153	Sight-singing/ Dictation/Aural Skills	1 hour	F
MU 157	Class Piano	1 hour	F
MU 164	18 th Century Harmony	3 hours	Sp
MU 158	Class Piano	1 hour	Sp
MU 263	Chromatic Harmony	3 hours	F
MU 257	Class Piano	1 hour	F
MU 264	20 th Century Compositional Techniques	3 hours	Sp
MU 258	Class Piano	1 hour	Sp
MU 320	World Music	3 hours	Sp/Su
MU 331	History of Western Music I	3 hours	F
MU 332	History of Western Music II	3 hours	Sp
MU 362	Instrumental Arranging	1 hour	Sp (Fall 15 due to sab.)
MU 246	Instrumental Conducting Techniques	1 hour	Sp
MU 249	Diction: English/Italian/Latin	1 hour	Every three semesters
MU 354	Form and Analysis	2 hours	Sp
MU 282	Methods of Teaching Strings	1 hour	S, odd-numbered years
MU 283	Methods of Teaching Brass	1 hour	F, odd-numbered years
MU 284	Methods of Teaching Woodwinds	1 hour	Sp, odd-numbered years
MU 285	Methods of Teaching Percussion	1 hour	F, even-numbered years
MU 286	Methods of Teaching Voice	1 hour	Every three semesters
MU 462	Teaching Instrumental Music	4 hours	Varies, as enrollment dictates
MU 463	Teaching Elementary General Music	4 hours	Varies, as enrollment dictates p
	Recital/Concert Attendance (7 semesters minimum)	0 hours	F/Sp

Performance:

MU 21XM	Applied Lessons: Primary	8 hours	F/Sp
MU 41XM	Applied Lessons: Primary	6 hours	F/Sp
MU 2XX	Large Ensemble: Primary	4 hours	F/Sp
MU 4XX	Large Ensemble: Primary	3+ hours	F/Sp
MU 2XX	Large Ensemble: Secondary	4 hours	F/Sp
MU2XX	Chamber Ensemble	2 hours	F/Sp
MU 480	Partial Recital	1 hour	F/Sp
MU 207/MU 207L	Beginning Collegiate Voice	1 hour	F/Sp
MU 217	Applied Lessons: Voice	1 hour	F/Sp
MU 21X	Applied Lessons: Secondary Instrumental	2 hours	F/Sp

Total hours required

75 hours

Bachelor of Music Education for Vocal Licensure

Vocal Music PreK-12

The Bachelor of Music Education for vocal licensure is approved by the Kansas State Department of Education for the purpose of licensing PK-12 vocal music teachers. The following courses are required and will satisfy the content courses needed for licensure. Please note that all teachers must have a degree, from Baker University or elsewhere, and must satisfy Baker University's professional education requirements. It is recommended that candidates interested in teacher licensure work closely with advisors in both the Department of Education and the Department of Music.

The following courses are required of candidates seeking PK-12 Vocal and Instrumental licensure:

Musicianship:

MU 151	Music Theory Fundamentals	2 hours	F
MU 153	Sight-singing/ Dictation/Aural Skills	1 hour	F
MU 157	Class Piano	1 hour	F
MU 164	18 th Century Harmony	3 hours	Sp
MU 158	Class Piano	1 hour	Sp
MU 263	Chromatic Harmony	3 hours	F
MU 257	Class Piano	1 hour	F
MU 264	20 th Century Compositional Techniques	3 hours	Sp
MU 258	Class Piano	1 hour	Sp
MU 320	World Music	3 hours	Sp/Su
MU 331	History of Western Music I	3 hours	Varies, as enrollment dictates
MU 332	History of Western Music II	3 hours	Varies, as enrollment dictates
MU 249	Diction: English/Italian/Latin	1 hour	Every three semesters
MU 349	Diction: German/French	1 hour	Every three semesters
MU 354	Form and Analysis	2 hours	Sp
MU 244	Choral Conducting Techniques	1 hour	F

Two of the following five courses:

MU 282	Methods of Teaching Strings	1 hour	S, odd-numbered years
MU 283	Methods of Teaching Brass	1 hour	F, odd-numbered years
MU 284	Methods of Teaching Woodwinds	1 hour	Sp, odd-numbered years
MU 285	Methods of Teaching Percussion	1 hour	F, even-numbered years
MU 288	Methods of Teaching Piano	1 hour	F, even-numbered years

Each of the following courses:

MU 286	Methods of Teaching Voice	1 hour	Every three semesters
MU 287	Methods of Teaching Guitar	1 hour	F, even-numbered years
MU 461	Teaching Choral Music	4 hours	as enrollment dictates
MU 463	Teaching Elementary General Music	4 hours	as enrollment dictate
	Recital/Concert Attendance (7 semesters minimum)	0 hours	F/Sp

Performance:

MU 207 and MU 207L:	Beginning Collegiate Voice	1 hours	F/Sp
MU 217M	Applied Lessons: Voice	6 hours	F/SP
MU 417M	Applied Lessons: Voice	6 hours	F/Sp
MU 234 or MU 235	Large Ensemble: Choral	4 hours	F/Sp
MU 435	Large Ensemble: Choral	3+ hours	F/Sp
MU 222 and/or MU 232	Large Ensemble: Instrumental	4 hours	F/Sp
MU 236	Chamber Singers	2 hours	F/Sp
MU 480	Partial Recital	1 hour	F/Sp
MU 21X	Applied Lessons: Secondary Instrument	2 hours	F/Sp
MU 215	Applied Lessons: Secondary Piano	2 hours	F/Sp

Total hours required

73 hours

Physical Education

The physical education program is approved by the Kansas Department of Education for the purpose of licensing PK-12 physical education teachers. The following courses are required and will satisfy the content courses needed for licensure. Please note that all teacher candidates must have an earned degree, from Baker University or elsewhere, and must satisfy Baker University's professional education and basic general education requirements.

The following courses are required of candidates seeking physical education licensure from Baker University.

K-12 Physical Education and Health Licensure - Department Courses:

ED 143	Movement and Rhythm	1 hour	odd Springs
ED 240	Techniques of Teaching Team Sports	3 hours	S
ED 241	Techniques of Teaching Individual and Dual Sports	3 hours	F
ED 339	Methods of Teaching Physical Education and Health	3 hours	F
EX 181	Introduction to Human Performance	3 hours	F & S
EX 180	First Aid and CPR/AED for the Professional Rescuer	1 hour	S
EX 244	Essentials in Sports Medicine	3 hours	F & S
EX 343	Physiology of Exercise	3 hours	S
PE 332	Physical Education and Health for Special Populations	3 hours	S
EX 347	Applied Kinesiology	3 hours	F
SA 388	Sports Management	3 hours	S

Activity courses:

HP 1XX	Team Sport	1 hour	
HP 167	Cross Training	1 hour	F & S

Supporting Courses:

BI 246	Human Anatomy and Physiology I	4 hours	F
EX 245	Human Nutrition	3 hours	

Total hours required	38 hours
----------------------	----------

Physical Education/Health

A candidate wanting to earn both physical education and health licensure should include the following courses. This page is provided as a service to candidates and represents an overlap of the physical education and health programs approved by the Kansas Department of Education for the purpose of licensing PK-12 physical education/health teachers. The following courses are required and will satisfy the content courses needed for licensure. Please note that all teacher candidates must have an earned degree, from Baker University or elsewhere, and must satisfy Baker University's professional education and basic general education requirements.

The following courses are required of candidates seeking physical education/health licensure from Baker University.

K-12 Physical Education and Health Licensure - Department Courses:

ED 143	Movement and Rhythm	1 hour	odd Springs
ED 180	Concepts of Health	3 hours	S
ED 240	Techniques of Teaching Team Sports	3 hours	S
ED 241	Techniques of Teaching Individual and Dual Sports	3 hours	F
ED 252	Practicum Experience in Health	1 hour	S
ED 339	Methods of Teaching Physical Education and Health	3 hours	F
EX 181	Introduction to Human Performance	3 hours	F & S
EX 180	First Aid and CPR/AED for the Professional Rescuer	1 hour	S
EX 244	Essentials in Sports Medicine	3 hours	F & S
EX 343	Physiology of Exercise	3 hours	S
PE 332	Physical Education and Health for Special Populations	3 hours	S
EX 347	Applied Kinesiology	3 hours	F
SA 388	Sports Management	3 hours	S

Activity courses:

HP 1XX	Team Sport	1 hour	
HP 167	Cross Training	1 hour	F & S

Supporting Courses:

BI 246	Human Anatomy and Physiology I	4 hours	F
EX 245	Human Nutrition	3 hours	

Total hours required	42 hours
----------------------	----------

Special Education Provisional Endorsement

Education candidates at all levels may **add** a provisional endorsement in special education upon completion of nine credit hours.

The following courses are required of candidates seeking special education provisional endorsement:

ED 413	Methods for Teaching Adaptive Learners	3 hours	F
ED 414	Characteristics of Adaptive Learners	3 hours	SP
ED 415	Practicum for Adaptive Learners	3 hours	SP

What is a Provisional License?

The provisional license is a two year license. It may be renewed for an additional two years by making appropriate progress on the remaining coursework.

What are the requirements for a Provisional Teaching Endorsement License?

- You must already hold a valid teaching license in another subject.
- A Kansas district must verify you are assigned to teach in the provisional subject area at the appropriate level.

SECTION III ADMISSION TO THE TEACHER EDUCATION PROGRAM*

Pre-Requisites and the Five Stages of the Teacher Education Program

The Baker University School of Education is committed to learning and to developing confident and competent educational leaders.

Pre-Requisites for Admission into the USOE Teacher Education Program

A student meets the **Pre-Requisites** when they:

- ✓ successfully complete ED 100,
- ✓ successfully complete ED 243,
- ✓ receive a score of 235 or higher on at least two out of three sections of the C-BASE, or passing scores on at least two sections of the Core or PPST, or qualification for an exemption (ACT score of 26 or above or SAT score of 1170 or above), and
- ✓ have made application to the USOE

Students may not enroll in any additional professional education courses if they have not satisfied all pre-requisites.

Admittance through Licensure –

- Stage 1 - Admitted Candidate Status (Admission to the Program as a Candidate in Good Standing, Conditional, or Probationary status)
- Stage 2 - Entry to Student Teaching
- Stage 3 - Exit from Student Teaching
- Stage 4 - Program Completion
- Stage 5 - After Program Completion (Initial Licensure)

Admission through Licensure

Descriptions of Stages

Stage 1 – Admitted Candidate Status Categories

Once all pre-requisites have been satisfied, the student is admitted as a candidate in Good Standing, Conditional, or Probationary status.

Good Standing

An ***admitted*** candidate is considered to be in Good Standing if ALL of the following criteria have been met.

**See Appendix S for new Gateways, soon to be adopted*

- ✓ Earned scores of 235 on all required sections of the C-BASE or passing scores on all sections of the Core or PPST or qualified for an exemption (ACT score of 26 or above or SAT score of 1170 or above)
- ✓ Earned a grade of "C" or above in ED 243 and all licensure content area and professional courses taken as well as CO 115
- ✓ Attained an overall cumulative GPA of 2.5 or above
- ✓ Attained a content area and professional GPA of 2.8 or above
- ✓ Attained a composite average of 3.5 or above on the Personal and Professional Skills Survey
- ✓ Attained a composite average of 3.5 or above on Professional Development School practica evaluations

Candidates must be in Good Standing in order to be approved for student teaching.

Conditional

An ***admitted*** candidate is considered to be Conditional if ONE or more of the criteria for Good Standing is not met and ALL of the following have been met.

- ✓ Earned scores of 235 on two of the three sections of the C-BASE or passing scores on two of the three sections of the Core or PPST or qualified for an exemption
- ✓ Completed ED 243 with a grade of "C" or above.
- ✓ Attained an overall cumulative GPA of 2.4 or above
- ✓ Attained a content area and professional GPA of 2.5 or above
- ✓ Attained a composite average of 3.0 or above on the Personal and Professional Skills Surveys
- ✓ Attained a composite average of 3.0 or above on Professional Development School practica evaluations

U-SOE faculty members will meet with all Conditional candidates in order to complete a *Plan for Addressing Concerns Regarding Candidate Status* form, which will be provided to advisors.

Probationary

An ***admitted*** candidate who has completed ED 243 is considered to be Probationary if ONE or more of the criteria for Conditional status is not met.

Probationary Candidates may not enroll in any 300- or 400-level professional education course unless they are retaking such a course. In rare instances, a Probationary Candidate may apply for and be granted a one-time waiver by the Department Chair in order to enroll in 300- or 400-level professional education courses. This would only be considered if there were no other courses in which the candidate might enroll in order to complete a full schedule of 12 hours. A second waiver would require approval by the full USOE and the Dean and is highly unlikely to be granted.

U-SOE faculty members will meet with all Probationary candidates in order to complete a *Plan for Addressing Concerns Regarding Candidate Status* form, which will be provided to advisors.

Stage 2 - Entry to Student Teaching

The Council for Undergraduate Teacher Education grants candidates permission to enter the student teaching semester. In order to be admitted into the student teaching semester, a candidate must be in Good Standing and have met the following criteria:

- ✓ Completion of all Good Standing requirements
- ✓ Approval from the Council for Undergraduate Teacher Education
- ✓ Completion of 15 hours of community service
- ✓ Completion of at least 15 hours of credit from Baker University
- ✓ Completion of an application to student teach
- ✓ Completion of CO 115, PY 111, and PY 243
- ✓ Completion of all professional and content coursework except the student teaching semester*

*NOTE: This indicates that no candidate may student teach with a grade of "Incomplete" from the semester prior to the student teaching semester.

Further information on Stage 2 and the student teaching semester is included in Section VI The Student Teaching Semester of the TEPPH.

Stage 3—Exit from Student Teaching

Candidates must complete clinical practice (student teaching) with a grade of "C" or above. They will also complete the Kansas Performance Teaching Portfolio (KPTP) during student teaching. A listing of these requirements includes:

- ✓ Earn a grade of "C" or above in student teaching
- ✓ Attain a composite average of 3.0 on the cooperating and supervising teacher final summative evaluations with no more than two criteria scores below a 3.0 on any one of the final evaluation forms (department discussion and needs to be in the student teaching handbook with a note referring to this page in the TEPPH)

Further information on Stage 3 and the student teaching semester is included in Section VI The Student Teaching Semester of the TEPPH.

Stage 4 - Program Completion

Candidates who have graduated and met all program requirements are deemed program completers. In addition, successful program completion requires:

- ✓ Maintaining a cumulative GPA ≥ 2.5 (on a 4.0 scale)
- ✓ Maintaining a GPA ≥ 2.8 on professional and content coursework
- ✓ Successful completion of all content and professional courses with a grade of "C" or above including student teaching
- ✓ Successfully complete the KPTP

Stage 5 - After Program Completion (Initial Licensure)

Candidates who have graduated, completed the program, and earned passing scores on the Praxis II Principles of Learning and Teaching (PLT) and the appropriate content area test(s), may apply for a teaching license from the Kansas State Department of Education. Further information on Stage 5 and procedures for obtaining a teaching license are included in Section VII Procedures for Obtaining Teacher Licensure of the TEPPH. You can also find further information on the required Praxis test in Section IV Pre-Licensure Testing of the TEPPH. The Licensure Officer will provide assistance with this process.

Retention in the Program

Automatic Drop

If a student has not taken ED 243 within three semesters after taking ED 100, he/she will be removed from the department database unless the student has contacted the Licensure Officer with notification of plans to continue in the program. These students will be emailed of the plans to drop them from the program unless the department is notified. If and when the dropped student decides to take ED 243, he/she will be required to make application again at that time and will then be governed under the requirements of the handbook in use at that time.

Candidate Dismissal

Candidates will not be allowed to enroll in education courses if ANY of the following situations occur: and are subject to dismissal from the teacher education program.

- ✓ Personal and/or professional misconduct
- ✓ Academic misconduct
- ✓ Failed the same professional education course twice
- ✓ Failed three or more professional education courses

See the list below of Professional Education courses.

Professional Education courses:

- ED 100 Teaching as a Career
- ED 243 Introduction to Education
- ED 244 Education Practicum I
- ED 264 Foundations of Classroom Management
- ED 265 Technology for Teachers
- ED 309 Evaluation Techniques for the Classroom
- ED 313 Bilingual Education
- ED 320 Education Field Service Practicum I
- ED 322 Education Field Service Practicum III
- ED 343 Educational Psychology
- ED 345 Psychology of the Exceptional Learner
- ED 366 Teaching Elementary Language Arts in the Content Areas

OR

- ED 368 Teaching Reading in the Secondary Content Areas
- IS 199 Diversity in Education Interterm (open to juniors and seniors)
- ED 462 Education Orientation Internship

ED 440 Pre-Student Teaching Seminar for Elementary Majors
ED 450 Student Teaching in the Elementary or Middle School
ED 460 Pre-Student Teaching Seminar for Secondary and/or Middle Level Majors
ED 470 Student Teaching at the Secondary and/or Middle Level
ED 480 Middle Level Student Teaching

Readmission

If five or more years have elapsed since a student was deleted from the Undergraduate SOE database, the candidate will be required to meet teacher licensure requirements of the handbook in effect at the time of readmission.

Academic and Professional Misconduct

As students at Baker University and as aspiring professionals in the USOE, integrity is highly valued. Academic and professional conduct above reproach is essential in the development of confident, competent and responsible citizens. To facilitate the attainment of these goals the USOE adheres to the policies in the Baker University Student Handbook. Additional policy insight, specific to candidates in the School of Education, can be found in Appendix J.

Due Process Procedure

Candidates have the right to petition decisions and policies made by the Undergraduate Department of the School of Education. Petitions may be submitted in letter format to the department chair.

In addition, candidates who have complaints should submit them in writing in a formal format addressed to the Department Chair. If not resolved at that level, complaints will be brought to the Dean for resolution. Documentation of all complaints will be housed in the Dean's office with a copy filed in the licensure officer's office.

Explanations of Further Requirements

Communication

The official means of communication between the U-SOE and candidates will be Baker University email. Candidates are responsible for checking their Baker and maintaining their mailboxes so that messages can be received and sent; ignored mailboxes may become too full and reject messages.

TaskStream

Candidates will be required to keep their TaskStream updated. Each year there will be a new code that will need to be entered for current submissions. Candidates may create rubrics, access state standards for lesson plan writing, and create a Professional Portfolio that will be used for a capstone project in the Pre Student Teaching Seminar class. TaskStream is the primary data collection vehicle for the USOE. Candidates benefit from this data collection since it provides valuable feedback to USOE faculty and supports the accreditation process.

Conviction of a Crime Punishable as a Felony

Candidates who have been convicted of, or who pleaded guilty to a felony or crime involving theft, drugs, or a child are required to submit a certified copy of the court order or diversion agreement to the Kansas State Department of Education (KSDE) at the time of making application for teacher licensure. Persons with felony or criminal convictions will be reviewed by the Kansas Professional Practices Commission prior to issuance of a teaching license. The teacher candidate may not receive licensure to teach in Kansas. KSDE recommends that teacher education institutions inform all teacher education candidates of this practice as they enter and progress through the teacher education program, and certainly inform candidates prior to application for licensure.

All Baker University education candidates will be required to sign a copy of the “Felony Disclosure” form during ED 100 and in each subsequent course that involves an unsupervised field experience, practicum, or other activity involving school-aged students. Counseling sessions may be required depending on the information collected on this form.

Involvement in and Service to the Larger Community

Candidates are expected to demonstrate involvement in and service to the larger community. The department expects candidates to provide a minimum of 15 hours of approved community service to the larger community, assisting individuals or groups without pay or course credit. Candidates must keep a listing of hours served on the "Community Service Documentation Form," and write a summary of the learning experiences derived from these experiences. Both documents will be evaluated in ED 462 Education Orientation Internship. (See Appendix L.)

Candidate Portfolios

In the Beginning:

All teacher education candidates are required to begin the process of collecting educational artifacts. These artifacts will provide evidence of the candidate’s performance on the program objectives. Throughout the course of the program, candidates will be encouraged to organize a variety of artifacts that will accentuate insight and growth.

Middle:

During the sophomore/junior year candidates are highly encouraged to reflect on their growth throughout the professional education and content courses. The collection of artifacts, experiences and insights will all facilitate the ease of creating the final portfolio presentation in the Pre Student Teaching Seminar course taken the semester before student teaching.

Toward the End:

During the Pre Student Teaching Seminar teacher candidates will transform this collection of materials into a true developmental portfolio by reexamining all entries, organizing contents, and writing reflective analyses over their development, and making an oral presentation of this material to their peers and faculty. Portfolio entries are organized within five themes: 1) reflective practitioner, 2) planner of instruction, 3) facilitator of learning, 4) assessor of learning, and 5) technologically skilled practitioner.

A Guide for Computing the Cumulative GPA for Candidates

Candidates must possess a cumulative GPA ≥ 2.8 for all professional and required content area courses, and a cumulative GPA ≥ 2.5 for all college credit taken from any campus to be declared a Candidate in Good Standing and before recommendation for the student teaching semester. The cumulative GPA must be computed from all college work taken, both at Baker University and other colleges. Pass/No Credit hours are not computed in the GPA.

MyBaker offers an electronic way to compute the GPA. This tool is available on the Records and Registration section of the website.

Academic Forgiveness Policy

October 28, 2014

Baker University's School of Education will forgive up to **6 hours** of college credit coursework for a teacher education candidate when computing the cumulative GPA if the following conditions are met:

1. The deleted coursework must have been taken **a minimum of four years** prior to program acceptance; and
2. The deleted coursework **will not be used** to fulfill degree or program requirements.
3. For admission requirements please refer to the beginning of this section.

SECTION IV PRE-LICENSURE TESTING

Basic Skills Tests

Accrediting agencies require teacher education programs to use a basic skills test for admission to teacher education. Baker University requires the College Basic Academic Subject Examination (C-BASE), the Pre-Professional Skills Tests (PPST), or the Core Academic Skills for Educators (Core) for admission to the undergraduate program. The department requires candidates to take the C-BASE, PPST, or Core during the first education course, ED 100. In order to pass ED 100 the test must be taken. All three tests include three sections: Reading/English, Writing, and Mathematics.

The College Basic Academic Subject Examination (C-BASE) will usually be offered twice each semester. If a candidate fails any section, they **MUST** retake the needed sections at the next test offering. If candidates **fail to sign up for the next offering, or if a candidate fails any section on the second attempt, they are restricted from taking any 300 or 400 level Professional Education courses until all three sections are passed.**

Candidates are required to pass at least two of the three parts of the C-BASE, Core, or PPST before enrolling in upper level education courses unless the department has granted an exception. All three sections of the C-BASE, Core, or PPST must be passed before the candidate is declared a Candidate in Good Standing and before admission to the student teaching semester. The C-BASE will be administered on campus and the Core or PPST can be taken at established testing sites or on-line. Individual tutoring sessions may be scheduled at the Student Academic Success (SAS) center prior to C-BASE testing dates. College graduates with a cumulative grade point average of 3.0 or greater and all persons with either an ACT composite score of 26 or higher, or an SAT composite score of 1170 or higher, are exempt from taking the C-BASE, Core, or PPST.

NOTE: As a convenience to candidates, the testing fee for the first administration of the C-BASE will be included in tuition/course fees for all candidates enrolled in ED 100. Those who are exempt from taking the C-BASE will be reimbursed. Any fees for retaking the C-BASE will be the responsibility of the candidate.

Passing scores for the admissions tests are listed below:

C-BASE:	English - 235	Writing - 235	Mathematics - 235
PPST:	Reading - 173	Writing - 172	Mathematics - 172
Core:	Reading - TBD	Writing - TBD	Mathematics - TBD

Principles of Learning and Teaching (PLT) and Content Area Tests

The Kansas State Department of Education requires each person who is seeking a Kansas teaching license to pass both the Principles of Learning and Teaching Test (PLT) and a content test in each endorsement area. Each of these tests is administered by Educational Testing Service (ETS), a company that specializes in developing tests. Kansas testing locations and testing centers in other states are listed in *The Praxis Series Registration Bulletin* or on-line at www.ets.org. This bulletin is available in the department's teacher education office. Candidates must verify a passing score for the appropriate content assessments as well as the PLT to qualify for an initial license.

PLT

The PLT should be taken the semester before or during student teaching. To do well on the PLT, it is important that candidates complete most of their professional coursework, particularly ED 343 Educational Psychology, ED 345 Psychology of the Exceptional Learner, and ED 309 Evaluation Techniques for the Classroom prior to taking the test. The department will assist candidates as they prepare for the PLT; however, the majority of the responsibility to prepare for this test rests with the candidate. The PLT test is offered several times a year at a number of testing sites. The passing score set by the Kansas State Department of Education for the PLT test is 160.

Content Area Tests

KSDE requires most teaching candidates to pass a content test over endorsement areas for teacher licensure. For example, those pursuing an endorsement in biology must take a test over biology content. Elementary education majors will take a test over elementary education curriculum, instruction, and assessment. Content tests should be taken as soon as all content courses are completed. See the content test material posted in the Education Station for registration information and a listing of all cut scores. The process for signing up and taking this test will be the same as that for the PLT. All required content tests are listed on the KSDE.org website.

Test Procedures and Policies

When completing the applications to take these tests, candidates will be asked where they attended college. This is a very important step in completing the Baker University program and teacher licensure requirements and care should be taken to enter the correct code, 6031. **Note**, ETS does not send the scores to the Baker USOE. Candidates are responsible for getting their scores to the licensure officer in order to submit all data required for licensure. Candidates should not send scores for their Initial license to the State of Kansas. Care should also be taken when entering the social security number on the application form.

Candidates concerned about their performance on the C-BASE or PPST or PLT tests are encouraged to consult with department staff or the Student Academic Success (SAS) center for help with test preparation. SAS is located on the ground floor of the Collins Library.

SECTION V PROFESSIONAL FIELD EXPERIENCES

Teacher education candidates will complete a minimum of 200 clock hours in classrooms before student teaching. Baker University's Professional Development School (PDS) relationships have expanded to include two distinct consortiums: the Area Professional Development School Partnership and the Urban Professional Development School Partnership. The Area PDS Partnership includes all schools in the USD 348 (Baldwin City) and USD 289 (Wellsville) districts. The Urban PDS Partnership is with USD 500 (Kansas City) district. These partnerships strengthen the field experiences provided to education majors.

Field Experiences Required of All Candidates

ED 244 Education Field Practicum I

Candidates will be assigned to a public school teacher mentor during ED 244 and will spend 20 hours serving as a classroom aide to an assigned mentor teacher. The Baker University candidate will assist in many student learning activities. The prerequisite for ED 244 is ED 243 Introduction to Education.

ED 320 Education Field Service Practicum I

Candidates desiring teacher licensure must enroll in ED 320 after taking ED 243 and ED 244 and before the student teaching semester. Candidates will take an increasingly sophisticated level of field service responsibilities with an assigned mentor teacher. Music education candidates will satisfy the ED 320 requirement through practicum experiences in music coursework.

IS 199 Diversity in Education – Interterm Only Course

Diversity in Education, a field experience in an urban school, gives prospective teachers the opportunity to gain valuable experience working in a diverse school setting. IS 199 has ED 243 and ED 244 as prerequisites and should be taken during the junior or senior year.

ED 462 Education Orientation Internship – Fall Only Course

ED 462 requires a candidates to spend 30 hours assigned to a mentor teacher at the beginning of the contract year. These hours include participating in before-school planning, preparation, curriculum meetings, school improvement activities, and attending faculty meetings. Candidates take this course in the fall of the student teaching year.

Optional Field Experiences Available to All Candidates

ED 322 Education Field Service Practicum III

ED 322 is designed to provide candidates with a specialized classroom experience tailored to meet their individualized needs. Candidates will meet with the PDS Coordinator to devise a course of study that best addresses the candidates's needs and the relevant course objectives.

ED 322 will be required of all candidates who average a score of 3.0 or below on the PDS Evaluation form. The PDS Coordinator will oversee this requirement and work with candidates to ensure their enrollment and monitor their progress. The intent of this requirement is attempted remediation of those pre-service candidates whose scores are at or below the Basic level on the PDS Evaluation form. ED 322 offers the candidate one more opportunity to raise the PDS score to the necessary 3.5 which is a factor in approving a candidate for the student teaching semester.

ED 322 is also offered to any candidate who may desire an additional practicum experience. The prerequisites are ED 243, ED 244, and ED 320.

Other Practicums

IE 160 Education in Action – Interterm Only Course

All candidates may choose to gain additional experience by enrolling in the interterm course IE 160 Education in Action. Candidates spend interterm in a classroom of their choice, and will be expected to progress from a classroom observer to a functioning teacher's aide.

Methods Courses

Several courses have required practicum experiences built into the requirements of the courses. For example, elementary education majors are required to complete ED 353 Core Literacy Practicum. This is a three-hour course devoted to reading activities in the school. Candidates enrolled in this course spend numerous class periods doing small-group teaching of reading. Separate sessions allow a candidate to work at different age levels. Under direct supervision, Baker University candidates both plan and actually teach reading lessons covering material that has been taught in ED 352 Essentials of Reading. Secondary candidates have practica included in their respective methods courses.

Felony Disclosure Forms

All Baker University education candidates will be required to sign a copy of the "Felony Disclosure" form during ED 100 and in each subsequent course that involves an unsupervised field experience, practicum, or other activity involving school-aged students. Counseling sessions may be required depending on the information collected on this form. Contingent upon the candidate's response, recommendation for continuing in the program and/or licensure may be delayed or denied. (Appendix R)

Interterm Enrollment Timeline

Policy

Candidates taking interterm courses that are education field experiences are required to enroll during the regular enrollment period. Those who enroll after the official enrollment date may be denied a placement. Education field experiences involve placing Baker University candidates within schools that must be arranged prior to leaving for winter break. Placement information and course requirements are distributed to candidates in a mandatory meeting that will take place soon after the regular enrollment period ends. Enrolled candidates will be sent an e-mail indicating the time and place of the mandatory meeting. Only candidates attending the placement meeting will remain in the course, all others will be administratively dropped.

This policy pertains to the following education field experience interterm courses:

IS 199 Diversity in Education

IE 160 Education in Action

Rationale

The purpose of this policy is to foster and maintain good relations with the public schools. These courses require advanced planning and arrangements that are done in December before winter break. Also, candidates who do not attend one of the mandatory meetings scheduled in December will not understand the scope or expectations of the courses. This policy will avoid last minute pleas for candidate placements in the schools.

SECTION VI THE STUDENT TEACHING SEMESTER: STAGES 2, 3, AND 4

Permission to Enter the Student Teaching Semester

The Council for Undergraduate Teacher Education grants candidates permission to enter the student teaching semester. Although most candidates enroll in the student teaching semester during their final semester, a candidate may enroll in student teaching during the first semester of his or her senior year if all content and professional education courses are satisfactorily completed. Still other candidates take the student teaching semester immediately after they graduate.

Prior to the semester in which a candidate wishes to do his/her student teaching, the candidate must submit an application to enroll in the student teaching semester. In earlier orientation sessions, candidates are informed that they must submit this request. In addition, potential candidates are reminded by email and letter to enroll in the student teaching semester.

In order to be admitted into the student teaching semester, a candidate must be in Good Standing and have met the following criteria:

- ✓ Completion of all requirements
- ✓ Approval from the Council for Undergraduate Teacher Education
- ✓ Completion of 15 hours of community service
- ✓ Completion of at least 15 hours of credit from Baker University
- ✓ Completion of an application to student teach
- ✓ Completion of PY 111, PY 243, and CO 115
- ✓ Completion of all professional and content coursework except the student teaching semester

All candidates who apply for entry into the student teaching semester are notified by letter of the CUTE's decision. Letters to candidates who are approved include a stipulation that the approval is contingent on remaining in good standing. If a candidate falls below the specified standards during the semester in which approval is granted, permission to student teach could be rescinded. Candidates are also informed of any requirements for licensure that have not been met.

Candidates who are denied may appeal the decision of the CUTE. Please refer to the Due Process Procedure found in this TEPPH.

Student Teaching Placement

Candidates who are approved by the Council for Undergraduate Teacher Education for student teaching will be assigned to their student teaching site and cooperating teacher by the Licensure Officer. Baker University has student teaching contracts with most school districts within a 50-mile radius. For a listing of approved sites, please check the list posted in the Education Station. Candidates will be provided a listing of these school districts and will be given the opportunity to request their top three choices; however **candidates are not to make their own arrangements** for student teaching sites. Candidates will not be reimbursed for travel expenses incurred while student teaching (or for attending practicum sites before student teaching). Background checks are now required by many school districts before student teaching. The fee for this service is payable by the student and will be added to your tuition the semester you are enrolled in ED 440/460.

Beginning in the 2013-2014 academic year, the Kansas State Department of Education (KSDE) will assess each student teacher a \$60 fee for administration costs associated with completing and evaluating the Kansas Performance Teaching Portfolio (KPTP). In order to cover this cost, candidates enrolled in ED 440/460 will be assessed a \$60 educational instructional fee that will be used by Baker University to pay KSDE in the student teaching semester for KPTP fees.

Student Teaching Policies

Assignment Policies

Candidates are not to make their own arrangements for student teaching sites.

District Assignment Preferences

The Undergraduate School of Education (USOE) will request placements from districts within a 50 mile radius, with which we have contracts. If the USOE does not have a contract with a district within the 50 mile radius and that specific district is of interest to a candidate, a request for a contract will be considered. Candidates requests will be taken into consideration, with districts making the final placements. A list of available districts is posted in Case 205.

Student Teaching in Schools a Candidate Has Attended

To create rich experiences and to increase networking, candidates are highly encouraged to student teach in a new setting. Ideally this would not be where they attended high school, with a previous teacher, or where a parent is employed.

Commitment of Energy and Time

Student teaching is highly demanding. As a result, candidates are strongly discouraged from: enrolling in any additional courses; having outside employment; and/or participating in intercollegiate athletics and/or co-curricular activities.

Candidates must sign a form stating that they recognize that outside demands on their time may jeopardize the successful outcome of student teaching. Candidates participating in athletics will not be allowed to miss student teaching time to attend athletic competitions beyond their available discretionary days.

More information regarding student teaching policies can be found in the Student Teacher Handbook that is made available to cooperating teachers and student teachers during the student teaching semester.

SECTION VII

PROCEDURES FOR OBTAINING TEACHER LICENSURE: STAGES 5

Accrediting Agency Requirements

The minimum requirements specified by accrediting agencies for licensure are:

- 1) successfully complete a content test and the PLT test.
- 2) complete an approved teacher education program and be recommended by that institution,
- 3) possess a bachelor's degree, and
- 4) complete a license application and submit the licensing fee as set by KSDE.

School of Education's GPA Requirements

In addition, the School of Education has GPA requirements. The GPA requirements for teacher licensure include:

- ✓ A cumulative GPA requirement of 2.5 for all college work; and
- ✓ A 2.8 cumulative GPA for professional and content area courses.

Adding Endorsements

Adding Endorsements to a Current Kansas Teaching License

Additional endorsements can be obtained by:

- 1) passing the appropriate content tests (as of July 2008)
- 2) completing additional subject matter components appropriate for the level of licensure and passing the appropriate content tests. The Kansas State Department of Education (KSDE) provided these methods for adding endorsements to a teaching license.

(Elementary, early childhood and all special education endorsements are not available by testing only. Secondary, middle level, and all-level endorsements for art, physical education, music, or world language can be added through testing.)

License Application

During the student teaching semester candidates should complete the on-line application form found on the Kansas State Department of Education website. The application is submitted to Baker and stored electronically until student teaching and all other requirements have been completed. The fee for a Kansas teaching license is set by and payable to KSDE.

Successful applicants submitted for processing will be issued an initial teaching license valid for two years from KSDE. Guidelines for renewal can be obtained from the Kansas State Department of Education.

Additional Licensure Opportunities for Graduates

Special Education Provisional License (for those who have successfully completed the SPED requirements and have accepted a SPED teaching position)

One Year Non-Renewable License (for those candidates who have not taken or passed the content area and/or PLT)

Added Endorsement areas by Test Only option (see above)

Fingerprinting and Background Checks (for licensure)

In compliance with state statute, candidates must be fingerprinted in order to have a background check done by a licensed agency prior to their Kansas licensure application. This background check will require candidates to complete a fingerprinting process conducted by a licensed law agency. The department will assist in making arrangements for fingerprinting during student teaching. The fee for this background check is set by KSDE and will be added to the student teaching semester billing by the business office.

Teaching in Other States

Candidates need to apply for a Kansas license even if they do not intend to teach in Kansas. Holding a certificate from the state where the teacher training is received makes it easier to obtain a teaching license from another state.

The Kansas State Department of Education website has a list of all state department websites and contact information. It is wise to contact the individual states for official information.

The Kansas State Department of Education currently has a licensure exchange agreement with Iowa, Minnesota, Missouri, Nebraska, North Dakota, Ohio, Oklahoma, South Dakota, and Wisconsin, which means that any person holding a valid license in Kansas is guaranteed a two-year provisional license in any of these states. The two-year provisional license provides time to meet any additional requirements necessary for full licensure.

Teaching Credentials

Information regarding teaching credentials can be obtained by visiting the Career Development Center in Harter Union. A representative of the Career Development Center will work with candidates during ED 440 or ED 460 to inform candidates of the services available. Spring graduates must complete credential files before March 1 of the year of graduation in order to participate in the Teacher Fair. Fall graduates should complete their credential file by November 1.

SECTION VIII NON-TRADITIONAL PATHWAYS TO TEACHER EDUCATION

Transfer or Late-Deciding Students

Transfer students are welcome in Baker University's teacher education program. The Licensure Officer and faculty members will work closely with you to individually analyze your past coursework and plan your future classes to help you meet your goal of becoming a teacher.

Transfer students or candidates who enroll in the program during their junior year or later may be permitted, with Department Chair approval, to enroll concurrently in ED 100 Teaching as a Career, ED 243 Introduction to Education, and other Professional Education courses, deemed appropriate. Transfer students must complete a minimum of 15 credit hours at Baker University prior to the student teaching semester. Of these 15 hours, 3 hours must be an upper level Professional Education course.

College Graduates

A person who holds a degree from an accredited institution and seeks teacher licensure through Baker University may meet some of the general education, professional education, and/or content area requirements through equivalent course work if approved by the Undergraduate Department.

Admission Policy of SOE Undergraduate Candidates to SOE Graduate-Level Courses

Juniors and seniors who meet the requirements below and who have received the necessary approvals and permission from the Dean of the School of Education may enroll in ED 515 Practicum for Adaptive Learners and either ED 513 Methods for Teaching Adaptive Learners or ED 514 Characteristics of Adaptive Learners. These courses will be taught on the Baldwin City campus and Baldwin City campus tuition and fees will be assessed.

Minimum Requirements:

1. Completion of at least 80 credit hours prior to the beginning of the graduate level course(s).
2. Completion of either ED 413 Methods for Teaching Adaptive Learners or ED 414 Characteristics of Adaptive Learners with a grade of "C" or above.
3. Earned at least a 3.0 cumulative GPA in all college work.

To request permission to take a graduate-level course, the senior must:

1. Obtain an application to take a graduate level course from the instructor (Dr. Wintermantel) and an unofficial transcript.
2. Complete the form, attach the transcript to the form, and seek approval signatures on the form from the course instructor, candidate's undergraduate advisor, and the chair of the undergraduate department of education.
3. Submit the completed form to the Dean of the School of Education. This last step should occur no later than one month before the beginning of the course.

This policy is intended to allow undergraduate candidates to earn six (6) hours of graduate credit and the possibility for a provisional license in special education. Undergraduate candidates cannot enroll in more than six (6) credits of graduate-level credit. Graduate-level credit cannot be applied to bachelor degree requirements and cannot be computed in the undergraduate GPA.

In order to meet financial aid eligibility requirements, candidates should enroll in at least 12 undergraduate hours *in addition* to any graduate-level credit. Undergraduate tuition and fees will apply to these graduate-level enrollments.

Requests by candidates who meet all the requirements stated above will be approved by the Dean of the School of Education or the Dean's designated representative . In exceptional cases, candidates who do not meet the requirements stated above or who miss the deadline may present a petition to the Dean of the School of Education.

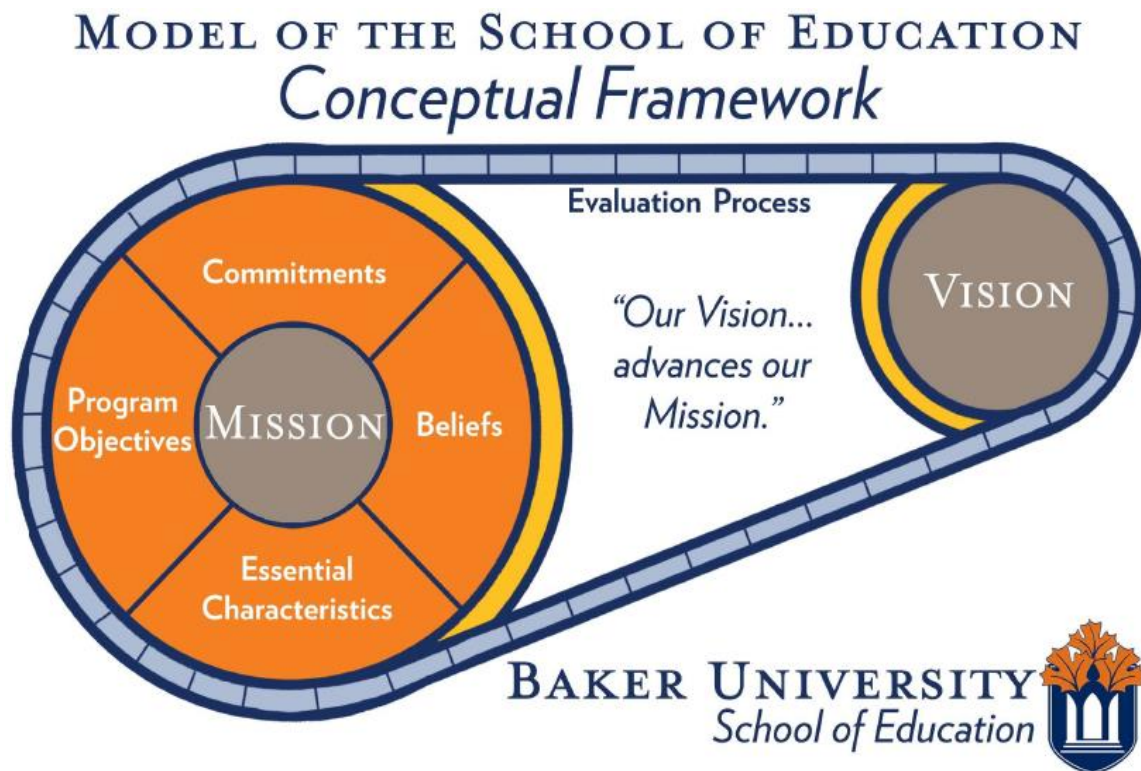
SECTION IX CONCEPTUAL FRAMEWORK

Conceptual Framework Components

The conceptual framework for the Baker University School of Education (SOE) has seven components including the: 1) Mission, 2) Vision, 3) Beliefs, 4) Commitments, 5) Program Objectives, 6) Essential Characteristics, and 7) Evaluation Process. This conceptual framework drives all programs. The Mission, Vision, Beliefs, and Commitments are the same for both the undergraduate and graduate levels of the SOE. The Program Objectives, Essential Characteristics, and Evaluation Process components vary depending on the program. The various components reflect the Baker University Vision and Purpose, Mission, and Values.

Model of the Conceptual Framework

The model of the School of Education (SOE) Conceptual Framework (CF) illustrates the dynamic and systematic process used to develop and sustain educational programs committed to learning and to the development of confident and competent educational leaders. The seven components of the model are encapsulated within two wheels. The larger first wheel contains the 1) Beliefs, 2) Program Objectives, 3) Essential Characteristics, and 4) Commitments. These components surround the 5) Mission, which is the hub of the wheel. The second wheel contains the 6) Vision. The two wheels are linked together by 7) the Evaluation Process. The larger wheel represents the basis on which SOE programs are built and the second wheel provides the basis for future growth. The evaluation process provides the evidence for determining how closely the vision supports and advances our mission.



SOE Mission, Vision, and Beliefs

SOE Mission

The Baker University School of Education is committed to learning and to developing confident and competent educational leaders.

SOE Vision

The Baker University School of Education provides quality programs grounded in a tradition of academic excellence and responds to the educational needs of the future.

SOE Beliefs

The School of Education believes a confident and competent educational leader

- Advocates for all students and their learning successes;
- Has a strong knowledge base and sense of beliefs and values supported by educational research and best practices;
- Has the commitment and skills to transfer knowledge, beliefs and values into policy and practice;
- Demonstrates interpersonal practices that advance the welfare and dignity of all persons; and
- Maintains an unremitting drive for improvement.

SOE Commitments

A listing of sixteen SOE commitments has been developed to increase the probability that all SOE faculty and staff members are “committed to learning and to developing confident and competent educational leaders.” The SOE commitments are listed below.

The unit is committed to ensuring

1. Candidates understand the conceptual framework.
2. Candidates are committed to student learning and the belief that all students can learn.
3. Candidates know their licensure area content and can make meaningful applications of the content during field experiences.
4. Candidates know how to engage students and organize instruction that enhances learning.
5. Candidates think systematically about their practice and use problem solving, critical thinking and reflection in their daily practice.
6. Candidates become members of professional communities, collaborate with professional educators, and demonstrate the value of life-long learning.
7. Candidates develop a respect for diversity and become inclusive educators who enhance learning opportunities for all students.
8. Candidates demonstrate communications skills appropriate to their field of endorsement.
9. Faculty and candidates model ethical practices, values, and dispositions.

10. Faculty model a variety of instructional strategies supported by wisdom of practice and educational research.
11. The integration of content within and across the disciplines and the application of knowledge to life situations.
12. Professional growth for all faculty and staff members.
13. Regular and systematic program evaluations, through the analysis of program data, and making program modifications when appropriate.
14. The development of collaborative/cooperative agreements with school districts, higher education faculty and other members of the professional community.
15. The implementation of a technology plan for each program that enables candidates to enhance learning for all students.
16. Involvement in service to the wider community.

U-SOE Program Objectives

Using the Mission Statement, Essential Characteristics (personal and professional skills and dispositions), and knowledge bases supported by research and best practices, department members identified fifteen Program Objectives that undergraduate candidates are expected to be able to demonstrate in the process of becoming confident and competent educational leaders. The first 10 program objectives mirror the INTASC standards. The first 13 are closely related to the Kansas Professional Education Standards adopted by the Kansas State Board of Education September 2001, with revisions aligned with the writings of Charlotte Danielson. Program Objectives 14 and 15 are unique to Baker University's undergraduate teacher education program.

1. Making Content Meaningful

Our graduates will demonstrate the ability to use the central concepts, tools of inquiry, and structures of the discipline as s/he teaches, creating learning opportunities, including integrated learning experiences that make these aspects of subject matter meaningful for all students.

2. Human Development and Learning

Our graduates will demonstrate the ability to engage students in learning through the use of multiple and effective instructional strategies appropriate to students' developmental levels and knowledge of content.

3. Diverse Learners

Our graduates will demonstrate the ability to use information about students' interests, abilities, skills, backgrounds, and peer relationships to make knowledge accessible to all students, including students with exceptionalities and diverse learners.

4. Instructional Strategies

Our graduates will demonstrate the ability to use a variety of appropriate instructional strategies to encourage the students' development of critical thinking, problem solving, and reading.

5. Motivation and Classroom Management

Our graduates will demonstrate an understanding of individual and group motivation and student behavior that fosters positive and safe learning environments and encourages positive social interaction, active engagement in learning, and self motivation.

6. Communication

Our graduates will demonstrate the ability to use his/her knowledge of effective verbal, nonverbal, and media communication techniques to foster active inquiry, collaboration, and supportive interaction in the classroom.

7. Instructional Planning

Our graduates will demonstrate the ability to design and plan instruction based on knowledge of content and pedagogy, knowledge of students, knowledge of resources, and knowledge of learning goals.

8. Assessment of Student Learning

Our graduates will demonstrate the ability to use multiple types of both formal and informal assessment strategies to evaluate and ensure the continual development for all learners.

9. Reflection and Professional Development

Our graduates will demonstrate the professional skills, responsibilities, attitudes and ethical values of a reflective practitioner who continually evaluates the effects of his/her choices and actions on others (students, parents, and professionals in the learning community), actively seeking out opportunities to grow professionally, change as necessary, and participate in the school improvement process.

10. Collaboration

Our graduates will demonstrate the ability to establish collegial relationships with school colleagues, parents, and agencies in the larger community to support students' learning and well being.

11. Integrating Content

Our graduates will demonstrate the ability to integrate across and within content fields to enrich the curriculum, develop reading and thinking skills, and facilitate all students' abilities to understand relationships between subject areas.

12. Instructional Technology

Our graduates will demonstrate the ability to use skills in technology to gather and analyze information, enhance instructional practices, facilitate professional productivity, assist with educational change, and help all students use instructional technology effectively.

13. Foundations of Education

Our graduates will demonstrate the ability to be reflective practitioners who use knowledge of historical, philosophical, and social foundations of education to guide educational practices.

14. Law and Policies

Our graduates will demonstrate an understanding of school law, educational policies, local, state and national educational structures, professional licensing procedures, and professional organizations.

15. **Conceptual Framework**

Our graduates will demonstrate an understanding of the SOE Conceptual Framework which is defined as the Mission, Vision, Beliefs, Commitments, Program Objectives, Essential Characteristics (Personal and Professional Skills and Dispositions), and Evaluation Process.

In the near future there will be new Kansas Professional Education Standards adopted by the Kansas State Board of Education. To be current in the field upon graduation candidates will need to transition to the new standards as soon as they are officially adopted. The new standards, pending adoption, can be found in Appendix S

U-SOE Essential Characteristics

The Baker University undergraduate teacher education program believes there are essential characteristics that must be associated with becoming a confident and competent educational leader. These essential characteristics are divided into two primary areas of personal and professional skills and dispositions. These personal and professional skills and dispositions can be developed to some degree as one proceeds through the program; however, the department believes that the candidates must bring some levels of these skills and dispositions to the program if they hope to be successful in helping learners develop to their full potential. Instructors of teacher candidates make determinations in each professional and content area course relative to the degree that these skills and dispositions are possessed by the candidates. Instructors are requested to make these important assessments in light of what the student demonstrates as part of the course activities. (See Appendix F.)

Personal and Professional Skills

The Department evaluates seven Personal and Professional Skills that are associated with becoming a confident and competent educational leader. These skills require the candidate to demonstrate:

- 1. Professional responsibility and dependability** that enable the candidate to assume responsibility for assignments, attend class regularly, plan, schedule, and meet time lines;
- 2. Dispositions for teaching** that enable candidates to be enthusiastic, be able to relate to others and accept individual differences, be open to new ideas, and be willing to address personal weaknesses;
- 3. General emotional maturity** that enables candidates to take personal responsibility for their own actions and results (e.g. not engaging in personal conversations during class);
- 4. Written communication skills** that enable the candidate to express ideas clearly, using good writing conventions, organization, and focus;
- 5. Oral communication skills** that enable the candidate to clearly articulate oral comments and interact with individuals and groups; and
- 6. Problem solving, creativity, and critical thinking skills** that enable the candidate to think critically and use problem-solving skills and originality.
- 7. Potential for teaching success**

Personal and Professional Skills Surveys (PPSS) are completed by instructors of all professional education courses (with the exception of practicum courses). Candidates receive results of their ratings every semester and those who do not demonstrate adequate skills at the outset have subsequent opportunities for improvement in future classes. Refer to “Personal and Professional Skills Survey” (Appendix F).

Should it be necessary for a candidate to retake a course, the most recent survey from that course will replace the prior survey in calculating the composite average.

Dispositions

The Department defines dispositions as patterns of behaviors that are influenced by beliefs and values. The dispositions curriculum is integrated throughout the program and instructors in several professional education courses rate candidates on the four dimensions listed below. Follow-up conferences are conducted with candidates who score low on the dispositions rubric. The purpose of the conferences is to increase awareness of the dispositions that are expected of effective and caring educational leaders. Refer to “Dispositions” (Appendix G).

Baker SOE Candidates...

1. Demonstrate a belief that all students and/or people are capable of learning;
2. Model ethical behavior and treat others with fairness, dignity and respect;
3. Demonstrate that they consider the attitudes, feelings, cultural contexts and contributions of others when communicating or interacting;
4. Demonstrate a process of thoughtful engagement, critical thinking, and a willingness to consider alternative ideas/viewpoints.

Kansas State Department of Education Code of Conduct

The professional educator shall work in the best interest of their students and honor their responsibilities to their students, school, district, community, state, and profession as evidenced by:

- Responsibilities to Student
- Responsibilities to District
- Responsibilities to Profession

Candidates need to be aware of and should adhere to the Kansas Educator Code of Conduct. (See Appendix H for the Code of Conduct.) The entire Kansas Educator Code of Conduct is on the KSDE website: http://www.ksde.org/Portals/0/TLA/Licensure/KS_Ed_Code_Conduct_Brochure031014.pdf

U-SOE Evaluation Process

In order to continually monitor progress and identify program strengths and weaknesses, the School of Education (SOE) intentionally included an evaluation process within the conceptual framework. This evaluation process enables the SOE to assess, both internally and externally, candidate progress, the scope and quality of programs, effectiveness of operation, faculty competency, and graduate performance. The undergraduate department adheres to the following Evaluation Process.

The undergraduate department will:

1. Schedule meetings:
 - a. A minimum of twice monthly with the undergraduate Chair of Teacher Education and all full-time undergraduate School of Education faculty and staff members;
 - b. Monthly with the Council for Undergraduate Teacher Education ;
 - c. A minimum of once each year with the Education Advisory Council; and

- d. Regularly with public school officials and staff members to develop/maintain Professional Development School (PDS) agreements between the School of Education and school partners.
2. Monitor all teacher education candidates on a regular and systematic basis. All pre-candidates and candidates (Stages 1-5) will be closely monitored by the department faculty and staff members. Program data will be collected on all candidates in Stages 1-5. At the end of each grading period in which a candidate completes a course, the candidate will be informed in writing of his or her professional progress, unless a candidate notifies the department of his or her intent to drop the program. This letter will identify the status of each candidate and may indicate specific deficiencies. The candidate's advisor will be provided a copy of the updated information. Candidates who fall in the Probationary status will be contacted by the department chair and discuss current status and program completion or degree options. Criteria for admission to Stage 2 Student Teaching can be found in table form in Appendix N.
 3. Utilize the following evaluation instruments with the stated frequency:
 - a. IDEA Student Ratings of Instruction - The IDEA evaluation is completed by program candidates at the end of each course. These forms are summarized by IDEA for each faculty member to use for instructional improvement.
 - b. Classroom Evaluation of Instruction - Evaluations are completed regularly by the U-SOE Undergraduate Department Chair for all faculty (University requirement).
 - c. Student Teacher Evaluation Form - This form is completed by supervising teachers during every student teacher on-site visit.
 - d. Student Teacher Evaluation Form - This form is completed twice during the student teaching semester by cooperating teachers. (See Appendix C)
 - e. Graduate Reflection Form - This form is completed by program graduates the first and third years after graduation. (See Appendix D)
 - f. Graduate Evaluation Form - This form is completed by public/private school building principals during the graduate's first and third years after graduation. (See Appendix E)
 - g. Personal and Professional Skills Survey - This form is completed by instructors of all professional education courses (with the exception of practicum courses). (See Appendix F)
 - h. Instrument for Measuring Candidate Dispositions - The candidate's dispositions are assessed in each of the professional education courses in the manner explained in the dispositions curriculum. (See Appendix G)
 - i. Program Rubrics - Program rubrics, such as the lesson plan rubric, assess professional and pedagogical knowledge and skills. These are completed several times during the candidate's program.
 - j. Program Portfolios - Developmental and professional portfolios are assessed for all candidates during their student teaching semester.

The results of the Personal and Professional Skills Surveys, completed by faculty in all professional education courses (with the exception of practicum courses), are used as one of the program screening devices. The results of the dispositions assessments are used to counsel candidates regarding the match of their beliefs and values with professional expectations. Data collected on candidate performance on program rubrics, portfolios, Student Teacher Evaluation Forms, Graduate Reflection Forms, and Graduate Evaluation Forms are used to assess candidate effectiveness. The summarized results gathered from the above assessments are reviewed annually by the undergraduate department staff, the Education Advisory Council, and the Council for Undergraduate Teacher Education for the purpose of evaluating and making recommended program changes.

4. Evaluate candidate skills through C-BASE or PPST scores, Personal and Professional Skills Survey, Dispositions Survey results, and grade point averages (particularly in professional courses and major content courses) to determine the program progress of candidates or potential candidates.
5. Compile an annual Outcomes Assessment Report and use this information as a basis for making annual recommendations to the Council for Undergraduate Teacher Education for revisions of the conceptual framework, policies, assessments, programs, and operational procedures.

It is the Department's belief that developing confident and competent educational leaders implies that all candidates will be provided with the expectations and opportunities to develop all necessary skills. However, the candidates' success will be based not only on opportunities to develop skills but also on their desire, commitment, performance, and efforts.

Conceptual Framework Undergraduate Research Base

The research base used to support the undergraduate Baker University teacher education programs includes the Interstate New Teacher Assessment and Support Consortium (INTASC) Standards, the National Board for Professional Teaching Standards (NBPTS), and Charlotte Danielson's *Enhancing Professional Practice: A Framework for Teaching*.

- A. The first 10 program objectives mirror the INTASC standards. The first 13 are closely related to the Kansas Professional Education Standards adopted by the Kansas State Board of Education September 2008, with revisions aligned with the writings of Charlotte Danielson. Program Objectives 14 and 15 are unique to Baker University's undergraduate teacher education program.
- B. The U-SOE Commitments incorporate the Five Core Propositions of the National Board for Professional Teaching Standards (NBPTS).
- C. The Professional Skills reflect perceptions used by the Gallup Poll to assess competence of beginning teachers.

SECTION X GOVERNANCE

Undergraduate School of Education Faculty & Staff

Tes Mehring	Dean of the School of Education	Case 200 & Overland Park	913-344-1236
Jeanne Duncan	Director of Assessment	Case 205 C	785-594-4518
Verneda Edwards	Department Chair, Physical Education	Case 205 B	913-344-1227
Jim Foil	Assistant Professor	Case 202	785-594-8368
Charlsie Prosser	Assistant Professor	Case 203	785-594-4593
Merrie Skaggs	Supervisor of Field Experience	Off campus	785-766-7632
Tonya Simms	SOE Licensure Officer & Assessment Coordinator	Case 205A	785-594-4502
Amy Wintermantel	Associate Professor, Department Chair, School of Education	Case 201	785-594-4583

Governance Policies and Procedures

The School of Education administration, faculty, and staff play a major role in formulating policy recommendations; however, all policies must be approved by a variety of groups. The following groups and/or persons determine policy decisions for the undergraduate department:

1. Council for Undergraduate Teacher Education (CUTE)
 - a. **COMPOSITION:** The CUTE shall consist of all SOE Undergraduate Department of Education Teaching Faculty, Chair of Education, Chair of Physical Education, two representatives from PK-12, two teacher education candidates (one elementary and one middle/secondary) and one representative from each CAS department offering discipline courses leading to teacher licensure. The CAS representatives will be appointed by the Dean of CAS. The SOE Dean shall serve ex officio without vote.
 - b. **CHAIR:** The USOE Department of Education Chair shall serve as the CUTE committee chair.
 - c. **RESPONSIBILITIES:** The responsibilities of the CUTE are:
 - (1) To review and modify functional policies for undergraduate Teacher Education Programs
 - (2) To review procedures and regulations for admission and retention to undergraduate Teacher Education Programs
 - (3) To decide individual candidate admission to the undergraduate Teacher Education Program compliance with all external agencies and guidelines
 - (4) To review assessment data for candidates in teacher education licensure programs of study, making recommendations as appropriate for program changes
 - (5) To inform CAS academic departments and disciplines that in collaboration with SOE offer coursework leading to teacher licensure of licensure and accreditation requirements about program specific data, licensure and accreditation requirements.
 - (6) CAS disciplines will retain authority to determine the undergraduate general education curriculum for undergraduate teacher education candidates AND courses required within CAS majors.

2. SOE Faculty Senate

The SOE Faculty Senate serves as the policy body for the School of Education. The SOE Faculty Senate consists of the chairs of the undergraduate and graduate departments of education, the Dean of the SOE (ex-officio with voice, but without voting privileges), the CAS and SPGS Directors of Academic Records or designee (ex-officio with voice and vote), an Education Leadership Club officer, and all SOE faculty/staff who serve more than half-time contracts.

The purpose and responsibilities of the SOE Faculty Senate are the following:

- a) Serve as the policy body for programs and courses offered by Baker University through the School of Education. In addition, the SOE Faculty Senate will approve all SOE program policy handbooks.
- b) Be responsible, in consultation with the SOE Dean, for amendments to the SOE-related sections of the Baker University Faculty Constitution, which shall be submitted to the University Academic Council and are subject to approval by the Board of Trustees.
- c) Review and make recommendations regarding admission, program progress and degree requirements. The CAS ASEM Committee will continue to set academic entry standards for undergraduate candidates.
- d) Recommend academic programs, curriculum, policies and procedures for the undergraduate and graduate education programs. The CAS will retain the authority to determine the undergraduate general education curriculum for all SOE undergraduate candidates.
- e) Recommend undergraduate and graduate program evaluation and assessment requirements including admission, candidate progress, and graduation requirements for all education programs.
- f) Evaluate and analyze program data and formulate recommendations for program change.
- g) Make recommendations to the SOE Dean for policy and program change.
- h) Review candidate progress and approve undergraduate and graduate candidates for degrees.
- i) Make recommendations for faculty growth and development.
- j) Approve faculty orientation programs for adjunct faculty.
- k) Approve the faculty evaluation and/or peer review program.
- l) Serve as a resource to the Faculty Development and Evaluation Committees in the promotion and tenure review of SOE faculty.

3. SOE Education Advisory Council (EAC)

The Education Advisory Council shall serve in an advisory capacity to the School of Education. The Council will meet annually to evaluate program data and make recommendations for program change. The Council will be composed of all half-time or more SOE faculty members, as well as selected teacher education candidates, educators who are former graduates of the SOE, and public school administrators who have demonstrated an interest in the university.

The primary responsibilities of the SOE Education Advisory Council are to:

- a. Assist the department in defining and modifying the department's conceptual framework;
- b. Annually review data, programs, assessment plans, and evaluation instruments,
- c. Provide advisory feedback regarding programs, changes and/or modifications, and suggest future direction; and
- d. Assist and advise the department regarding the ongoing evaluation reviews.

4. Other university personnel are involved in departmental decisions.

- A. The Dean of the School of Education plays an important role in the employment of all faculty members.

(The U-SOE chair, in consultation with department faculty, identifies part-time faculty and makes employment recommendations to the SOE dean.)

- B. The University Controller, Dean of the School of Education, President's Office and the Board of Trustees each play a role in budgeting for the department.
- C. All curricular changes that are requested by the department and result in the addition or deletion of courses must be approved in sequence by the following groups:
 - 1) Council for Undergraduate Teacher Education;
 - 2) SOE Faculty Senate;
 - 3) University Academic Council; and
 - 4) Baker University Board of Trustees.

See Appendix B for the “Baker University Governance Structure for the School of Education.”

Revisions of the *Teacher Education Policy and Programs Handbook (TEPPH)*

Substantive revisions of this handbook must be approved by a majority vote of the Council for Undergraduate Teacher Education;

**SECTION XI
APPENDICES**

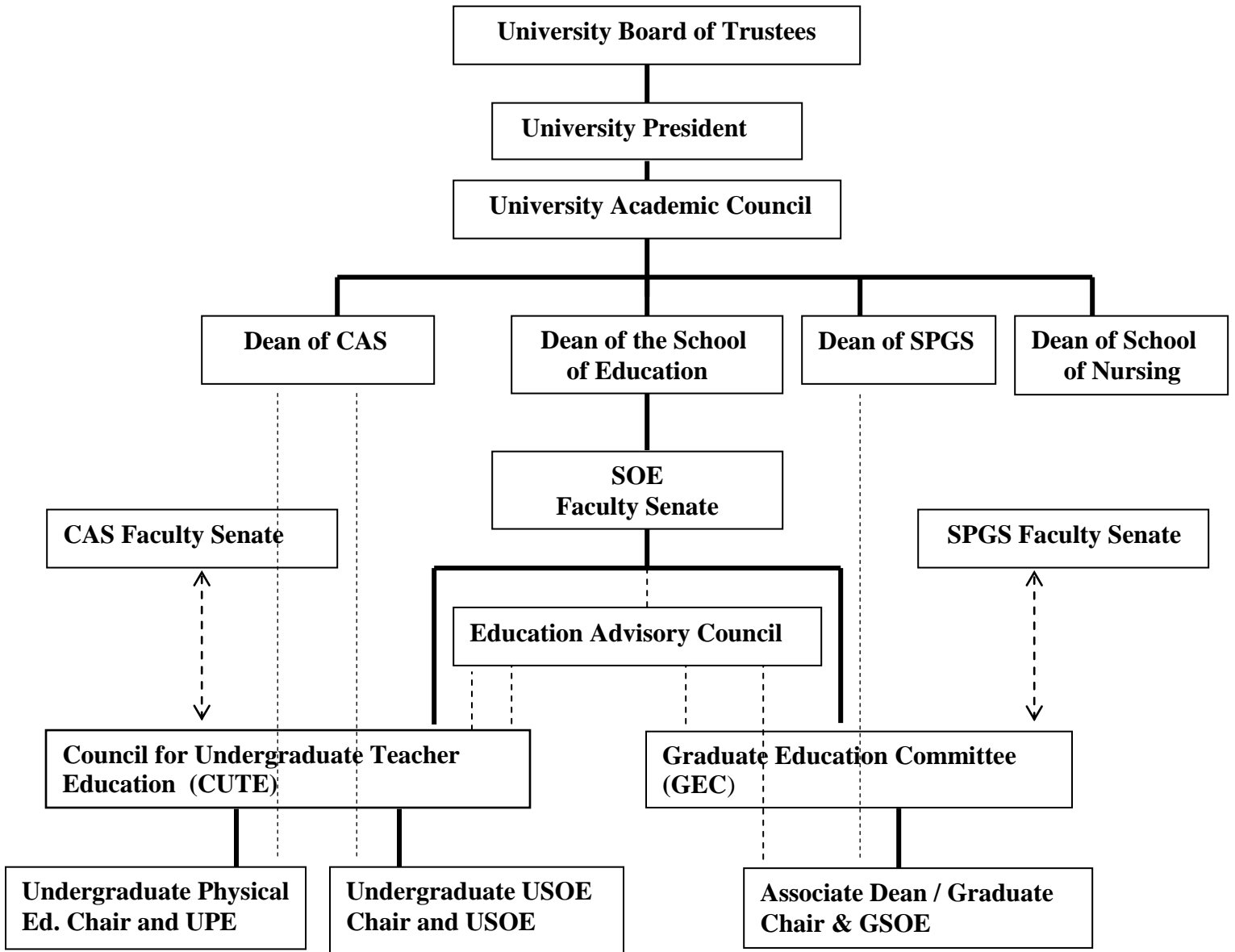
APPENDIX A

Matrix Associating Program Objectives to Courses

Courses	Program Objectives														
	1	2	3	4	5	6	7	8	9	10	11	12	13	14	15
ED 100 Teach. as Career			X						X	X		X	X		X
ED 243 Intro to Ed.	X		X	X	X	X	X	X	X	X		X	X	X	X
ED 264 Clsrn Mgmt	X		X		X	X	X		X					X	X
ED 265 Tech for Teacher	X					X			X			X			X
ED 309 Eval. Techniques			X	X		X		X	X	X	X	X		X	X
ED 313 Teaching ELL	X	X	X	X	X	X	X		X		X				X
ED 320 Field Serv. Pract.					X	X			X			X			
ED 343 Ed. Psych.	X	X	X	X	X	X	X	X	X	X		X			X
ED 345 Psych of Except.			X						X	X		X		X	X
ED 366 and ED 368 Teaching. . .Areas	X	X	X	X	X	X	X	X	X		X	X		X	X
ED 440/460 Methods	X	X	X	X	X	X	X	X	X	X	X	X	X	X	X
ED 462 Ed. Orientation			X			X			X	X	X	X			X
ED 450/470 St. Teaching	X	X	X	X	X	X	X	X	X	X	X	X	X	X	
IS 199 Diversity In Ed.	X		X			X			X	X		X			
PY 111 General Psych.		X													
PY 243 Human Dev.		X													

APPENDIX B

**BAKER UNIVERSITY
GOVERNANCE STRUCTURE FOR THE SCHOOL OF EDUCATION**



Reporting Lines ———

Communications Lines - - - - -

Faculty Senate endorsement and/or recommendation for change <- - - >

The School of Education (SOE) undergraduate and graduate Chairs, and/or their representatives, serve on the respective CAS and SPGS Faculty Senates and EPCs and communicate with (not report to) the respective Deans to ensure communication and compliance with all licensure programs. All reporting lines move upward.

APPENDIX C

Baker University
Student Teacher Evaluation Form
To be filled out by the Cooperating Teacher

First Evaluation Final Evaluation
Please return this form to the Baker University Licensure Officer in the envelope provided.

Student Teacher -

School -

Subject or Grade -

Candidates are to be evaluated by the following rubric and comments are to be included regarding observations made.

Table with 6 columns: N/O (Not Observed), 1 (Unsatisfactory), 2 (Not ready to assume responsibility for classroom), 3 (Basic), 4 (Meets expected skills of a beginning teacher), 5 (Distinguished)

This Baker University student teacher demonstrates:

N/O 1 2 3 4 5

Making Content Meaningful

- 1. The ability to use the central concepts, tools of inquiry, and structure of the discipline as s/he teaches creating learning opportunities, including integrated learning experiences that make these aspects of subject matter meaningful for all students.

Comments:

Human Development and Learning

- 2. The ability to engage students in learning through the use of multiple and effective instructional strategies appropriate to students' developmental levels and knowledge of content.

Comments:

Diverse Learners

- 3. The ability to use information about students' interests, abilities, skills, backgrounds, and peer relationships to make knowledge accessible to all students, including students with exceptionalities and diverse learners.

Comments:

Instructional Strategies

- 4. The ability to use a variety of appropriate instructional strategies to encourage the students' development of critical thinking, problem solving, and reading.

Comments:

Motivation and Classroom Management

- 5. An understanding of individual and group motivation and student behavior that fosters positive and safe learning environments and encourages positive social interaction, active engagement in learning, and self motivation.

Comments:

Communication

- 6. The ability to use his/her knowledge of effective verbal, nonverbal, and media communication techniques to foster active inquiry, collaboration, and supportive interaction in the classroom.

Comments:

Instructional Planning

7. The ability to design and plan instruction based on knowledge of content and pedagogy, knowledge of students, knowledge of resources, and knowledge of learning goals. _____

Comments:

Assessment of Student Learning

8. The ability to use multiple types of both formal and informal assessment strategies to evaluate and ensure the continual development for all learners. _____

Comments:

Reflection and Professional Development

9. The professional skills, responsibilities, attitudes and ethical values of a reflective practitioner who continually evaluates the effects of his/her choices and actions on others (students, parents, and professionals in the learning community), actively seeking out opportunities to grow professionally, change as necessary and participate in the school improvement process. _____

Comments:

Collaboration

10. The ability to establish collegial relationships with school colleagues, parents, and agencies in the larger community to support students' learning and well being. _____

Comments:

Integrating Content

11. The ability to integrate across and within content fields to enrich the curriculum, develop reading and thinking skills, and facilitate all students' abilities to understand relationships between subject areas. _____

Comments:

Instructional Technology

12. The ability to use skills in technology to gather and analyze information, enhance instructional practice, facilitate professional productivity, assist with educational change, and help all students use instructional technology effectively _____

Comments:

This Baker University student teacher also demonstrates:

N/O 1 2 3 4 5

The ability to receive and respond to suggestions and criticism. _____

Comments:

Signature _____
Cooperating Teacher

Date _____

Thank you for your assistance in helping to develop a future educator.

BAKER UNIVERSITY STUDENT TEACHER EVALUATION FORM

Student Teacher

School

Date

Supervising Teacher

Cooperating Teacher

Subject/Grade

I visited with the Cooperating teacher: Yes _____ No _____

Candidates are to be evaluated by the following rubric and comments are to be included regarding observations made.

N/O	1	2	3	4	5
Not Observed	Unsatisfactory	Not ready to assume responsibility for classroom	Basic	Meets expected skills of a beginning teacher	Distinguished

This Baker University student teacher demonstrates: N/O 1 2 3 4 5

Making Content Meaningful _____

1. The ability to use the central concepts, tools of inquiry, and structure of the discipline as s/he teaches creating learning opportunities, including integrated learning experiences that make these aspects of subject matter meaningful for all students.

Comments:

Human Development and Learning _____

2. The ability to engage students in learning through the use of multiple and effective instructional strategies appropriate to students' developmental levels and knowledge of content.

Comments:

Diverse Learners _____

3. The ability to use information about students' interests, abilities, skills, backgrounds, and peer relationships to make knowledge accessible to all students, including students with exceptionalities and diverse learners.

Comments:

Instructional Strategies _____

4. The ability to use a variety of appropriate instructional strategies to encourage the students' development of critical thinking, problem solving, and reading.

Comments:

Motivation and Classroom Management _____

5. An understanding of individual and group motivation and student behavior that fosters positive and safe learning environments and encourages positive social interaction, active engagement in learning, and self motivation.

Comments:

Communication _____

6. The ability to use his/her knowledge of effective verbal, nonverbal, and media communication techniques to foster active inquiry, collaboration, and supportive interaction in the classroom.

Comments:

Instructional Planning _____

7. The ability to design and plan instruction based on knowledge of content and pedagogy, knowledge of students, knowledge of resources, and knowledge of learning goals.

Comments:

Assessment of Student Learning _____

- 8. The ability to use multiple types of both formal and informal assessment strategies to evaluate and ensure the continual development for all learners.

Comments:

Reflection and Professional Development _____

- 9. The professional skills, responsibilities, attitudes and ethical values of a reflective practitioner who continually evaluates the effects of his/her choices and actions on others (students, parents, and professionals in the learning community), actively seeking out opportunities to grow professionally, change as necessary and participate in the school improvement process.

Comments:

Collaboration _____

- 10. The ability to establish collegial relationships with school colleagues, parents, and agencies in the larger community to support students' learning and well-being.

Comments:

Integrating Content _____

- 11. The ability to integrate across and within content fields to enrich the curriculum, develop reading and thinking skills, and facilitate all students' abilities to understand relationships between subject areas.

Comments:

Instructional Technology _____

- 12. The ability to use skills in technology to gather and analyze information, enhance instructional practice, facilitate professional productivity, assist with educational change, and help all students use instructional technology effectively

Comments:

This Baker University student teacher also demonstrates:

N/O 1 2 3 4 5

The ability to receive and respond to suggestions and criticism.

Comments:

Student Strengths:

Goals:

Student Teacher Comments:

Student Teacher Signature

Supervising Teacher Signature

Date

APPENDIX D

BAKER UNIVERSITY GRADUATE REFLECTION FORM

This checklist is one means that the Baker University School of Education uses to evaluate the effectiveness and growth of our graduates in areas that the Department deems important in becoming confident and competent educational leaders. Please check each criteria listed below. Column 1 suggests unsatisfactory ability; 2 = below average ability; 3 = average ability; 4 = above average ability; and 5 = very strong ability. Please use N/O if you have not had the opportunity to observe.

Please indicate how you perceive your ability to meet the competencies listed below.

This Baker University student teacher demonstrates:

N/O 1 2 3 4 5

Making Content Meaningful

1. The ability to use the central concepts, tools of inquiry, and structure of the discipline as s/he teaches, creating learning opportunities, including integrated learning experiences that make these aspects of subject matter meaningful for all students. _____

Human Development and Learning

2. The ability to engage students in learning through the use of multiple and effective instructional strategies appropriate to students' developmental levels and knowledge of content. _____

Diverse Learners

3. The ability to use information about students' interests, abilities, skills, backgrounds, and peer relationships to make knowledge accessible to all students, including students with exceptionalities and diverse learners. _____

Instructional Strategies

4. The ability to use a variety of appropriate instructional strategies to encourage the students' development of critical thinking, problem solving, and reading. _____

Motivation and Classroom Management

5. An understanding of individual and group motivation and student behavior that fosters positive and safe learning environments and encourages positive social interaction, active engagement in learning, and self motivation. _____

Communication

6. The ability to use his/her knowledge of effective verbal, nonverbal, and media communication techniques to foster active inquiry, collaboration, and supportive interaction in the classroom. _____

Instructional Planning

7. The ability to design and plan instruction based on knowledge of content and pedagogy, knowledge of students, knowledge of resources, and knowledge of learning goals. _____

Assessment of Student Learning

8. The ability to use multiple types of both formal and informal assessment strategies to evaluate and ensure the continual development for all learners. _____

Reflection and Professional Development

9. The professional skills, responsibilities, attitudes and ethical values of a reflective practitioner who continually evaluates the effects of his/her choices and actions on others (students, parents, and professionals in the learning community), actively seeking out opportunities to grow professionally, change as necessary and participate in the school improvement process. _____

Collaboration

10. The ability to establish collegial relationships with school colleagues, parents, and agencies in the larger community to support students' learning and well being. _____

Integrating Content

11. The ability to integrate across and within content fields to enrich the curriculum, develop reading and thinking skills, and facilitate all students' abilities to understand relationships between subject areas. _____

Instructional Technology

12. The ability to use skills in technology to gather and analyze information, enhance instructional practice, facilitate professional productivity, assist with educational change, and help all students use instructional technology effectively _____

This Baker University student teacher also demonstrates:

N/O 1 2 3 4 5

The ability to receive and respond to suggestions and criticism. _____

My teaching preparation was for: _____ secondary; _____ elementary; or _____ PreK-12. Gender _____ (M/F)

Ethnic background (optional): _____ African American; _____ Asian; _____ Caucasian; _____ Hispanic; _____ Native American; _____ Other.

Year completed Baker Teacher Education Program _____.

Please respond to the following questions using a scale of 1 to 5 (1=not at all to 5=very well)

1. Were you pleased with the Baker Teacher Education Program? _____
2. How well did Baker prepare you for the teaching occupation? _____

Comments can be made on the back of this page. Thank you for participating in this survey.

APPENDIX E
BAKER UNIVERSITY FIRST/THIRD YEAR TEACHER GRADUATE EVALUATION FORM

Baker University Graduate _____ School _____

Year Graduate Completed Program _____ Date of Survey _____

The Baker University School of Education evaluates the effectiveness and growth of their graduates on program objectives aligned with becoming confident and competent educational leaders. Please evaluate each criteria listed below, or use N/O if you have not had the opportunity to observe. Scores: 1 suggests unsatisfactory ability; 2 = below average ability; 3 = average ability; 4 = above average ability; and 5 = very strong ability.

This Baker University graduate demonstrates: N/O 1 2 3 4 5

Making Content Meaningful

- 1. The ability to use the central concepts, tools of inquiry, and structures of the discipline as s/he teaches, creating learning opportunities, including integrated learning experiences that make these aspects of subject matter meaningful for all students. _____

Human Development and Learning

- 2. The ability to engage students in learning through the use of multiple and effective instructional strategies appropriate to students' developmental levels and knowledge of content. _____

Diverse Learners

- 3. The ability to use information about students' interests, abilities, skills, backgrounds, and peer relationships to make knowledge accessible to all students, including students with exceptionalities and diverse learners. _____

Instructional Strategies

- 4. The ability to use a variety of appropriate instructional strategies to encourage the students' development of critical thinking, problem solving, and reading. _____

Motivation and Classroom Management

- 5. An understanding of individual and group motivation and student behavior that fosters positive and safe learning environments and encourages positive social interaction, active engagement in learning, and self motivation. _____

Communication

- 6. The ability to use his/her knowledge of effective verbal, nonverbal, and media communication techniques to foster active inquiry, collaboration, and supportive interaction in the classroom. _____

Instructional Planning

- 7. The ability to design and plan instruction based on knowledge of content and pedagogy, knowledge of students, knowledge of resources, and knowledge of learning goals. _____

Assessment of Student Learning

- 8. The ability to use multiple types of both formal and informal assessment strategies to evaluate and ensure the continual development for all learners. _____

Reflection and Professional Development

- 9. The profession skills, responsibilities, attitudes and ethical values of a reflective practitioner who continually evaluates the effects of his/her choices and actions on others (students, parents, and professionals in the learning community), actively seeking out opportunities to grow professionally, change as necessary and participate in the school improvement process. _____

Collaboration

- 10. The ability to establish collegial relationships with school colleagues, parents, and agencies in the larger community to support students' learning and well being. _____

Integrating Content

- 11. The ability to integrate across and within content fields to enrich the curriculum, develop reading and thinking skills, and facilitate all students' abilities to understand relationships between subject areas. _____

Instructional Technology

- 12. The ability to use skills in technology to gather and analyze information, enhance instructional practices, facilitate professional productivity, assist with educational change, and help all students use instructional technology effectively. _____

This Baker University graduate also demonstrates:

- 13. The ability to receive and respond to suggestions and criticism. _____

Signature

Date

Thank you for your participation in this survey. Your input is valued and will be used to help us evaluate and/or modify the Baker University Teacher Education Program. Please feel free to add any additional comments on the back of this form.

APPENDIX F
PERSONAL AND PROFESSIONAL SKILLS SURVEY

An Instructor's Rating of the Prospective Teacher

Name of Candidate _____ Instructor _____

Course being evaluated **this semester** _____ Date _____

1 = unsatisfactory ability; 2 = not ready to assume responsibility for classroom; 3 = basic ability; 4 = meets expected skills of a beginning teacher; and 5 = distinguished.

	1	2	3	4	5
Professional Responsibility and Dependability (x3) Exhibits skills that enable candidates to assume responsibility for quality and timely class assignments, active class participation, and attendance.	Unsatisfactory in one or more areas.	Emerging confidence in one or more areas but is not yet ready to assume responsibility for a classroom.	Basic competency noted with most expectations being met and demonstrates a developing competence in areas of need.	Confident and competent in all areas; all expectations are met.	Impressive professionalism exhibited in all areas. Outside distractions rarely if ever interfered with timeliness in assignments and or attendance. Exceeds expectations of a beginning teacher.
Disposition for Teaching (x3) Engaging, ability to relate to others, acceptance of individual difference, and belief that all can learn, treats others with dignity and respect and willingness to address personal weakness.	Unsatisfactory in one or more areas.	Emerging confidence in one or more areas but is not yet ready to assume responsibility for a classroom.	Basic competency noted with most expectations being met and demonstrates a developing competence in areas of need.	Confident and competent in all areas; all expectations are met.	Impressive professionalism exhibited in all areas; exceeds expectations of a beginning teacher.
General Emotional Maturity (x3) Demonstrates on-task behaviors, takes personal responsibility for own actions and results, uses technology appropriately, treats others with dignity and respect.	Unsatisfactory in one or more areas.	Emerging confidence in one or more areas but is not yet ready to assume responsibility for a classroom.	Basic competency noted with most expectations being met and demonstrates a developing competence in areas of need.	Confident and competent in all areas; all expectations are met.	Impressive professionalism exhibited in all areas; exceeds expectations of a beginning teacher.
Written Communication Skills The ability to legibly write ideas clearly, using good writing conventions, organization, and focus.	Unsatisfactory in one or more areas.	Emerging confidence in one or more areas but is not yet ready to assume responsibility for a classroom.	Basic competency noted with most expectations being met and demonstrates a developing competence in areas of need.	Confident and competent in all areas; all expectations are met.	Stellar on conventions; organization & flow greatly facilitate understanding the content as do sentence fluency and word choice; two or fewer mistakes. Exceeds expectations of a beginning teacher.
Oral Communication Skills The ability to articulate and interact with individuals and groups, taking into consideration the attitudes, feelings, cultural context, and others' contributions..	Unsatisfactory in one or more areas.	Emerging confidence in one or more areas but is not yet ready to assume responsibility for a classroom.	Basic competency noted with most expectations being met and demonstrates a developing competence in areas of need.	Confident and competent in all areas; all expectations are met.	Fluidity, clarity, and confidence are the springboard for all communication. The candidate is at ease in front of groups and individuals and puts others at ease. Exceeds expectations of a beginning teacher.
Problem Solving, Creativity, & Critical Thinking Skills The ability to think critically and use problem-solving skills and originality	Unsatisfactory in one or more areas.	Emerging confidence in one or more areas but is not yet ready to assume responsibility for a classroom.	Basic competency noted with most expectations being met and demonstrates a developing competence in areas of need.	Confident and competent in all areas; all expectations are met.	Virtually all verbal and written products show a level of thought, problem solving, and/or originality not common to other candidates. Exceeds expectations.
Potential for Teaching Success Overall rating of this student as a candidate for the teaching profession.	Limited potential noted.	Emerging confidence in one or more areas but is not yet ready to assume responsibility for a classroom.	Basic competency noted with most expectations being met and demonstrates a developing competence in areas of need.	Confident and competent in all areas; all expectations are met.	Distinguished; exceeds expectations of a beginning teacher.

APPENDIX G

BAKER UNIVERSITY SCHOOL OF EDUCATION UNDERGRADUATE DISPOSITIONS

Candidate _____ Course Number _____ Date _____

Dispositions are assessed formally and informally and not limited to the following settings: professional education coursework, course discussions, assignments, field experiences, practicum settings, clinical experiences and personal conduct.

Dispositions Ratings

Unsatisfactory (0-6)	Basic (7)	Proficient (8-9)	Distinguished (10)
-------------------------	--------------	---------------------	-----------------------

Dispositions	
Demonstrate a belief that all students and/or people are capable of learning	
<ul style="list-style-type: none"> Provide encouraging feedback to all students/or people Responds to the needs of all learners Provide ongoing, appropriate and developmentally sound assessment to guide instruction Demonstrate an understanding of human development Encourage and implement democratic decision-making Includes appropriate modifications and extensions to enhance students' learning 	
Comments:	
Model ethical behavior and treat others with fairness, dignity and respect	
<ul style="list-style-type: none"> Provide fair and equitable learning opportunities for all Reflect on ethical and moral implications of his/her actions Demonstrate honesty and trustworthiness in communications and interactions Understand the role of confidentiality Describe an example of educational equity for students Advocate for those that are unable to do so 	
Comments:	
Demonstrate that they consider the attitudes, feelings, cultural contexts and contributions of others when communication or interacting	
<ul style="list-style-type: none"> Respect customs and beliefs of diverse groups Reflect on backgrounds, interests, and attitudes of all when planning Collaborate and cooperate with students, families, and community to support learning Use appropriate language in all mediums and situations Maintain emotional control during communication with others Practice respectful communication towards students and peers 	
Comments:	
Demonstrate a process of thoughtful engagement, critical thinking, and a willingness to consider alternative ideas/viewpoints	
<ul style="list-style-type: none"> Are willing to think critically about content, curriculum planning, pedagogy, current technology and assessment Are willing to experiment with new ideas and techniques Seek ways to solve problems using a variety of tools and resources Recognize personal limitations and strengths and seek self-improvement and professional growth Reflect on feedback from a peer or supervisor and give a solution or plan for improvement based on the feedback Make meaningful contributions to the learning processes of others 	
Comments:	

Kansas Educator Code of Conduct

The professional educator shall work in the best interest of their students and honor their responsibilities to their students, school, district, community, state, and profession as evidenced by:

Responsibilities to Student:

- ◆ Refrain from disclosing confidential or damaging information that affects the student
- ◆ Make reasonable effort to protect the student from conditions detrimental to learning, health or safety.
- ◆ Maintain professional relationships with students both inside and outside the classroom
- ◆ Refrain from soliciting, encouraging, participating or initiating inappropriate written, verbal, electronic, physical, sexual, or romantic relationship with students

Responsibilities to District:

- ◆ Adhere to conditions of contractual obligations with professional practice
- ◆ Fulfill reporting requirements honestly and accurately
- ◆ Appropriately use funds, personnel, property, and equipment committed to his or her charge
- ◆ Refrain from falsifying any documents related to the employment process
- ◆ Conduct school district business through established procedures

Responsibilities to Profession:

- ◆ Demonstrate conduct that follows generally recognized professional standards
- ◆ Fulfill all of the terms and obligations detailed in the contract
- ◆ Maintain appropriate licensure for professional practice and employment
- ◆ Provide accurate information to state department
- ◆ Abide by all federal, state, and local laws and employing school board policies

APPENDIX I

SCHOOL OF EDUCATION'S RECOMMENDED STRATEGIES AND BEST PRACTICES

The School of Education believes that the following instructional strategies are supported by research and best practices and should be considered in planning for effective instruction. Furthermore we believe that modeling, one of the identified strategies, is among the most powerful and effective means of ensuring that our candidates learn and apply these important practices. Therefore the Undergraduate Department faculty commit to teaching by incorporating and modeling the following instructional strategies and practices.

The Undergraduate Department of Education faculty will model, use, and encourage:

Actively involving the learner in the learning, including the use of cooperative learning

Effective verbal and non-verbal communication skills

Facilitating vs. lecturing

Setting high expectations for learning

Critical thinking, problem solving, reflection, and inquiry

The use of multiple assessments

Effective questioning techniques and dignifying learner responses

Providing appropriate feedback

Providing guided practice prior to independent practice

Technology that will enhance learning

Clarifying comments follow:

Actively involving the learner in the learning

The faculty will organize the instructional process so that candidates become active participants in the learning process.

Effective verbal and non-verbal communication skills

The faculty will encourage communication skills through group and individual activities including discussion and questioning techniques.

The faculty will also incorporate specific cooperative learning formats and small group work during class sessions.

Facilitating vs. lecturing

The faculty will attempt to break the usual collegiate pattern of lecturing as the main mode of delivery of information. We recognize that what candidates see and have experienced most frequently will imprint and affect future teaching.

High expectations

The faculty will hold high expectations, insisting that candidates successfully learn identified outcomes.

Critical thinking, problem solving, reflection, and inquiry

The faculty will promote problem solving, discovery, active inquiry, and higher levels of Bloom's Taxonomy in planning questioning techniques, assessments, and candidate activities.

The use of multiple assessments

The faculty will utilize multiple and various assessments in evaluating candidates. Peer evaluations will be used to enhance candidate feedback and reflection.

Effective questioning techniques and dignifying learner responses

The faculty will use a number of effective teaching strategies that incorporate effective questioning techniques, dignify learner responses, and provide appropriate wait time.

Providing appropriate feedback

The faculty will ensure that candidates are given appropriate feedback at all times regarding expectations, learning activities, and assessments.

Providing guided practice prior to independent practice

The faculty will ensure that candidates have ample opportunity to practice and have success on learning activities prior to providing independent assignments.

Technology that will enhance learning

The faculty will use technology to enhance instruction. Faculty will make use of technologies both in and out of the classroom and set expectations that candidate learn to use instructional technologies.

APPENDIX J

Academic & Professional Misconduct Policy

Examples of Misconduct; including but not limited to:

		<u>Level I</u>	<u>Level II</u>	<u>Level III</u>
		<p><i>An offense where losing all points would not impact the final grade in the course and/or the offense totally misrepresents the conduct of an aspiring professional educator</i></p> <p><u>Plagiarism</u> Presenting as one’s own efforts the work of someone else without proper acknowledgement (See BU Academic Catalog for full description)</p> <p><u>Cheating</u> Unauthorized use of any assistive measure Allowing someone to copy from your work Copying someone’s work</p> <p><u>Counterfeit Work</u> Submitting work as a group member that you did not do Having someone else complete your assignment</p> <p><u>Theft</u> Using the SOE copier or printer for personal use</p> <p><u>Unauthorized reuse of assignments</u> Submitting work from a different class and/or assignment for a current assignment</p> <p><u>Falsification</u> Misrepresenting reason for absence(s) for a class or practicum</p>	<p><i>An offense where losing all points could impact the final grade in the course and/or the offense totally misrepresents the conduct of an aspiring professional educator</i></p> <p><u>Plagiarism</u> Presenting as one’s own efforts the work of someone else without proper acknowledgement (See BU Academic Catalog for full description)</p> <p><u>Cheating</u> Midterm</p> <p><u>Counterfeit Work</u> Submitting work as a group member when you did not do any of the actual work</p> <p><u>Theft</u> Use or distribution of any type of assignment, answer(s), or assessment specifically prepared for a course</p> <p><u>Unauthorized reuse of assignments</u> Submitting work from a different class and/or assignment for a current assignment</p> <p><u>Falsification</u> Misrepresentation of GPA or other information on resume</p> <p><u>Repeat offense</u></p>	<p><i>An offense where losing all points would impact the final grade in the course and/or the offense totally misrepresents the conduct of an aspiring professional educator</i></p> <p><u>Plagiarism</u> Presenting as one’s own efforts the work of someone else without proper acknowledgement (See BU Academic Catalog for full description)</p> <p><u>Cheating</u> Final</p> <p><u>Counterfeit Work</u> Submitting work as a group member when you did not do any of the actual work</p> <p><u>Theft</u> Use or distribution of any type of assignment, answer(s), or assessment specifically prepared for a course</p> <p><u>Unauthorized reuse of assignments</u> Submitting work from a different class and/or assignment for a current assignment</p> <p><u>Falsification</u> Altering information on any practicum document</p> <p><u>Repeat offense</u></p> <p><u>Unprofessional Conduct</u> Use of social media and/or any technology that in some way degrades or diminishes the being of a K-12 student, peer, or faculty member</p>
Possible Sanctions; including but not		<p>Written warning</p> <p>Reduction of grade that may result in a zero on an assignment</p> <p>Reduction of grade for the course</p> <p>Automatic decrease in Teacher Education Program status for at least two semesters</p>	<p>Any level I sanction</p> <p>Failing the course</p> <p>Transcript citation will be placed on the candidate’s transcript</p> <p>Suspension from the School of Education</p>	<p>Any level I or II sanction</p> <p>Dismissal from the School of Education</p> <p>Suspension from the University</p> <p>Expulsion from the University</p>

APPENDIX K

Baker University Undergraduate Department of Education Technology Expectations

Candidates completing the School of Education undergraduate teacher education program will demonstrate the technology skills identified below. It is assumed that all candidates possess and use the basic skills of word processing, internet access, and email. The SOE expects all candidates to check their Baker University email account daily since this is a primary means of communicating within the department.

Updated August 2015

1. Internet Searches
 - A. ED 243: Candidates find applicable educational resources. Candidates write critiques of two educational websites for their personal files.
 - B. ED 343: Candidates use the internet as a resource for preparing presentation on educational theorist.
 - C. ED 366/ED 368: Candidates use the internet as a resource for writing a unit.
 - D. ED 366/ED 368: Candidates access program standards online and cite standards addressed in writing an integrated unit.
2. PC/Apple Comparison
 - A. ED 265: Candidates will explore Apple platforms
3. Technology-Based Educational Resources, and Software Programs
 - A. ED 309: Candidates use an on-line grade book program to enter student data.
 - B. ED 309: Candidates examine resources on the www.ksde.org site, paying particular attention to the formative state assessment component of the site and write a summary of the resources available on the site.
 - C. ED 265: Candidates create websites that are evaluated with a rubric.
 - D. ED 309: Candidates access www.taskstream.com and create at least one rubric for their authentic assessment assignment.
 - E. ED 345: Candidates examine technology specific to accommodating the needs of diverse students.
 - F. ED 440/460: Candidates will be exposed to electronic to Professional Portfolio options.
4. Electronic Presentation
 - A. ED 343: Candidates prepare electronic presentation over the life and work of an educational theorist.
 - B. ED 366/368: Candidates will create and present an electronic presentation as a Flipped Classroom lesson.
5. Technology Hardware
 - A. ED 265: Candidates examine/interact with current available technology.
 - B. ED 366/ED 368: Candidates will use presentation hardware.
6. E-mail Communication
 - A. ED 244 and ED 320: Candidates will communicate with their PDS mentor teachers via email.
 - B. ED 309: Candidates create a parent communication in response to a parent email.
7. On-line course management system
 - A. Candidates use TaskStream to access assignment guidelines, submit assignments, and examine assignment results via TaskStream rubrics in all professional education courses.

APPENDIX L

COMMUNITY SERVICE

RATIONALE:

The School of Education's Conceptual Framework includes fifteen Program Objectives which "confident and competent educational leaders" possess. One of these competencies relates to the educator's responsibility to the larger community. It is our belief that confident and competent educational leaders must be community participants. Consequently, the teacher education curriculum includes a required community service component.

PROCESS:

To maximize flexibility in service opportunities and scheduling, this requirement is not tied to any particular course, but must be completed by ED 462 Education Orientation Internship. Candidates must provide fifteen (15) hours of unpaid volunteer service at an approved site, beyond the Baker University community, to satisfy this requirement. The documentation form, along with the reflection paper, will be included under section #5 *Community Service Record*. The required documentation form is attached.

GUIDELINES:

Since the purpose of this experience is to **volunteer** at a setting that provides a service to the larger community, several types of placements are possible. Possible opportunities include but are not limited to:

- Habitat for Humanity
- Increased hours in practicum settings
- Boys and Girls Club
- Coaching little league teams
- Sunday/Bible school
- Special Olympics

If unsure, contact a member of the School of Education for approval. Candidates are responsible for contacting the agency, arranging the specifics of the experience, completing the documentation form, and writing the reflective paper.

ASSIGNMENTS:

Candidates are required to write a two-page reflection paper detailing this fifteen-hour experience. This reflection should explain the nature of the volunteer service(s), the particular setting(s), and the social benefits provided by this service. In addition, candidates should focus on the affective component of this experience and reflect on any attitudinal changes facilitated by this experience.

COMMUNITY SERVICE DOCUMENTATION FORM

I hereby attest that I completed the community service hours listed below.

Candidate Signature

Service Site _____

Date	Time	Nature of Duty
------	------	----------------

Service Site _____

Date	Time	Nature of Duty
------	------	----------------

Service Site _____

Date	Time	Nature of Duty
------	------	----------------

APPENDIX M

PLAN FOR ADDRESSING CONCERNS REGARDING CANDIDATE STATUS

Name: _____ Date: _____

Current Candidate Status:

Non-Qualified _____ Probationary Candidate _____ Conditional Candidate _____

Criteria Deficiencies:

1. Current cumulative GPA: _____
 Current GPA for professional and content course: _____
 Candidates must possess a cumulative GPA ≥ 2.8 for all professional & required content area courses, and a cumulative GPA ≥ 2.5 for all college credit taken.
2. Current ratings on Personal and Professional Skills Surveys: _____
 Candidates must possess a composite average ≥ 3.5 (on a 5.0 scale) on the Personal and Professional Skills Surveys.
3. Current ratings on Professional Development School Evaluations: _____
 Candidates must possess a composite average ≥ 3.5 (on a 5.0 scale) on the Professional Development School Evaluations.
4. C-BASE scores: English (235) _____ Writing (235) _____ Math (235) _____
OR
 PPST scores: Reading (173) _____ Math (172) _____ Writing (172) _____
 Candidates must pass all parts of the test. For students having problems passing these tests, we recommend individual tutoring at Sylvan Learning Center.

Other Program Requirement Deficiencies:

1. Professional Education Course Grades: _____
 Candidates must possess a grade of C or above in all education courses.
2. Required Content Course Grades: _____
 Candidates must possess a grade of C or above in all content area courses.
3. General Education Course Grades: _____
 Candidates must possess a grade of C or above in CO 115 or its equivalent.

Goal(s) (including specific areas of concern if known):

Plan:

Signed Statement Regarding Student Status

I am aware that my current status is (Probationary or Conditional). I have read and understand the Probationary and Conditional Candidate requirements explained in the TEPPH and understand that if I do not attain at least conditional status, I will not be allowed to take further education courses. I also understand that I must be a Candidate in Good Standing to enroll in the student teaching semester.

Signature of Candidate

Signature of Faculty Member

Revised Fall 2008

APPENDIX N

Criteria for Admission to Student Teaching

The following table outlines the criteria for “Good Standing” status. Candidates must achieve “Good Standing” status before admission to student teaching will be approved. Please note that either the PPST or the C-BASE test may be used to satisfy the basic skills test.

	Your Scores	Required Scores for Good Standing
Cum GPA:		2.50
Professional and Content Area GPA:		2.80
Average score on Prof. Skills Survey:		3.50
PDS Evaluations		3.50
PPST – Reading or C-BASE – English		173/235
PPST – Writing or C-BASE – Writing		172/235
PPST – Math or C-BASE – Math		172/235
Successfully completed, with a grade of “C” or better, the professional education and content area courses taken to- date.	Yes or No	Deficiency
Successfully completed general education courses PY 111 and PY 243. Successfully completed, with a grade of “C” or better CO 115.	Yes or No	Deficiency

In addition, a candidate in good standing must meet the following requirements to be admitted to student teaching:

- ✓ Completion of all Good Standing requirements
- ✓ Approval from the Council for Undergraduate Teacher Education
- ✓ Completion of 15 hours of community service
- ✓ Completion of the requirements outlined in the Candidate Artifacts Notebook
- ✓ Completion of at least 15 hours of credit from Baker University
- ✓ Completion of an application to student teach
- ✓ Completion of CO 115, PY 111, and PY 243
- ✓ Completion of all professional and content coursework except the student teaching semester

APPENDIX O
LICENSURE REQUIREMENTS FOR CANDIDATES
WHO HAVE PREVIOUSLY EARNED A DEGREE

Student Name _____
Date of Initial Contact

Persons who come to Baker with a baccalaureate degree from an accredited institution and wish to obtain teaching licensure in a field or fields must satisfy the expectations of the School of Education, which operates in concert with the Kansas State Department of Education (KSDE) and the National Council for Accreditation of Teacher Education (NCATE). Baker is accredited by KSDE and NCATE to license teachers in elementary education and a number of secondary fields.

Persons wishing to obtain licensure must successfully satisfy the following:

- I. Possess a cumulative GPA \geq 2.8 for all professional and required content area courses, and possess a cumulative GPA \geq 2.5 for all college credit taken from any campus;
- II. Obtain satisfactory faculty ratings on the Personal and Professional Skills Survey (3.5 on a 5 pt. scale);
- III. Satisfy the following general education course requirements:

	Course	Credit Hrs.	Grade	Sem. Comp.
1. Writing equivalent to English Comp.*	_____	2 - 3	_____	_____
2. Literature	_____	2 - 3	_____	_____
3. History	_____	2 - 3	_____	_____
4. Mathematics (Inter. Algebra* or higher)	_____	2 - 3	_____	_____
5. Science	_____	2 - 3	_____	_____
6. Multicultural or global (could be met by one of the above or IS 199)	_____	2 - 3	_____	_____

*** A grade of C or above required. Grades of "C-" will NOT be accepted**

- IV. Satisfy the following professional education requirements (A grade of C or above required. Grades of "C-" will NOT be accepted):

1. ED 100 Teaching as a Career	_____	1	_____	_____
2. ED 243 Introduction to Education I	_____	2	_____	_____
3. ED 244 Education Field Practicum	_____	1	_____	_____
4. ED 264 Foundations of Classroom Mgmt	_____	1	_____	_____
5. ED 265 Technology for Teachers	_____	1	_____	_____
6. ED 309 Evaluation Techniques for the Classroom	_____	3	_____	_____
7. ED 313 Bilingual Education	_____	3	_____	_____
8. ED 320 Education Field Service Practicum II	_____	1	_____	_____
9. ED 343 Educational Psychology	_____	3	_____	_____
10. ED 345 Psychology of the Exceptional Learner	_____	3	_____	_____
11. ED 366/ED 368 Teaching Reading in Content Areas	_____	3	_____	_____
12. ED 440/460 Pre-Student Teaching Seminar,	_____	3	_____	_____
13. ED 462 Education Orientation Internship	_____	1	_____	_____
14. IS 199 Diversity in Education	_____	3	_____	_____
15. ED 450/470/480 Student Teach. In Elem./Middle/Sec. School	_____	12	_____	_____

Supporting Courses:

CO 115 Oral Communication	_____	3	_____	_____
PY 111 General Psychology	_____	3	_____	_____
PY 243 Human Development	_____	3	_____	_____

- V. Complete the requirements in the major field(s) of endorsement (refer to separate sheet)
- VI. **Complete at least 15 hours of Baker University credit prior to the professional semester. Of these 15 hours, 3 hours must be an upper level Professional Education course.**
- VII. C-BASE scores**: _____ English (235) _____ Writing (235) _____ Math (235) (PPST also accepted)
**College graduates with a cumulative grade point average of 3.0 or above are exempted from C-BASE.
PLT (160) score: _____ The PLT is a licensure requirement and not a program requirement.
Content Area (): _____ The Content Area test is a licensure requirement and not a program requirement.
KPTP (20) _____ The KPTP is a licensure and program requirement.

APPENDIX P

School of Education Undergraduate Department Attendance Policy

MWF Classes: The following is a policy for MWF (or three-days-per-week) classes and will be a policy that the entire department will use and will put on each syllabus:

The School of Education is committed to preparing “confident and competent educational leaders.” In preparation for being a professional, it is important that you attend each class session. One “sick day” is allowed without affecting your grade. Any absence beyond the one sick day will result in grade reductions. Two percent (2%) will be deducted for each absence for the second and third absence. For every subsequent absence, an additional 4% will be deducted from the final grade.

Number of Absences	Total percentage deducted from final grade
1	0%
2	2%
3	4%
4	8%
5	12%
6	16% *
7	20%
8 or more	an additional 4% deduction per absence

*** Passing the course is unlikely at this point.**

TR Classes: The following is a policy for TR (or two-days-per-week) classes and will be a policy that the entire department will use and will put on each syllabus:

The School of Education is committed to preparing “confident and competent educational leaders.” In preparation for being a professional, it is important that you attend each class session. One “sick day” is allowed without affecting your grade. Any absence beyond the one sick day will result in grade reductions. Three percent (3%) will be deducted for each absence for the second and third absence. For every subsequent absence, an additional 5% will be deducted from the final grade.

Number of Absences	Total percentage deducted from final grade
1	0%
2	3%
3	6%
4	11%
5	16% *
6	21%
7	26%
8 or more	an additional 5% deduction per absence

*** Passing the course is unlikely at this point.**

Weekly Classes (1-2 hours a week): The following is a policy for weekly (or one-day-per-week) classes and will be a policy that the entire department will use and will put on each syllabus:

The School of Education is committed to preparing “confident and competent educational leaders.” In preparation for being a professional, it is important that you attend each class session. One “sick day” is allowed without affecting your grade. Any absence beyond the one sick day will result in grade reductions. Four percent (4%) will be deducted for each absence for the second and third absence. For every subsequent absence, an additional 6% will be deducted from the final grade.

Number of Absences	Total percentage deducted from final grade
1	0%
2	4%
3	8%
4	14%*
5	20%
6	26%
7	32%
8 or more	an additional 6% deduction per absence

*** Passing the course is unlikely at this point.**

Weekly Classes (3 hours a week): The following is a policy for weekly (or one-day-per-week) classes and will be a policy that the entire department will use and will put on each syllabus:

The School of Education is committed to preparing confident and competent educational leaders. In preparation for being a professional, it is important that you attend each class session. This class meets one night a week for 3 hours. Consequently, one “sick day”, consisting of one week of class is allowed without affecting your grade. Any absence beyond the one “sick day” will result in grade reductions. Six percent (6%) will be deducted from the final grade for each absence beyond the first.

If you have a serious health issue, please talk to me privately.

Number of Absences	Total Percentage deducted from final grade
1	0%
2	6%
3	12%
4	18%*
5 or more	an additional 6% deduction per absence

*** Passing the course is unlikely at this point.**

Plan to be in class on time, as you would expect to do in meeting your job commitments. Absences will not affect due dates for assignments. Please arrange for your assignments to be in on time whether or not you are physically present in class on a due date. An assignment turned in after the due date will be considered late and will be docked 10 percentage points for each 1-24 hours it is late. Tests must be taken on the scheduled date. Any conflict must be cleared with the instructor prior to test time.

The Baker University School of Education is committed to learning and to developing confident and competent educational leaders.



FREQUENTLY ASKED QUESTIONS

1. Can I finish in four years?

Most programs can be finished in four years.

2. What courses will I have to take?

The Teacher Education Policies and Programs Handbook (TEPPH) is designed to give you an accurate listing of the required courses as well as the other requirements for your particular program.

3. When may I start? Do I have to wait to be admitted into the Undergraduate School of Education (U-SOE) Teacher Education Program?

We feel we are in the student growth and development business. As a result all candidates are allowed to start our program immediately by enrolling in ED 100 Teaching as a Career. All are welcome to apply for admission by meeting entry-level expectations but only those who meet the incremental requirements of the program will finish and be recommended for a teaching license. These requirements are outlined in the TEPPH.

4. What are the distinguishing components of your program?

The Baker Teacher Education Program is based on a long-standing tradition of integrating the theoretical with the practical with early classroom placement. In the 1950s, Baker teacher candidates began enhancing their understanding of how to teach by observing and aiding in schools. This tradition continues today with a minimum of 200 practicum hours required of all candidates before student teaching.

Also, all U-SOE faculty consciously attempt to model appropriate teaching strategies that we hope our candidates will use when they have their own classrooms and students.

5. I am a transfer student. What about me?

Transfer students are welcome in Baker University's teacher education program. The Licensure Officer and faculty members will work closely with you to individually analyze your past coursework and plan your future classes to help you meet your goal of becoming a teacher.

6. I already have a degree but I now want to be a teacher. Is this possible at Baker?

Many non-traditional students have earned their teaching licenses with the U-SOE. The Licensure Officer and a department faculty member will work closely with you to individually analyze your past coursework and plan your future classes to help you meet your goal of becoming a teacher.

7. Is the Baker Teacher Education Program accredited?

All Baker SOE programs are accredited by the National Council for Accreditation of Teacher Education (NCATE) and the Kansas State Department of Education (KSDE).

APPENDIX R
BAKER UNIVERSITY UNDERGRADUATE SCHOOL OF EDUCATION
FELONY DISCLOSURE FORM

The Kansas State Department of Education (KSDE) requires a background clearance before they will issue *any* teaching license. It's "good" if you have nothing on your record. We want to talk about possible solutions to the "bad" situations for those students with criminal records or diversions in their past. And we want to warn you against the "ugly" situation that would happen if you lied on a licensure application...

Criminal history questions on licensure applications vary from state to state, and should be read carefully and **answered honestly**.

As you read these questions, note that alcohol is not indicated above, so you do not have to report alcohol-related incidents like an MIP (minor in possession), MIC (minor in consumption) or misdemeanor DUI due to alcohol. If any of these appear as your only charge/conviction, you can answer all questions "no." (Be aware that in other states, like MO, alcohol crimes may impact licensure, and some school districts may consider alcohol crimes for student teachers and employees.) A DUI for Drugs or a felony DUI should be reported! **If you are unsure, WHEN IN DOUBT, REPORT IT!** Every year, a few new teachers have to do this, so you're not alone! **(If you answer "yes" to any question, you'll need to contact your Licensure Officer to get a hardcopy Form 1 application** so you can attach certified copies of court documents.)

If you:

- **assume or have been told your diversion took the crime off your record – IT DOES NOT.**
- **are "not sure" whether you had something expunged, YOU DID NOT.**
- **assume you don't have to report it because you were a juvenile – YOU MUST REPORT IT.**
- **"forget" your past record and you don't reveal it, this is considered dishonesty and creates another issue with KSDE who will aggressively review your case. DO NOT LIE.**

If you receive a letter from the KSDE Office of General Counsel:

- **follow all directions carefully and submit all documents they request.** KSDE cannot provide you with advice or help you obtain those documents;
- you will need to contact the Clerk of the Court to obtain documents related to your case:
 - for Convictions-
 - obtain certified copies of the charging documents (complaint or citation/ticket); and
 - obtain certified copies of the journal entry of conviction.
 - for Diversions-
 - obtain certified copies of the charging documents, and
 - certified copy of the diversion agreement; and
 - certified copy of the journal entry of dismissal.
- **you may be instructed to appear before the Professional Practices Commission** (a KSDE committee of working teachers, KSDE and Higher Education representatives); and
- any decision from the Professional Practices Commission will go before the State Board of Education for final action.
- *just because you may have had an emergency sub license approved does not guarantee a teaching license will be!*

Advice about getting a record expunged:

- it's a fairly simple process that may not require a lawyer;
- can take a 4-6 weeks to complete;
- start by contacting the court (county or municipal) where the conviction/diversion occurred OR look for the paperwork on the court website;
- check to make sure of the time required for an expungement to be completed;
- if it can be completed well before you apply for a license, **DO IT NOW**;
- if it cannot be completed before you apply, **REPORT IT** on your license application;
- **an expungement can benefit you in more ways than just your license application!**

If your crime happened in Lawrence Municipal Court, like some other courts, they have made it easy to request expungement: go online for the forms and instructions. There is no charge (no lawyer or court fees involved). In other courts, the typical cost would be \$100-200, or with more serious cases, you might need to hire a lawyer.

***PLEASE NOTE: Question 8c refers to ALL diversions EVER entered – including juvenile diversions.** Also, KSDE is discussing a possible change from "theft" to "dishonesty", which is a broader term that could include things like falsifying academic records or getting caught with a fake ID. We are monitoring this situation and will revise this document if necessary.

Remember, too, that KSDE can revoke or suspend your license for a variety of reasons, including breach of employment contract. **Be sure to read the Kansas Educator Code of Conduct too! Some states also have a Code of Ethics. Check it out!**

The School of Education (SOE) at Baker University has the responsibility for placing candidates in school-based field experiences and for recommending candidates for teacher licensure. The SOE takes its responsibility seriously and requires that each student fill out a Felony Disclosure Form prior to placement in the schools for any unsupervised field experience or other SOE-sanctioned activity in which a candidate participates with school students. Baker University's School of Education is also responsible for recommending to the Kansas State Department of Education (KSDE) individuals who have completed the teacher education program for licensure as a teacher. However, the Kansas State Department of Education reserves the right to deny a license to individuals who have been convicted of or pleaded guilty to any act punishable as a felony.

The following questions were taken from the KSDE Initial License application. You should answer honestly; dishonest answers could result in the denial of a teaching license from KSDE. If an affirmative answer is given to the background questions below, applications or classroom field experience will be placed on hold until additional information is provided to the VP/Dean of the School of Education. Students will be asked to meet with the VP/Dean to determine their status for continuance in the teacher education program. It is the student's obligation to notify the VP/Dean if a change to one of the following questions occurs. Here are the current KSDE questions:

1. Have you ever been convicted of a felony?
No _____ Yes _____ If yes, attach a copy of the court documents regarding conviction.

2. Have you ever been convicted of ANY crime involving theft, drugs, or a child?
No _____ Yes _____ If yes, attach a copy of the court documents regarding conviction.

3. Have you entered into a criminal diversion agreement after being charged with any offense described in questions 1 and/or 2 above?
No _____ Yes _____ If yes, attach a copy of the diversion agreement.

4. Are criminal charges pending against you in any state involving any of the offenses described in questions 1 and/or 2 above?
No _____ Yes _____ If yes, attach a copy of the court documents regarding case.

5. Have you had a teacher's or school administrator's certificate or license denied, suspended, revoked, or been the subject of other disciplinary action in any state?
No _____ Yes _____ If yes, circle the action taken: denied, suspended, or revoked.
Which state(s) _____ . Attach a copy of the documents regarding the official action taken.

6. Have you ever been disbarred or had a professional license or state issued certificate denied, suspended, revoked or been the subject of other disciplinary action regarding any profession in Kansas or any other state?
No _____ Yes _____ If yes, circle the action taken: denied, suspended, or revoked.
Which state(s) _____ . Attach a copy of the documents regarding the official action taken.

7. Is disciplinary action pending against you in any state regarding a teacher's or administrator's certificate or license?
No _____ Yes _____ If yes, attach a copy of the official documents regarding the action pending against you.

8. Have you ever been terminated, suspended, or otherwise disciplined by a local Board of Education for falsifying or altering student tests or student test scores?
No _____ Yes _____

9. Have you ever falsified or altered assessment data, documents, or test score reports required for licensure?
No _____ Yes _____

Signature

Course number and name

Printed Name

Date

(Revised 03/14)

APPENDIX S
**ADMISSION TO THE
TEACHER EDUCATION PROGRAM**

The Baker University School of Education is committed to learning and to developing confident and competent educational leaders.

Gateways Leading to Licensure

- 1 - Career Exploration
- 2 - Admission to USOE
- 3 - Candidate Teaching
- 4 - Program Completion
- 5 - Initial Licensure

Gateway 1

Career Exploration

During Career Exploration, you must complete the following:

- ✓ Confirmation of ACT composite minimum score of 19 or higher (SAT also accepted)
- ✓ Confirmation of a Cum GPA of 2.8 or above
- ✓ Successfully complete ED 100 with a grade of C or above
- ✓ Successfully complete ED 243 with a grade of C or above

Transfer Candidates: Exceptions may be made for transfer candidates.

Gateway 2

Admission to USOE requires:

- ✓ Scores of 235 on all required sections of the C-BASE or passing scores on all sections of the Core or PPST or qualified for an exemption (ACT score of 26 or above or SAT score of 1170 or above)
- ✓ A grade of "C" or above in ED 244, ED 264, ED 265, ED 309, CO 115, PY 111, and PY 243
- ✓ An overall cumulative GPA of 2.8 or above
- ✓ A content area and professional GPA of 2.8 or above
- ✓ A composite average of 3.0 or above on the Personal and Professional Skills Survey
- ✓ A composite average of 3.0 or above on Professional Development School practica evaluations

Transfer Candidates: Exceptions may be made for transfer candidates.

Gateway 3
Admission to Student Teaching requires:

- ✓ A grade of "C" or above in all licensure content area courses
- ✓ A grade of "C" or above in all professional education courses
- ✓ An overall cumulative GPA of 2.8 or above
- ✓ A combined content area and professional GPA of 2.8 or above
- ✓ A composite average of 3.5 or above on the Personal and Professional Skills Survey
- ✓ A composite average of 3.5 or above on Professional Development School practicum evaluations
- ✓ Approval from the Council for Undergraduate Teacher Education
- ✓ Submission of Community Service paper
- ✓ Completion and presentation of Developmental Portfolio
- ✓ Verification of at least 15 hours of credit from Baker University (3 hours must be an upper level Professional Education course)
- ✓ Application to the Professional Semester (Student Teaching)
- ✓ Verification the candidate has no grades of Incomplete in the Professional and Content Courses

Transfer Candidates: Exceptions may be made for transfer candidates.

Gateway 4
Program Completion requires:

- ✓ A grade of "C" or above in student teaching
- ✓ A score of 20 or above on the KPTP
- ✓ An overall cumulative GPA of 2.8 or above
- ✓ A combined content area and professional GPA of 2.8 or above

Gateway 5
Initial Licensure:

- ✓ A Bachelor's degree posted on the candidate's transcript
- ✓ A score of 20 or above on the KPTP
- ✓ An overall cumulative GPA of 2.8 or above
- ✓ A combined content area and professional GPA of 2.8 or above
- ✓ Successful completion of the Praxis II Content Area Assessment
- ✓ Successful completion of the Praxis II Principles of Learning and Teaching Assessment (PLT)

APPENDIX T
Kansas Licensure Standards for Professional Education

***** Learner(s) is defined as children including those with disabilities or exceptionalities, who are gifted, and students who represent diversity based on ethnicity, race, socioeconomic status, gender, language, religion, and geographic origin.**

Standard 1: Learner Development. The teacher understands how learners grow and develop, recognizing that patterns of learning and development vary individually within and across the cognitive, linguistic, social, emotional, and physical areas, and designs and implements developmentally appropriate, relevant, and rigorous learning experiences.

Function 1: The teacher understands how learners grow and develop.

Content Knowledge (CK):

1.1.1CK The teacher understands how learning occurs-- how learners construct knowledge, acquire skills, and develop disciplined thinking processes.

1.1.2CK The teacher understands the role of language and culture in learning.

Professional Skills (PS):

1.1.3PS The teacher collaborates with families, communities, colleagues, and other professionals to promote learner growth and development.

1.1.4PS The teacher identifies readiness for learning, and understands how development in any one area may affect performance in others.

Function 2: The teacher recognizes that patterns of learning and development vary individually within and across the cognitive, linguistic, social, emotional, and physical areas.

Content Knowledge (CK):

1.2.1CK The teacher understands that each learner's cognitive, linguistic, social, emotional, and physical development influences learning.

Professional Skills (PS):

1.2.2PS The teacher creates developmentally appropriate instruction that takes into account individual learners' strengths, interests, and needs and enables each learner to advance his/her learning.

Function 3: The teacher designs and implements developmentally appropriate, relevant, and rigorous learning experiences.

Content Knowledge (CK):

1.3.1CK The teacher knows how to use instructional strategies that promote student learning.

1.3.2CK The teacher knows how to make instructional decisions that build on learners' strengths and needs.

Professional Skills (PS):

1.3.3PS The teacher regularly assesses individual and group performance in order to design and modify instruction to meet learners' needs in each area of development (cognitive, linguistic, social, emotional, and physical) and scaffolds to the next level of development.

1.3.4PS The teacher modifies instruction to make language comprehensible and instruction accessible, relevant, and rigorous.

Standard 2: Learning Differences. The teacher uses understanding of differences in individuals, cultures, and communities to ensure inclusive learning environments that enable each learner to meet rigorous standards.	
Function 1: The teacher uses an understanding of differences in individuals, cultures, and communities to ensure inclusive learning environments.	
Content Knowledge (CK):	Professional Skills (PS):
<p>2.1.1CK The teacher understands students with exceptional needs, including those associated with disabilities and giftedness, and knows how to use strategies and resources to address these needs.</p> <p>2.1.2CK The teacher knows about second language acquisition processes and knows how to incorporate instructional strategies and resources to support language acquisition.</p> <p>2.1.3CK The teacher understands that learners bring assets for learning based on their individual experiences, abilities, talents, prior learning, and peer and social group interactions, as well as language, culture, family, and community values.</p>	<p>2.1.4PS The teacher uses strategies and accesses resources, including specialized assistance and services to meet particular learning differences or needs.</p> <p>2.1.5PS The teacher incorporates tools of language development into planning and instruction, including strategies for making content accessible to English language learners and for evaluating and supporting their development of English proficiency.</p> <p>2.1.6PS The teacher brings multiple perspectives to the discussion of content, including attention to learner’s personal, family, and community experiences and cultural norms.</p>
Function 2: The teacher uses an understanding of differences in individuals, cultures, and communities to enable each learner to meet rigorous standards.	
Content Knowledge (CK):	Professional Skills (PS):
<p>2.2.1CK The teacher understands and identifies differences in appropriate approaches to learning and performance and knows how to design instruction that uses each learner’s strengths to promote growth.</p> <p>2.2.2CK The teacher knows how to access information about the values of diverse cultures and communities and how to incorporate each learner’s experiences, cultures, and community into instruction.</p>	<p>2.2.3PS The teacher designs, adapts, and delivers instruction to address each student’s diverse learning strengths and needs and creates opportunities for students to demonstrate their learning in multiple ways.</p> <p>2.2.4PS The teacher makes appropriate and timely provisions (e.g., pacing for individual rates of growth, task demands, communication, assessment, and response modes) for individual students with particular learning differences or needs.</p> <p>2.2.5PS The teacher designs instruction to activate prior knowledge and experiences, allowing learners to accelerate as they demonstrate their understandings.</p>

Standard 3: Learning Environment. The teacher works with others to create environments that support individual and collaborative learning, includes teacher and student use of technology, and encourages positive social interaction, active engagement in learning, and self-motivation.	
Function 1: The teacher works with others to create environments that support individual and collaborative learning.	
Content Knowledge (CK):	Professional Skills (PS):
3.1.1CK The teacher knows how to help learners work productively and cooperatively with each other to achieve learning goals.	3.1.3PS The teacher manages the learning environment to actively engage all learners appropriately by organizing, allocating, and coordinating the resources of time, space and learner’s attention.
3.1.2CK The teacher knows how to collaborate with learners to establish and monitor elements of a safe and productive learning environment including norms, expectations, routines and organizational structures.	3.1.4PS The teacher uses a variety of methods to engage learners by evaluating the learning environment and by observing and collaborating with learners to make appropriate adjustments.
Function 2: The teacher works with others to create environments that include teacher and student use of technology.	
Content Knowledge (CK):	Professional Skills (PS):
3.2.1CK The teacher understands digital citizenship, knows safe and appropriate technology tools for teachers and students, and their effective use in classrooms.	3.2.2PS The teacher works collaboratively with technology leaders to promote responsible learner use of interactive technologies to extend the possibilities for learning locally and globally.
	3.2.3PS The teacher intentionally builds learner capacity to collaborate through applying effective academic activities and discussions in virtual and classroom environments.
Function 3: The teacher works with others to encourage positive social interaction, active engagement in learning, and self-motivation.	
Content Knowledge (CK):	Professional Skills (PS):
3.3.1CK The teacher understands the relationship between motivation and engagement and knows how to design learning experiences using strategies that build learner self-governance, self-direction, and ownership of learning.	3.3.2PS The teacher collaborates with learners, families and colleagues to build a safe, positive learning climate of openness, mutual respect, support and inquiry.
	3.3.3PS The teacher develops learning experiences that engage learners in collaboration, self-governance, self-directed learning and that extend learner interaction with ideas and people locally and globally.
	3.3.4PS The teacher collaborates with learners and colleagues to develop shared values and expectations for respectful interactions, rigorous academic discussions, and individual and group responsibility for quality work.
	3.3.5PS The teacher communicates verbally and nonverbally in ways that demonstrate respect for and responsiveness to the diverse backgrounds and differing perspectives learners bring to the learning environment.

<p>Standard 4: Content Knowledge. The teacher understands the central concepts, tools of inquiry, and structures of the discipline(s) he or she teaches and creates content-specific learning and literacy experiences that make the discipline accessible and relevant to assure mastery of the content.</p>	
<p>Function 1: The teacher understands the central concepts, tools of inquiry, and structures of the discipline(s) he or she teaches.</p>	
<p>Content Knowledge (CK):</p>	<p>Professional Skills (PS):</p>
<p>4.1.1CK The teacher understands major concepts, assumptions, debates, the process of inquiry, and ways of knowing that are central to the discipline(s) s/he teaches.</p> <p>4.1.2CK The teacher understands common misconceptions that occur in learning the discipline and how to guide learners to accurate conceptual understanding.</p> <p>4.1.3CK The teacher has a deep knowledge of Kansas College and Career Ready Standards and their learning progressions for the discipline(s) s/he teaches.</p>	<p>4.1.4PS The teacher effectively uses multiple representations and explanations that capture key ideas in the discipline, guide learners through learning progressions, and promote each learner's achievement of content standards.</p> <p>4.1.5PS The teacher evaluates and modifies instructional resources and curriculum materials for their comprehensiveness, accuracy for representing particular concepts in the discipline and appropriateness for his/her learners.</p> <p>4.1.6PS The teacher uses supplementary resources and technologies effectively to ensure accessibility, rigor, and relevance for all learners.</p>
<p>Function 2: The teacher creates learning experiences that make the discipline accessible and relevant for learners to assure mastery of the content and provides opportunities for literacy experiences across content areas.</p>	
<p>Content Knowledge (CK):</p>	<p>Professional Skills (PS):</p>
<p>4.2.1CK The teacher knows and uses the academic language of the discipline and knows how to make it accessible, relevant, and rigorous.</p> <p>4.2.2CK The teacher knows how to integrate culturally relevant content to build on learners' background knowledge.</p>	<p>4.2.3PS The teacher engages students in learning experiences in the discipline(s) that encourage learners to understand, question, and analyze ideas from diverse perspectives so that they master the content.</p> <p>4.2.4PS The teacher engages learners in applying methods of inquiry and standards of evidence used in the discipline.</p> <p>4.2.5PS The teacher stimulates learner reflection on prior content knowledge, links new concepts to familiar concepts, and makes connections to learners' experiences.</p> <p>4.2.6PS The teacher recognizes learner misconceptions in a discipline that interfere with learning and creates experiences to build accurate conceptual understanding.</p> <p>4.2.7PS The teacher creates opportunities for students to learn, practice, and master academic language in their content.</p> <p>4.2.8PS The teacher accesses school and/or district based resources to evaluate the learner's content knowledge in their primary language.</p>

Standard 5: Application of Content. The teacher understands how to engage learners through interdisciplinary lessons that utilize concept based teaching and authentic learning experiences to engage students in effective communication and collaboration, and in critical and creative thinking.

Function 1: The teacher engages learners through the creation of interdisciplinary lessons and facilitates the examination of issues from multiple perspectives through varied communication modes.

Content Knowledge (CK):	Professional Skills (PS):
<p>5.1.1CK The teacher understands how cross-curricular themes interlace and provide an in-depth learning experience.</p> <p>5.1.2CK The teacher understands varied communication methods are used as vehicles for gaining and expressing learning, and for gaining an understanding of and expressing multiple perspectives.</p>	<p>5.1.3PS Using content specific pedagogy, the teacher creates interdisciplinary lessons connecting content themes and literacy.</p> <p>5.1.4PS The teacher develops learners' communication skills by creating interdisciplinary learning opportunities requiring the employment of varied forms of communication tailored to given audiences and purposes.</p> <p>5.1.5PS The teacher facilitates learning opportunities that require examination of issues from multiple perspectives, expanding understanding of local and global issues.</p>

Function 2: The teacher facilitates learning opportunities involving critical and creative thinking.

Content Knowledge (CK):	Professional Skills (PS):
<p>5.2.1CK The teacher understands thinking processes which lead to creative and critical analysis.</p> <p>5.2.2CK The teacher understands the role of high level questioning to promote independent thinking.</p>	<p>5.2.3PS The teacher facilitates innovative learning experiences that require creative and critical analysis.</p> <p>5.2.4PS The teacher engages learners through experiences requiring analysis of complex issues resulting in inventive solutions through original thinking.</p> <p>5.2.5PS The teacher engages learners in questioning and challenging assumptions and processes to foster innovative thinking and problem solving.</p>

Function 3: Through concept-based teaching, the teacher incorporates learning opportunities that involve solving authentic, real world problems independently and collaboratively.

Content Knowledge (CK):	Professional Skills (PS):
<p>5.3.1CK The teacher understands the concepts that govern his/her content area.</p> <p>5.3.2CK The teacher understands how concept based teaching leads to conceptual and philosophical understandings.</p> <p>5.3.3CK The teacher understands the role information literacy skills play in understanding issues and solving problems independently and collaboratively.</p>	<p>5.3.4PS The teacher creates concept-based lessons, which facilitate conceptual and philosophical understandings.</p> <p>5.3.5PS The teacher facilitates the application of conceptual and philosophical understandings to the resolution of local and global issues.</p> <p>5.3.6PS Through the use of varied technologies and resources, the teacher facilitates the acquisition and application of that knowledge to solve real world problems.</p>

Standard 6: Assessment. The teacher understands how to use multiple measures to monitor and assess individual student learning, engage learners in self-assessment, and use data to make decisions.	
Function 1: The teacher understands how to use multiple measures to monitor and assess individual student learning.	
Content Knowledge (CK):	Professional Skills (PS):
<p>6.1.1CK The teacher understands the difference between formative and summative assessment.</p> <p>6.1.2CK The teacher understands the multiple methods of assessment and how to select assessments based that are both reliable and valid based on the specific learning goals and learner needs.</p> <p>6.1.3CK The teacher understands the role of feedback in learner achievement and can supply feedback in a variety of communication modes.</p>	<p>6.1.4PS The teacher designs assessment plans with a balance between formative and summative assessments.</p> <p>6.1.5PS The teacher designs assessments aligned with the learning goals, utilizing multiple measures that maintain validity and reliability.</p> <p>6.1.6PS The teacher differentiates assessments and assessment environments based on learner needs.</p> <p>6.1.7PS The teacher provides effective feedback and shares this with learners in a variety of communication modes.</p>
Function 2: The teacher understands how to engage learners in self-assessment.	
Content Knowledge (CK):	Professional Skills (PS):
<p>6.2.1CK The teacher knows when to engage learners in analyzing their own assessment results.</p> <p>6.2.2CK The teacher knows how and when to engage learners in setting goals for future achievement.</p> <p>6.2.3CK The teacher knows how to prepare learners for assessments.</p>	<p>6.2.4PS The teacher engages learners in analyzing their own assessment data.</p> <p>6.2.5PS The teacher guides learners through a process of analyzing their own thinking and learning, resulting in goal setting using data.</p> <p>6.2.6PS The teacher engages learners in the assessment process through appropriate feedback utilizing technology and other communication modes.</p>
Function 3: The teacher understands how to make informed decisions.	
Content Knowledge (CK):	Professional Skills (PS):
<p>6.3.1CK The teachers knows how to analyze and report assessment data to understand patterns and gaps in learning based on given learning goals.</p> <p>6.3.2CK The teacher knows how to use data to guide planning and instruction.</p> <p>6.3.3CK The teacher knows how to provide relevant feedback to all learners.</p>	<p>6.3.4PS The teacher works independently and collaboratively to examine test and other performance data to understand patterns and gaps in learning based on given learning goals.</p> <p>6.3.5PS The teacher works independently and collaboratively to examine test and other performance data to understand each learner’s differentiated needs and to guide planning and instruction accordingly.</p> <p>6.3.6PS The teacher communicates feedback from assessments to assist students in making relevant decision.</p>

Standard 7: Planning for Instruction. The teacher plans instruction that supports every student in meeting rigorous learning goals by drawing upon knowledge of content areas, technology, curriculum, cross-disciplinary skills, and pedagogy, as well as knowledge of learners and the community context.	
Function 1: The teacher plans instruction that supports every student in meeting rigorous learning goals.	
Content Knowledge (CK):	Professional Skills (PS):
<p>7.1.1CK The teacher knows a range of evidence-based instructional strategies, resources, and technological tools and how to use them effectively to plan instruction that meets diverse learning needs.</p> <p>7.1.2CK The teacher knows when and how to adjust plans based on assessment information and learner responses.</p>	<p>7.1.3PS The teacher develops and evaluates plans in relation to short- and long-range goals.</p> <p>7.1.4PS The teacher systematically adjusts plans to enhance each student's learning.</p>
Function 2: The teacher plans instruction by drawing upon knowledge of content areas, technology, curriculum, cross-disciplinary skills, and pedagogy.	
Content Knowledge (CK):	Professional Skills (PS):
<p>7.2.1CK The teacher understands content and content standards and how these are organized in the curriculum.</p> <p>7.2.2CK The teacher understands how integrating cross- disciplinary skills in instruction engages learners in applying content knowledge in relevant ways.</p> <p>7.2.3CK The teacher knows when and how to access multiple types of resources and collaborate with others to support student learning (e.g., special educators, related service providers, language learner specialists, librarians, media specialists, community organizations).</p>	<p>7.2.4PS The teacher individually and collaboratively selects and creates learning experiences that are appropriate for curriculum goals and content standards, and are relevant to learners.</p> <p>7.2.5PS The teacher plans collaboratively with professionals who have specialized expertise (e.g., special educators, related service providers, language learning specialists, librarians, media specialists) to design and jointly deliver, as appropriate, learning experiences to meet unique learning needs.</p>
Function 3: The teacher plans instruction based on knowledge of learners and the community context.	
Content Knowledge (CK):	Professional Skills (PS):
<p>7.3.1CK The teacher understands learning theory, human development, cultural diversity, community context, and individual differences and how these impact ongoing planning.</p> <p>7.3.2CK The teacher understands the strengths and needs of individual learners and how to plan instruction that is responsive to these strengths and needs.</p>	<p>7.3.3PS The teacher plans how to achieve each student's learning goals, choosing appropriate strategies and accommodations, resources, and materials to differentiate instruction for individuals and groups of learners.</p> <p>7.3.4PS The teacher develops appropriate sequencing of learning experiences and provides multiple ways to demonstrate knowledge and skill.</p> <p>7.3.5PS The teacher plans for instruction based on formative, informative, and summative assessment data, prior learner knowledge, and learner interest.</p>

<p>Standard 8: Instructional Strategies. The teacher understands and uses a variety of instructional strategies to encourage learners to develop deep understanding of content areas and their connections, and to build skills to apply knowledge in relevant ways.</p>	
<p>Function 1: The teacher understands and uses a variety of instructional strategies to encourage learners to develop deep understanding of content areas and their connections.</p>	
<p>Content Knowledge (CK):</p>	<p>Professional Skills (PS):</p>
<p>8.1.1CK The teacher understands the cognitive processes associated with various kinds of learning (e.g., critical and creative thinking, problem framing and problem solving, invention, memorization and recall) and how these processes can be stimulated.</p> <p>8.1.2CK The teacher knows how to apply a range of developmentally, culturally, and linguistically appropriate instructional strategies to achieve learning goals.</p> <p>8.1.3CK The teacher knows when and how to use appropriate strategies to differentiate instruction and engage all learners in complex thinking and meaningful tasks.</p> <p>8.1.4CK The teacher understands how content and skill development can be supported by media and technology and knows how to evaluate these resources for rigor, quality, accuracy, and effectiveness.</p>	<p>8.1.5PS The teacher uses appropriate strategies and resources to differentiate instruction to meet the needs of individuals and groups of learners.</p> <p>8.1.6PS The teacher continuously monitors student learning, engages learners in assessing their progress and setting goals, and adjusts instruction in response to student learning needs.</p> <p>8.1.7PS The teacher collaborates with learners to design and implement relevant and rigorous learning experiences, identify their strengths, and access family and community resources to develop their areas of interest.</p> <p>8.1.8PS The teacher varies his/her role in the instructional process (e.g., instructor, facilitator, coach, co-teacher, audience) in relation to the content and purposes of instruction and the needs of learners.</p> <p>8.1.9PS The teacher engages all learners in developing higher order questioning skills and the metacognitive processes.</p> <p>8.1.10PS The teacher asks questions to stimulate discussion that serves different purposes (e.g., probing for learner understanding, helping learners articulate their ideas and thinking processes, stimulating curiosity, and helping learners to question).</p>
<p>Function 2: The teacher understands and uses a variety of instructional strategies to encourage learners to build skills to apply knowledge in relevant ways.</p>	
<p>Content Knowledge (CK):</p>	<p>Professional Skills (PS):</p>
<p>8.2.1CK The teacher understands how multiple forms of communication (oral, written, nonverbal, digital, visual) convey ideas, foster self expression, and build relationships.</p> <p>8.2.2CK The teacher knows how to use a wide variety of resources, including human and technological, to engage students in learning.</p>	<p>8.2.3PS The teacher provides multiple models and representations of concepts and skills with opportunities for learners to demonstrate their knowledge through a variety of products and performances.</p> <p>8.2.4PS The teacher engages learners in using a range of learning skills and technology tools to access, interpret, evaluate, and apply information.</p> <p>8.2.5PS The teacher uses a variety of instructional strategies to support and expand learners' communication through speaking, listening, reading, writing, visual representation, and viewing.</p>

<p>Standard 9: Professional Learning and Ethical Practice. The teacher engages in ongoing professional learning and uses evidence to continually evaluate his/her practice, particularly the effects of his/her choices and actions on others (learners, families, other professionals, and the community), and adapts practice to meet the needs of each learner.</p>	
<p>Function 1: The teacher engages in ongoing professional learning.</p>	
<p>Content Knowledge (CK):</p>	<p>Professional Skills (PS):</p>
<p>9.1.1CK The teacher understands the laws related to learner rights and teacher responsibilities (educational equity, appropriate education for learners with disabilities, confidentiality, privacy, appropriate treatment of learners, and reporting situations related to possible child abuse).</p> <p>9.1.2CK The teacher understands ethical practice, and upholds the Kansas Educator Code of Conduct focused on the best interests of their students, and responsibilities to the student(s) and families, the district, and the profession.</p>	<p>9.1.3PS The teacher advocates, models, and teaches safe, legal, and ethical use of information and technology including appropriate documentation of sources and respect for others in using social media.</p>
<p>Function 2: The teacher uses evidence to continually evaluate his/her practice, particularly the effects of his/her choices and actions on others (learners, families, other professionals, and the community), and adapts practice to meet the needs of each learner.</p>	
<p>Content Knowledge (CK):</p>	<p>Professional Skills (PS):</p>
<p>9.2.1CK The teacher understands the role and goals of reflection in professional growth.</p> <p>9.2.2CK The teacher understands how the elements of the evaluation protocol corresponds with professional learning experiences or opportunities.</p>	<p>9.2.3PS The teacher effectively uses student data, self assessment, teaching evaluations/observations, school and district goals, and problem solving strategies to analyze and reflect on his/her practice related to all stakeholders, and to plan for professional growth.</p>

<p>Standard 10: Leadership and Collaboration. The teacher seeks appropriate leadership roles and opportunities to take responsibility for student learning, to collaborate with learners, families, colleagues, other school professionals, support staff, and community members to ensure learner growth, and to advance the profession.</p>	
<p>Function 1: The teacher seeks appropriate leadership roles and opportunities to take responsibility for student learning.</p>	
<p>Content Knowledge (CK):</p>	<p>Professional Skills (PS):</p>
<p>10.1.1CK The teacher understands schools as organizations within a historical, cultural, political, and social context and knows how to work with others across the system to support learners.</p>	<p>10.1.2PS The teacher is able to incorporate multiple measures of student learning with a clear focus on improving teacher practice.</p> <p>10.2.3PS The teacher is an active participant in professional learning communities, recognizing that all teachers share responsibility for student success.</p>
<p>Function 2: The teacher seeks appropriate leadership roles and opportunities to collaborate with learners, families, colleagues, other school professionals, and community members to ensure learner growth.</p>	
<p>Content Knowledge (CK):</p>	<p>Professional Skills (PS):</p>
<p>10.2.1CK The teacher understands the importance of the multiple roles of teachers with regards to the diversity of learners, families, colleagues, other school professionals, and community members and interacts with each appropriately in planning, instructing, collaborating, mentoring, learning, leading, etc.</p> <p>10.2.2CK The teacher knows how to collaborate with families, colleagues, other school professionals, and community members to contribute to a common culture that supports high expectations for student learning.</p>	<p>10.2.3PS The teacher welcomes families; participates in regular two-way, meaningful communication; supports student successes; advocates for every child; shares power with the families and professionals involved with each individual student; and collaborates with appropriate school and community resources (PTA.org, n. d.).</p> <p>10.2.4PS The teacher provides information to families about the instructional programs, each individual student's progress, and ways that they can be engaged in learning activities (Danielson, 2013).</p> <p>10.2.5PS The teacher works with colleagues in a leadership role to examine teacher practice and student data to plan and jointly meet the needs of learners.</p> <p>10.2.6PS The teacher engages collaboratively in the school-wide effort to build a shared vision and supportive culture, to identify common goals, and monitor and evaluate progress toward those goals.</p>

APPENDIX U

Glossary of Terms

Accreditation	A process for assessing and enhancing academic and educational quality through voluntary peer review
Adjunct Faculty	Faculty and administrative positions at a college or university that are not permanent positions at the academic institution
Automatic Drop	Students may be dropped from the Teacher Education Program under certain circumstances.
Candidates	Individuals admitted to, or enrolled in, programs for the initial preparation of teachers. Candidates are distinguished from <i>students</i> in P-12 schools. (NCATE)
C-BASE	College Base Academic Subject Examination
Clinical Practice	Another name for the professional or student teaching semester
Conceptual Framework	An underlying structure in a professional education unit that gives conceptual meaning to the unit's operations through an articulated rationale and provides direction for programs, courses, teaching, candidate performance, faculty scholarship and service, and unit accountability. (NCATE)
Cooperating Teacher	The classroom teacher who works with the student teacher during the student teaching semester
CUTE	Council for Undergraduate Teacher Education
Curriculum	Courses, experiences, and assessments necessary to prepare candidates to teach or work with students at a specific age level and/or to teach a specific subject area (NCATE)
Dispositions	Professional attitudes, values, and beliefs demonstrated through both verbal and non-verbal behaviors as educators interact with students, families, colleagues, and communities. (NCATE)
Endorsement	The legend printed on each license that identifies the subject in which an individual has specialization (KSDE)
Ethnicity	Physical and cultural characteristics that make a social group distinctive. These may include, but are not limited to national origin, ancestry, language, shared history, traditions, values, and symbols--all of which contribute to a sense of distinctiveness among members of the group. (NCATE)

Ex officio	An ex officio member is a member of a body (a board, committee, council, etc.) who is part of it by virtue of holding another office.
Felony Disclosure	Revealing the history of having been involved in a crime termed a felony
INTASC	The Interstate New Teacher Assessment and Support Consortium, a project of the Council of Chief State School Officers (CCSSO) that has developed model performance-based standards and assessments for the licensure of teachers. (NCATE)
Interterm	January term offered at Baker between first and second semesters
KSDE	Kansas State Department of Education
Licensure	The official recognition by a state governmental agency that an individual has met certain qualifications specified by the state and is, therefore, approved to practice in an occupation as a professional. (NCATE) The granting of access to practice teaching, administration, or school services in Kansas public schools (KSDE)
Licensure Officer	The person in this position will work closely with the SOE Dean, the Undergraduate Department Chair, and the Kansas State Department of Education (KSDE) to monitor teacher licensure requirements, candidate progress toward licensure, and KSDE correspondence, rules and regulations pertaining to program licensure.
Orientation	As applied to ED 462 Education Orientation Internship, the process of becoming acquainted with the beginning procedures and activities of starting a new school year in a public school.
Pedagogical Content Knowledge	The interaction of the subject matter and effective teaching strategies to help students learn the subject matter. It requires a thorough understanding of the content to teach it in multiple ways, drawing on the cultural backgrounds and prior knowledge and experiences of students. (NCATE)
Pedagogical Knowledge	The general concepts, theories, and research about effective teaching, regardless of content areas (NCATE)
Pedagogy	The art, science, or profession of teaching
Portfolio	An accumulation of evidence about individual proficiencies (NCATE)
Practicum	The experience and application in a classroom of previously studied theory
Practitioner	One who practices a profession; a teacher with a license

Praxis	Tests by Educational Testing Service (ETS): The <i>Praxis I</i> Test (PPST) measures reading, writing and mathematical skills that colleges often require for entry into a teacher education program. The <i>Praxis II</i> Tests (PLT and Content Area Tests) measures subject knowledge and skills that are needed for teacher licensure in 39 states. (ETS)
Probationary	A Probationary candidate is a candidate who has not met all requirements for either Conditional or Good Standing status in the Teacher Education Program.
PDS	Professional Development School
Prorated Policies	The attendance policies are calculated according to a proportion of the policy for MWF classes.
Provisional	"Provisional teaching endorsement license" means a license issued to an individual that allows access to practice in an endorsement area while the individual is in the process of completing requirements for that endorsement. (KSDE)
Qualitatively	Involving qualities or characteristics
Quantitatively	Involving quantities or measurement of amounts
Quorum	The number, usually a majority, of members of a group needed to conduct business
Rubric	Assessment guide that reflects content and performance standards; an assessment rubric reflects what is important, defines what work meets a standard and distinguishes between different levels of performance
SOE	School of Education
GSOE	Graduate School of Education
USOE	Undergraduate School of Education
SPGS	School of Professional Graduate Studies
TEPPH	Teacher Education Policy and Programs Handbook
Tenure	A status granted after a trial period to a teacher protecting him/her from dismissal that is done without a formal process
UAC	University Academic Council

APPENDIX V

BIBLIOGRAPHY OF PEDAGOGICAL KNOWLEDGE BASE

The following bibliography provides support for the instructional strategies that are promoted and modeled by department faculty. In order to match the format of the Baker University School of Education's Recommended Strategies and Best Practices document, the advocated instructional strategy will be listed with supporting bibliographical material underneath.

Active participation/engaging the learner

Burgess, Dave. (2012). *Teach like a pirate increase student engagement, boost your creativity and transform your life as an educator*. Dave Burgess Consulting.

Gardner, H., & Hatch, T. (1989). *Multiple intelligences go to school: Educational implications of the theory of multiple intelligences*. [Electronic version]. *Educational Researcher*, 18(8), 4-9.

Johnson, D. W. & Johnson, R. T. (1987). *Learning together and alone*. Englewood Cliffs, NJ: Prentice Hall.

Kagan, S. (1989). *Cooperative learning: Resources for teachers*. San Juan Capistrano, CA: Published by Resources for Teachers.

Karr, I. (2002). *Busy, noisy, and powerfully effective: classroom learning tools for the college classroom*. (2nd ed.). Elyria, OH: INFO-TEC.

Kroll, L. & LaBoskey, V. (1996). *Practicing what we preach: Constructivism in a teacher education program*. Action in Teacher Education, 18 (2), 63-72

Marzano, J., Robert & Pickering, J., Debra. (2011). *The highly engaged classroom*. Marzano Research Laboratory.

Slavin, R. E. (1990). *Cooperative learning : Theory, research, and practice*. Englewood Cliffs, NJ: Prentice Hall.

Slavin, R. E. (1994). *A practical guide to cooperative learning*. Needham Heights, MA: Allyn and Bacon.

Slavin, R. E. (1995). *Cooperative learning* (2nd ed.). Needham Heights, MA: Allyn and Bacon.

Slavin, R. E. (2002). *Educational psychology : Theory and practice* (7th ed.). Boston, MA: Allyn and Bacon.

Staley, C. C. (2003). *50 ways to leave your lectern : Active learning strategies to engage first-year students*. Belmont, CA: Wadsworth/Thomson Learning.

Willingham, Daniel T. (2009). *Why Don't Students Like School?* Jossey-Bass.

Assessment, standardized grading, and standardized testing

Marzano, R. J. (2000). *Transforming classroom grading*. Alexandria, VA: Association for Supervision and Curriculum Development.

Popham, W. J. (2003). *What every teacher should know about educational assessment*. Boston, MA: Pearson Education.

Salvia, J. & Ysseldyke, J. (1991). *Assessment* (5th ed.). Boston, MA: Houghton Mifflin Co.

Wormeli, R. (2006). *Fair isn't always equal : Assessing & grading in the differentiated classroom*. Portland, ME: Stenhouse.

Classroom management

Charles, C. M. (2005). *Building classroom discipline* (8th ed.). Boston, MA: Pearson/A & B.

Curwin, R. & Mendler, A. (1999). *Discipline with dignity*. Alexandria, VA: Association for Supervision and Curriculum Development.

Emmer, E.T. & Evertson, C.M. (2013). *Classroom management for middle and high school teachers* (9th ed.). Upper Saddle River, NJ: Pearson Educ., Inc.

Emmer, E. T., Evertson, C. M., & Worsham, M. E. (2003). *Classroom management for secondary teachers* (6th ed.). Boston, MA: Allyn and Bacon.

Levin, J. & Nolan, J. (2003). *What every teacher should know about classroom management*. Boston, MA: Pearson Education.

Long, J. & Williams, R. (2005). *Making it till Friday : Your guide to successful classroom management* (5th ed.). Hightstown, NJ: Princeton Book Co.

Marzano, R. J. (2003). *Classroom management that works research-based strategies for every teacher*. Alexandria, VA: Association for Supervision and Curriculum Development.

Curriculum design

Wiggins, G. P. & McTighe, J. (2005). *Understanding by design*. Alexandria, VA: Association for Supervision and Curriculum Development.

Designing Lessons

Fisher, M. (2015). *Ditch The Daily Lesson Plan: How Do I Plan For Meaningful Student Learning*. Alexandria, VA: ASCD.

English language learners

Ariza, E. N. (2006). *Not for ESOL teachers: What every classroom teacher needs to know about the linguistically, culturally, and ethnically diverse student*. Boston, MA: Pearson/Allyn and Bacon.

Crawford, J., and Krashen, S. (2007). *English Learners in American Classrooms 101 Questions * 101 Answers*. New York, NY: Scholastic Inc.

Dolson, D. & Burnham-Massey, L. (2009). *Improving education for English learners: Research-based approaches*. Sacramento, CA: California Department of Education.

Echevarria, J., Vogt, M., & Short, D. (2010). *Making content comprehensible for English learners: The SIOP model*. (3rd ed.) Boston: Allyn & Bacon

Echevarria, J., Vogt, M., & Short, D. (2010). *Making content comprehensible for secondary English learners: The SIOP model*. Boston: Allyn & Bacon.

Faltis, C. (2006). *Teaching English language learners in elementary school communities: A jointfostering approach* (4th ed.). Upper Saddle River, NJ: Pearson/ Merrill/Prentice Hall.

Gay, G. (2000). *Culturally responsive teaching: Theory, research, and Practices*. New York: Teachers College Press.

Gibbons, P. (2002). *Scaffolding language, scaffolding learning: Teaching second language learners in the mainstream classroom*. Portsmouth, NH: Heinemann.

- Gregory, G. & Chapman, C. (2007). *Differentiated instructional strategies : One size doesn't fit all* (2nd ed.). Thousand Oaks, CA: Corwin Press.
- Herrell, A. & Jordan M. (2008). *Fifty strategies for teaching English language learners* (3rd ed.). Upper Saddle River, NJ: Pearson/Merrill Prentice Hall.
- Hill, J. & Flynn, K. (2006). *Classroom instruction that works with English language learners*. Alexandria, VA: Association for Supervision and Curriculum Development.
- Ovando, C., Combs, M., & Collier, V. (2006). *Bilingual and ESL classrooms : Teaching in multicultural contexts* (4th ed.). Boston, MA: McGraw-Hill.
- Reiss, J. (2008). *102 content strategies for English language learners : Teaching for academic success in grades 3-12*. Upper Saddle River, NJ: Pearson/Merrill/Prentice Hall.
- Rothenberg, C. & Fisher, D. (2007). *Teaching English language learners : A differentiated approach*. Upper Saddle River, NJ: Pearson/Merrill Prentice Hall.

High expectations

- Sadker, M. & Sadker, D. (1991). *Teachers, schools, and society* (2nd ed.). New York, NY: McGraw-Hill.

Higher level thinking

- Bloom, B. S. (1956). *Taxonomy of educational objectives; the classification of educational goals* (1st ed. ed.). New York, NY: Longmans, Green.
- Dewey, J. (1938). *Experience and education*. New York, NY: The Macmillan company.

Instructional strategies and outcomes

- Altieri, L., Jennifer. (2011). *Content counts! Developing disciplinary literacy skills, K-6*. International Reading Association.
- Beck, L., Isabel. (2006). *Making sense of phonics*. The Guilford Press.
- Blankstein, A. M. (2004). *Failure is not an option: 6 principles that guide student achievement in high-performing schools*. Thousand Oaks, CA: Corwin.

- Blevins, W. (1998). *Phonics from A to Z: A practical guide*. New York, NY: Scholastic Professional Books.
- Blevins, W. (2001a). *Building fluency: Lessons and strategies for reading success*. New York, NY: Scholastic.
- Blevins, W. (2001b). *Teaching phonics and words study in the intermediate grades*. New York, NY: Scholastic.
- Buehl, D. (2009). *Classroom strategies for interactive learning* (3rd ed.). Newark, DE: International Reading Association.
- Carin, A. & Bass, J. (2009). *Teaching science as inquiry* (10th ed.). Upper Saddle River, NJ: Merrill/Prentice-Hall.
- Danielson, C. (2007). *Enhancing professional practice: A framework for teaching* (2nd ed.). Alexandria, VA: Association for Supervision and Curriculum Development.
- Diller, Debbie. (2011). *Math work stations independent learning you can count on, K-2*. Stenhouse.
- Diller, Debbie. (2007). *Making the most of small groups. Differentiation for all*. Stenhouse.
- Diller, Debbie. (2008). *Designing for literacy; Spaces & Places*. Stenhouse.
- Gersten, Russell & Newman-Gonchar, Rebecca. (2011). *Understanding RTI in mathematics. Proven methods and applications*. Paul H. Brookes Publishing Co.
- Gregory, G & Chapman, C. (2007). *Differentiated instructional strategies: One size doesn't fit all* (2nd ed.). Thousand Oaks, CA: Corwin Press.
- Hohn, R. L. (1995). *Classroom learning & teaching*. White Plains, NY: Longman Publishers USA.
- Hunter, M. C. (1982). *Mastery teaching* (1st ed.). El Segundo, CA: TIP Publications.
- Jacobs, J. S. & Tunnell, M. O. (2004). *Children's literature, briefly*. Upper Saddle River, NJ: Pearson.
- Johns, J. & Lenski, S. (2001). *Improving reading: Strategies and resources* (3rd ed.). Dubuque, IA: Kendall/Hunt.

- Lemov, D. (2010). *Teach like a champion: 49 teaching techniques that put students on the path to college*. San Francisco: Jossey-Bass.
- Marzano, R. J. (2003). *What works in schools translating research into action*. Alexandria, VA: Association for Supervision and Curriculum Development.
- Marzano, R. J. (2004). *Building background knowledge for academic achievement research on what works in schools*. Alexandria, VA: Association for Supervision and Curriculum Development.
- Marzano, J., Robert & Carleton, Lindsay. (2010). *Vocabulary games for the classroom*. Marzano Research Laboratory.
- Marzano, R. J., Pickering, D., & Pollock, J. (2012) (2nd ed). *Classroom instruction that works: Research-based strategies for increasing student achievement*. Alexandria, VA: Association for Supervision and Curriculum Development.
- Maxim, G. (2003). *Dynamic social studies for elementary classrooms* (7th ed.). Upper Saddle River, NJ: Merrill.
- McLaughlin, M. & Allen, M. (2002). *Guided comprehension in action: Lessons for grades 3-8*. Newark, Del: International Reading Association.
- McLaughlin, Maureen & Overturf, J., Brenda. (2013). *The common core teaching K-5 students to meet the reading standards*. International Reading Association.
- McLaughlin, Maureen & Overturf, J., Brenda. (2013). *The common core teaching 6-12 students*
- Readance, J. E., Bean, T. W. & Baldwin, R. S. (2004). *Content area literacy: an integrated approach*. Dubuque, IA: Hendall/Hunt.
- Ryan, K. & Cooper, J. (1995). *Those who can, teach* (7th ed.). Boston, MA: Houghton Mifflin.
- Schmoker, M. J. (2006). *Results now: How we can achieve unprecedented improvements in teaching and learning*. Alexandria, VA: Association for Supervision and Curriculum Development.

- Tomlinson, C. A. & McTighe, J. (2006). *Integrating differentiated instruction & understanding by design: Connecting content and kids*. Alexandria, VA: Association for Supervision and Curriculum Development
- Van de Walle, J. A. (2013). *Elementary and middle school mathematics: Teaching developmentally* (8th ed.). Boston, MA: Pearson /Allyn and Bacon.
- Willis, Judy M.D. (2007). *Brain-Friendly Strategies for the Inclusion Classroom*. Alexandria, VA: Association for Supervision and Curriculum Development
- Wormeli, R. (2003). *Day one & beyond: Practical matters for new middle-level teachers*. Portland, ME: Stenhouse Publishers.

Leadership

- Andrews, A. (2002). *The traveler's gift*. Nashville, TN: Thomas Nelson Publishers.
- Arbinger Institute. (2002). *Leadership and self-deception: Getting out of the box*. San Francisco, CA: Berrett-Koehler.
- Barth, R. S. (1990). *Improving schools from within: Teachers, parents, and principals can make the difference* (1st ed.). San Francisco, CA: Jossey-Bass.
- Collins, J. (2001). *Good to great: why some companies make the leap....and others don't*. New York, NY: HarperCollins Publisher, Inc.
- Covey, S. R. (2004a). *The 7 habits of highly effective people: Restoring the character ethic*. New York, NY: Free Press.
- Covey, S. R. (2004b). *Stephen R. Covey live. the 8th habit from effectiveness to greatness*. United States: Better Life Media, Inc.
- Giuliani, R. W. (2002). *Leadership* (1st ed.). New York, NY: Hyperion.
- Glickman, C. D. (2002). *Leadership for learning how to help teachers succeed*. Alexandria, VA: Association for Supervision and Curriculum Development.

- Heifetz, R. A. (1994). *Leadership without easy answers*. Cambridge, MA: Belknap Press of Harvard University Press.
- Marzano, R. J., Waters, T., & McNulty, B. (2005). *School leadership that works: From research to results*. Alexandria, VA; Aurora, Col: Association for Supervision and Curriculum Development; Mid-continent Research for Education and Learning.
- McNally, D. (1994). *Even eagles need a push: Learning to soar in a changing world*. New York, NY: Dell Pub.
- Phillips, D. T. (1992). *Lincoln on leadership: Executive strategies for tough times*. New York, NY: Warner Books.
- Schlechty, P. C. (2005). *Creating great schools: Six critical systems at the heart of educational innovation* (1st ed.). San Francisco, CA: Jossey-Bass.
- Wheatley, M. J. (1992). *Leadership and the new sciences*. San Francisco, CA: Berrett-Koehler Publishers Inc.

Learning communities

- Blankstein, A. M. (2004). *Failure is not an option: 6 principles that guide student achievement in high-performing schools*. Thousand Oaks, CA: Corwin.
- DuFour, R. & Eaker, R. E. (1998). *Professional learning communities at work: Best practices for enhancing student achievement*. Bloomington, IN; Alexandria, VA: National Education Service; ASCD.
- DuFour, R., Eaker, R. E., & DuFour, R. B. (2005). *On common ground: The power of professional learning communities*. Bloomington, IN: National Educational Service.
- Senge, P. M. (2000). *Schools that learn: A fifth discipline fieldbook for educators, parents, and everyone who cares about education* (1st Currency pbk. ed.). New York, NY: Doubleday.

Miscellaneous

Armstrong, D., Henson, K., & Savage, T. (2005). *Teaching today: An introduction to education* (7th ed.). Upper Saddle River, NJ: Merrill/Prentice Hall.

Bruner, J. S. (1966). *Toward a theory of instruction*. Cambridge, MA: Belknap Press of Harvard University.

Dalton, M. M. (2004). *The hollywood curriculum: Teachers in the movies* (Rev. ed.). New York, NY: P. Lang.

Dewey, J. (1916). *Democracy and education: An introduction to the philosophy of education*. New York, NY: Macmillan.

Eggen, P. & Kauchak, D. (2012). *Educational psychology: Windows on classrooms* (9th ed.). Upper Saddle River, NJ: Pearson.

Gardner, H. (1991). *The unschooled mind: how children think and how schools should teach*. New York, NY: Harper Collins Publishers, Inc.

Glasser, W. (1991). *The quality school: managing student without coercion* (2nd ed.). New York, NY: Harper and Row.

Goodlad, J. (1994). *What schools are for* (2nd ed.). Bloomington, IN: Phi Delta Kappa Educational Foundation.

Intrator, S. M. & Scribner, M. (2003). *Teaching with fire: Poetry that sustains the courage to teach* (1st ed.). San Francisco, CA: Jossey-Bass.

Kohl, H. R. (1984). *Growing minds: On becoming a teacher* (1st ed.). New York, NY: Harper & Row.

Wong, H. & Wong, R. (1998). *The first days of school: How to be an effective teacher* (2nd ed. ed.). Mountainview, CA: Harry K. Wong Publications.

Modeling

Bandura, A. (1986). *Social foundations of thought and action: A social cognitive theory*. Englewood Cliffs, NJ: Prentice-Hall.

Multicultural education/equity

- Banks, J. A., Banks, C., & McGee, A. (2004). *Handbook of research on multicultural education* (2nd ed.). San Francisco, CA: Jossey-Bass.
- Brown, S. & Kysilka, M. (2003). *What every teacher should know about multicultural and global education*. Boston, MA: Pearson Education.
- Delpit, L. D. (2002). *The skin that we speak: Thoughts on language and culture in the classroom*. New York, NY: New Press.
- Garbarino, J. (1999). *Lost boys: Why our sons turn violent and how we can save them*. New York, NY: Free Press.
- Gruwell, E. (1999). *The freedom writers diary: How a teacher and 150 teens used writing to change themselves and the world around them* (Movie tie-in ed.). New York, NY: Broadway Books.
- Kozol, J. (1991). *Savage Inequalities: children in America's schools*. New York, NY: Crown Publishers.
- Payne, R. K. (2015). *A framework for understanding poverty* (5th ed). Highlands, TX: Aha! Process.
- Peterson, E., Paul. (2010). *Saving schools from Horace mann to virtual learning*. Belknap Press of Harvard University.
- Sadker, M. & Sadker, D. (1995). *Failing at fairness: How our schools cheat girls* (1st Touchstone ed.). New York, NY: Touchstone.

Outcomes based education

- Spady, W. G. (1994). *Outcomes based education: critical issues and answers*. Arlington, VA: American Association of School Administrators.

Parent/community involvement

- Chrislip, D. & Larson, C. (1994). *Collaborative leadership: How citizens and civic leaders can make a difference* (1st ed.). San Francisco, CA: Jossey-Bass.

Good, T. & Brophy, J. (1973). *How parent-teacher conferences build partnerships*. Bloomington, IN: Phi Delta Kappa.

Physical Education and Health

Auxter, D., Pyfer, J., & Huetting, C. (2016). *Principles and Methods of Adapted Physical Education and Recreation* (11th ed.). McGraw-Hill.

Capel, S. & Brecken, P. (2016). *A Guide To Teaching Physical Education In The Secondary School*. Routledge.

Kamiya, A. (2016). *Great activities*. Retrieved from <https://greatactivitiesonline.com> .

Pangrazi, R. & Beighle, A. (2015). *Dynamic Physical Education for Elementary School Children* (18th ed.). Benjamin Cummins.

PE Central (2016). *What Works in Physical Education*. Retrieved from www.pecentral.org .

Research

Boyer, E. L. (1990). *Scholarship reconsidered: Priorities of the professoriate*. Princeton, NJ: Carnegie Foundation for the Advancement of Teaching.

Gall, J., Gall M., & Borg, W. (2005). *Applying educational research: a practical guide* (5th ed.). Boston, MA: Pearson Education, Inc.

Johnson, A. P. (2003). *What every teacher should know about action research*. Boston, MA: Pearson Education.

Marzano, R. J. (2003). *What works in schools translating research into action*. Alexandria, VA: Association for Supervision and Curriculum Development.

Salkind, N. J. (2007). *Statistics for people who (think they) hate statistics* (Excel ed.). Thousand Oaks, CA: SAGE Publications.

School improvement

- Danielson, C. (1996). *Enhancing professional practice: A framework for teaching*. Alexandria, VA: Association for Supervision and Curriculum Development.
- Danielson, C. (2002). *Enhancing student achievement: A framework for school improvement*. Alexandria, VA: Association for Supervision and Curriculum Development.
- Eaker, R. & Keating, J. (2010) *Every School, Every Team, Every Classroom: District Leadership for Growing Professional Learning Communities at Work*. Bloomington, IN: Solution Tree Press.
- Interstate New Teacher Assessment and Support Consortium. (1992). *Model standards for beginning teacher licensing, assessment, and development: A resource for state dialogue*. Washington, D.C.: Council of Chief State School Officers.
- Kansas State Board of Education. (2006). *Teaching standards for Kansas teachers*. Topeka, KS: Author.
- O'Shea, M. R. (2005). *From standards to success : A guide for school leaders*. Alexandria, VA: Association for Supervision and Curriculum Development.

Special needs

- Annual Editions (1999-2000 through 2006-2007). Educating Exceptional Children. Guilford, CT: McGraw Hill-Duskin.
- Berninger, Virginia W., and Beverly J. Wolf. (2009). *Teaching Students with Dyslexia and Dysgraphia Lessons from Teaching and Science*. Baltimore: Paul H. Brookes Publishing
- Birsh, Judith R. (2011). *Multisensory Teaching of Basic Language Skills*. (3rd ed). Baltimore: Paul H. Brookes Publishing.
- Colvin, Geoff. (2010). *Defusing Disruptive Behavior In The Classroom*. Thousand Oaks, CA: Corwin
- Colvin, Geoff. (2004). *Managing the Cycle of Acting-Out Behavior in the Classroom*. Behavior Associates.
- Dawson, Peg and Richard Guare. (2010). *Executive Skills in Children and Adolescents A Practical Guide to Assessment and Intervention*. (2nd ed). New York, NY: The Guilford Press
- Exceptional Parent. (2003). *Exceptional Parent 2003 Resource Guide*, 34 (1). Marion, OH: Psy-ED Corp.

- Fletcher, Jack M., B. Reid Lyon, Lynn S. Fuchs, and Marcia A. Barnes. (2007) *Learning Disabilities From Identification to Intervention*. New York, NY: The Guilford Press
- Hallahan, D. P. & Kauffman, J. M. (2003). *Exceptional learners : Introduction to special education* (9th ed.). Boston, MA: Allyn and Bacon.
- Kaufman, Christopher. (2010). *Executive Function in the Classroom Practical Strategies for Improving Performance and Enhancing Skills for All Students*. Baltimore: Paul H. Brookes Publishing
- Lane, Kathleen Lynne, Holly Mariah Menzies, Allison L. Bruhn, and Mary Crnabori. (2011). *Managing Challenging Behaviors in Schools*. New York, NY: The Guilford Press
- Lavoie, R. (1990). *Understanding learning disabilities: how difficult can this be?* [Video]. Alexandria, VA: PBS Video.
- Lavoie, R. (1994). *Learning disabilities and social skills: last one picked...first one picked on*. [Video]. Alexandria, VA: PBS Video.
- Levine, M. D. (2002). *A mind at a time*. New York, NY: Simon & Schuster.
- Mather, Nancy and Sam Goldstein. (2010). *Learning Disabilities and Challenging Behaviors*. (3rd ed). Baltimore: Paul H. Brookes Publishing.
- Mercer, C. & Mercer, A. (2005). *Teaching students with learner problems* (7th ed.). Upper Saddle River, NJ: Pearson Education, Inc.
- Moates, Louisa Cook. (2010). *Speech to Print Language Essentials for Teachers*. (2nd ed). Baltimore: Paul H. Brookes
- Orenstein, M. (2001). *Smart but stuck : Emotional aspects of learning disabilities and imprisoned intelligence* (Rev. ed.). New York, NY: Haworth Press.
- Pelzer, D. J. (1995). *A child called 'it'*. Health Communications.
- Pelzer, D. J. (1997). *The lost boy: A foster child's search for the love of a family..* Health Communications.

- Pelzer, D. J. (1999). *A man named Dave: A story of triumph and forgiveness*. New York, NY: A Plume Book of Penguin Putnam, Inc.
- Salend, S. J. (2005). *Creating inclusive classrooms : Effective and reflective practices for all students* (7th ed.). Upper Saddle River, NJ: Pearson/Merrill/Prentice Hall.
- Swanson, H. Lee, Karen R. Harris, and Steve Graham. (2003). *Handbook of Learning Disabilities*. New York, NY: The Guilford Press

Standards

- English language proficiency (ELP) standards*. 2013. Topeka: Kansas State Department of Education.
- Essex, N. L. (2006). *What every teacher should know about no child left behind*. Boston, MA: Pearson.
- National Council of Teachers of Mathematics. (1996). *Professional standards for teaching mathematics*. Virginia: NCTM.

Technology

- Johns Hopkins University Center for Technology in Education. (2006). *The Johns Hopkins University digital portfolio and guide*. Upper Saddle River, NJ: Pearson Education, Inc.
- Kilbane, C. & Milman, N. (2003a). *What every school leader should know about digital teaching portfolios*. Boston, MA: Pearson Education.
- Kilbane, C. & Milman, N. (2003b). *What every teacher should know about creating digital teaching portfolios*. Boston, MA: Pearson Education.
- November, A. (2001). *Empowering students with technology*. Arlington Heights, IL: Skylight Professional Development.
- Recesso, A. & Orrill, C. (2008). *Integrating technology into teaching*. Boston, MA: Houghton Mifflin.
- Richardson, Will. (2009). *Blogs, Wikis, Podcasts, and Other Powerful Web Tools for Classrooms*. (2nd ed.) Corwin Press.

